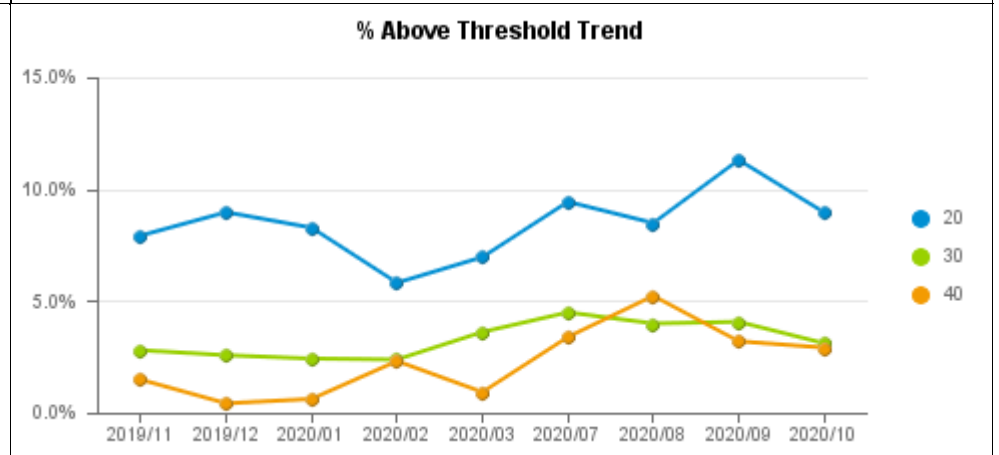
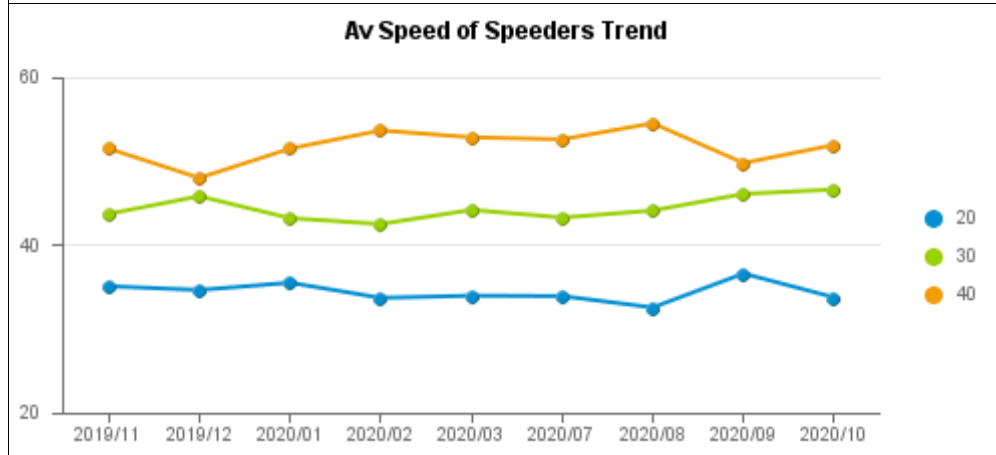
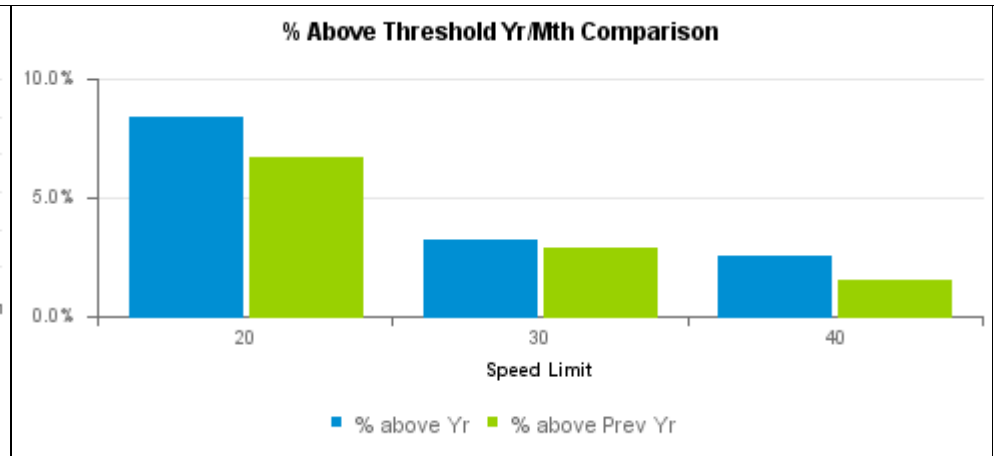
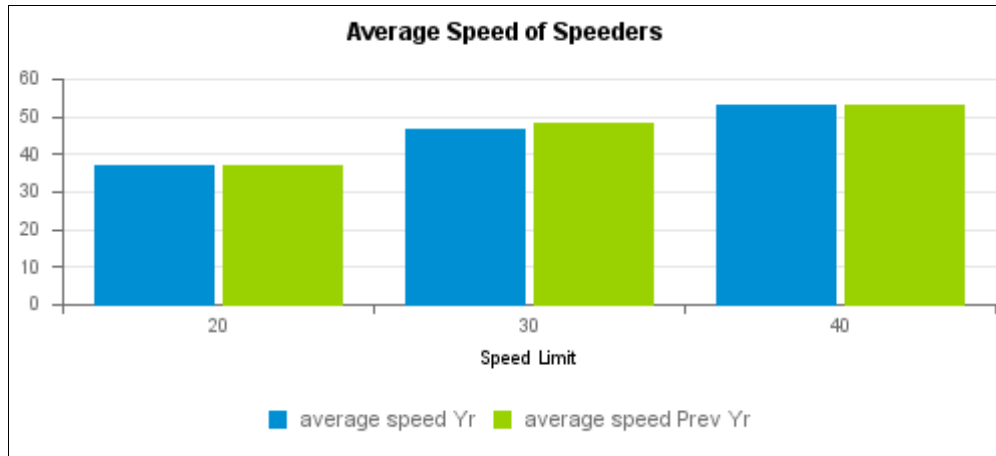


Community SpeedWatch Monthly Report Sessions up to October 2020

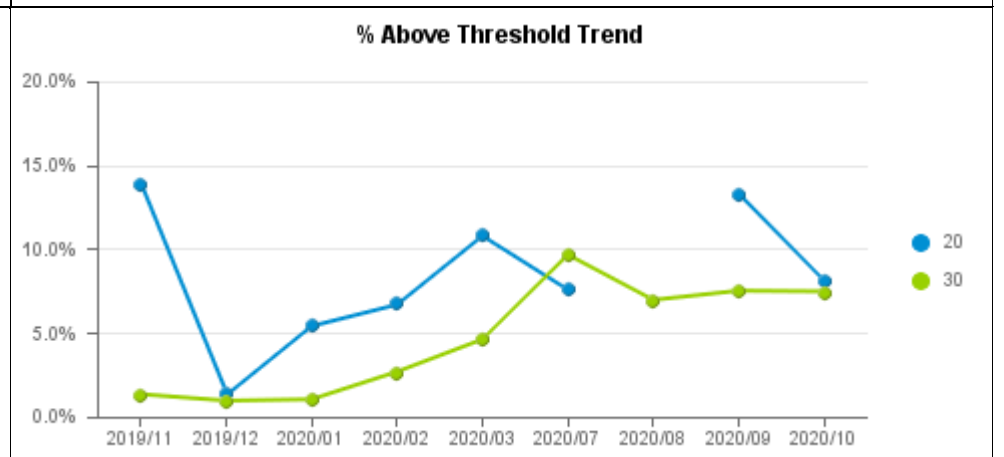
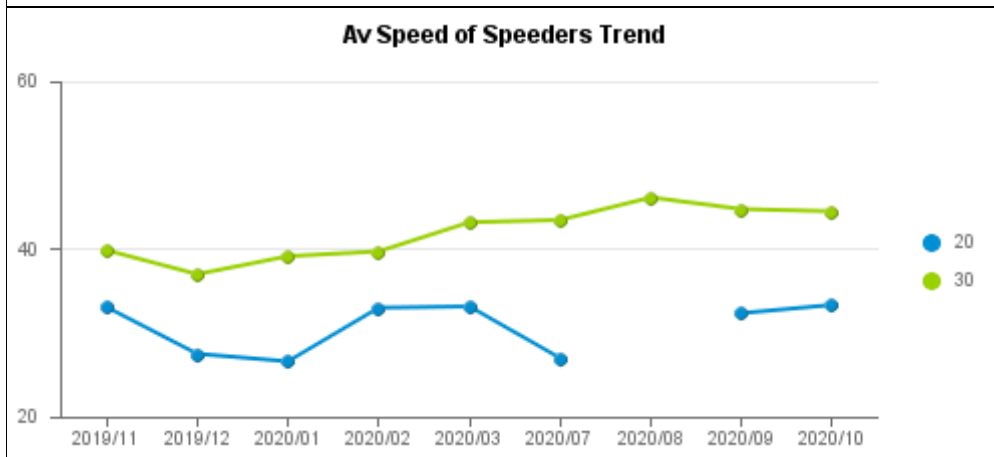
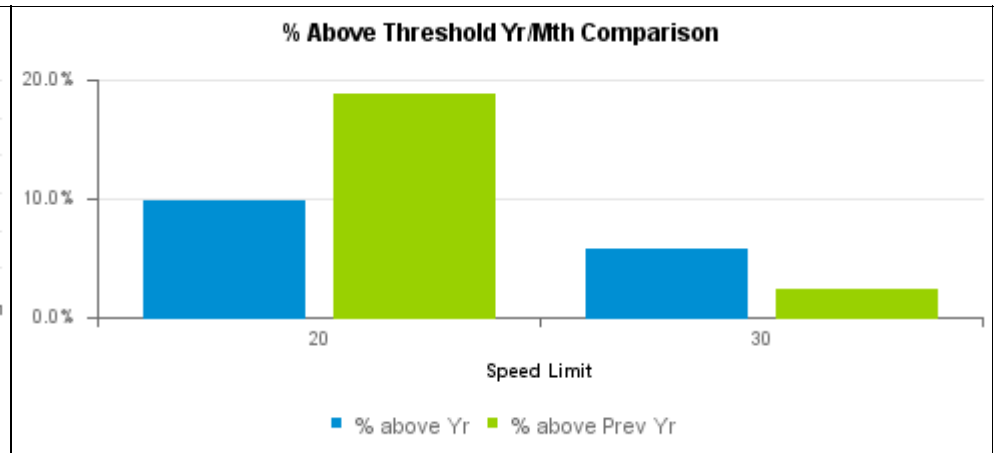
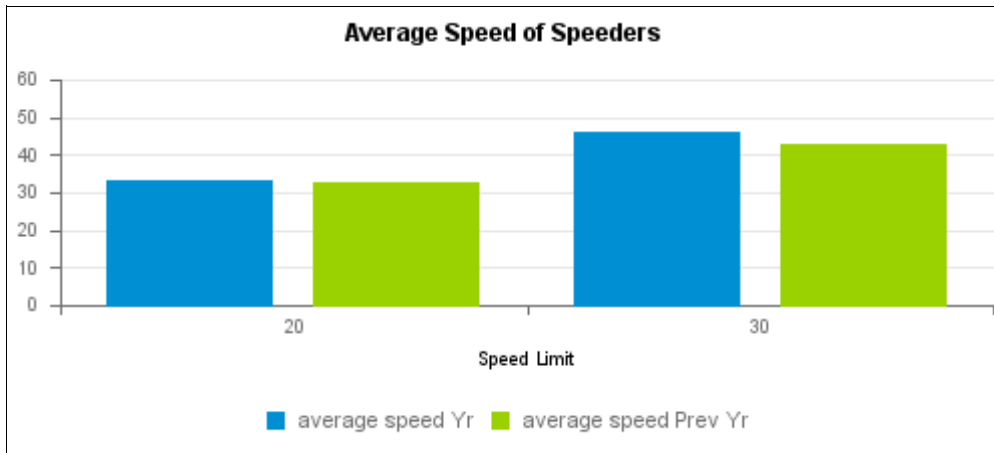
Force Level Summary															
Speed Limit	Sessions		Vehicles		Vehicles Above Threshold		% above threshold		Av Speed of speeders		Top Speed		Letters		
	Mon	Yr	Mon	Yr	Mon	Yr	Mon	Yr	Mon	Yr	Mon	Yr	Mon	NFA	In Processing
20	89	1,175	22,380	118,556	2,005	9,986	9.0%	8.4%	33.8	36.9	50	58	719	321	965
30	247	4,169	79,032	490,911	2,455	15,759	3.1%	3.2%	46.6	46.6	67	99	1,433	302	720
40	10	239	3,162	24,078	92	611	2.9%	2.5%	51.9	53.3	69	71	65	10	17
Total	346	5,583	104,574	633,545	4,539	26,356	4.3%	4.1%			69	99	2,217	633	1,702



Community SpeedWatch Monthly Report Sessions up to October 2020

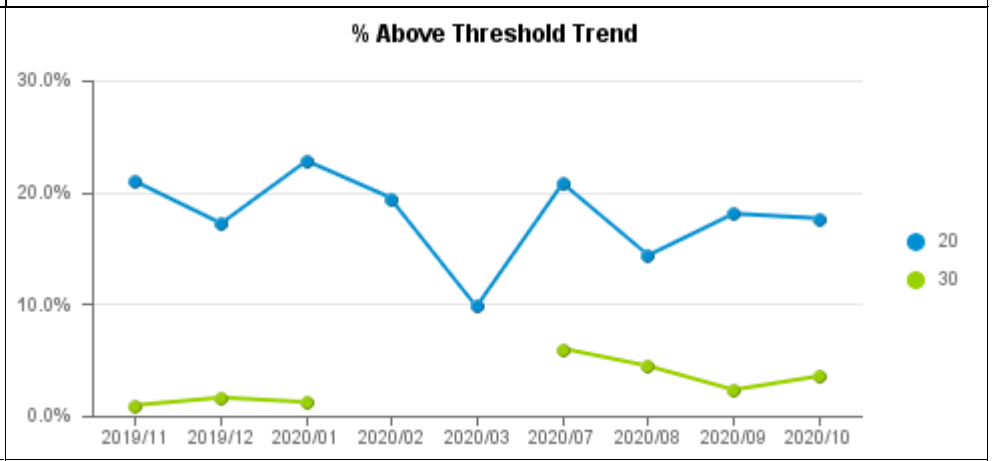
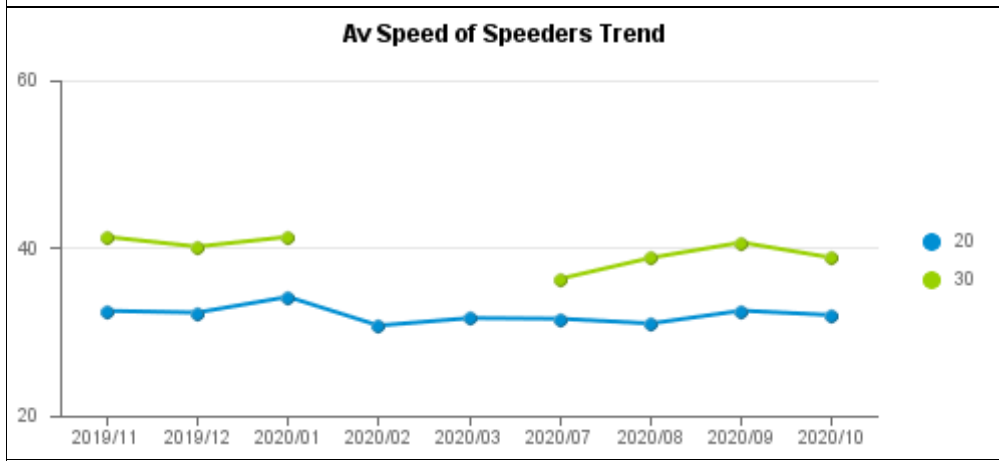
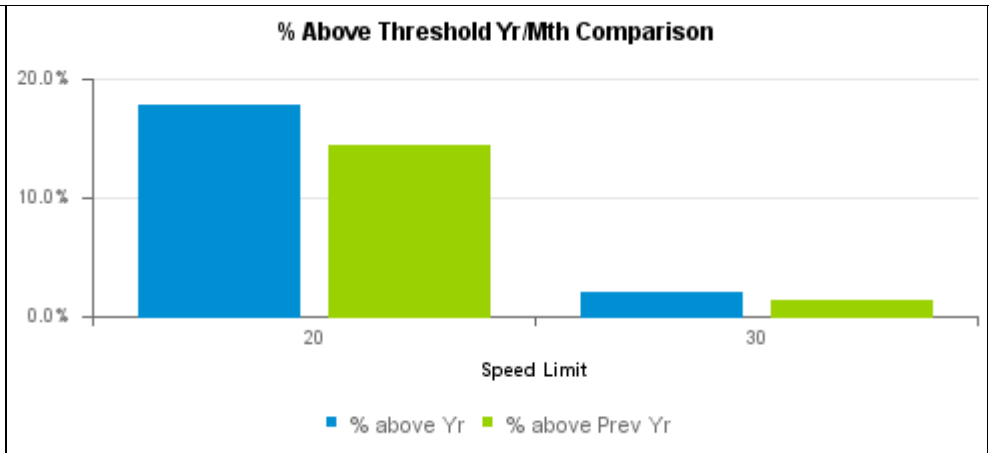
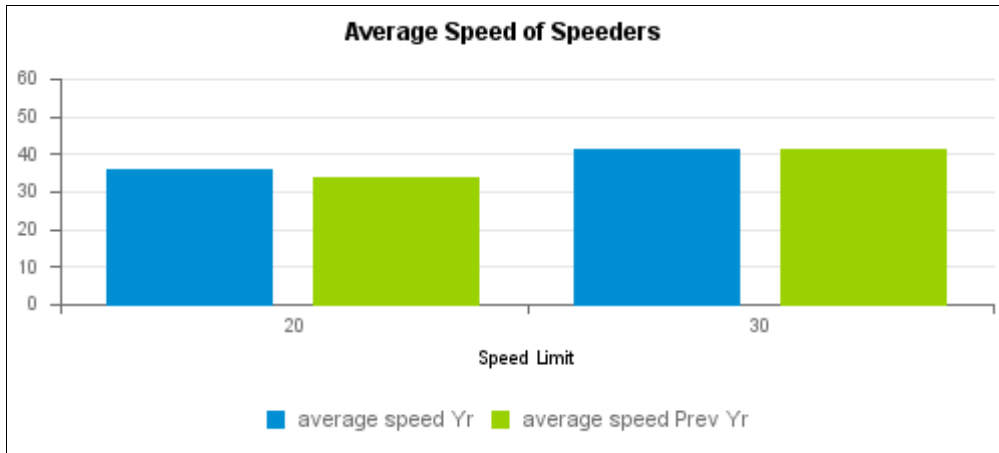
Bath & North East Somerset Summary

Speed Limit	Sessions		Vehicles		Vehicles Above Threshold		% above threshold		Av Speed of speeders		Top Speed		Letters		
	Mon	Yr	Mon	Yr	Mon	Yr	Mon	Yr	Mon	Yr	Mon	Yr	Mon	NFA	In Processing
20	9	44	1,330	3,963	108	389	8.1%	9.8%	33.3	33.4	44	44	59	27	22
30	14	104	3,959	21,715	296	1,238	7.5%	5.7%	44.5	46.2	53	63	259	9	28
Total	23	148	5,289	25,678	403	1,627	7.6%	6.3%			53	63	318	36	50



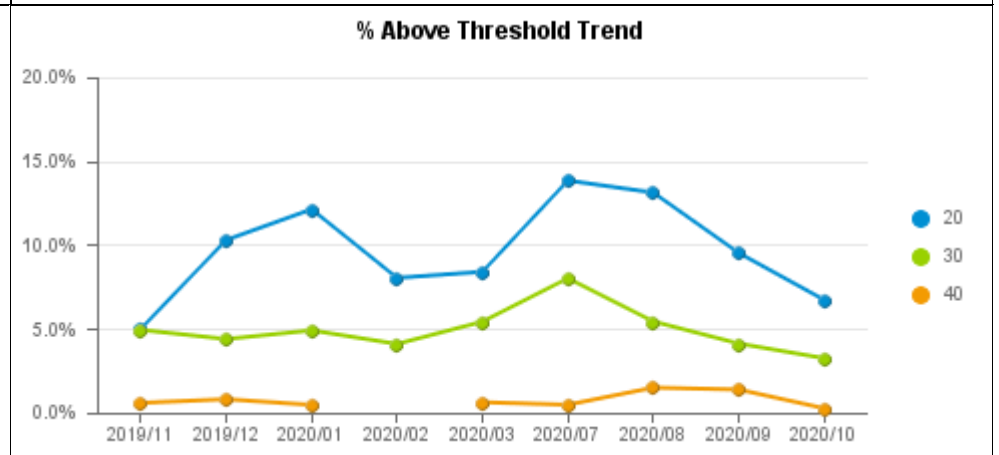
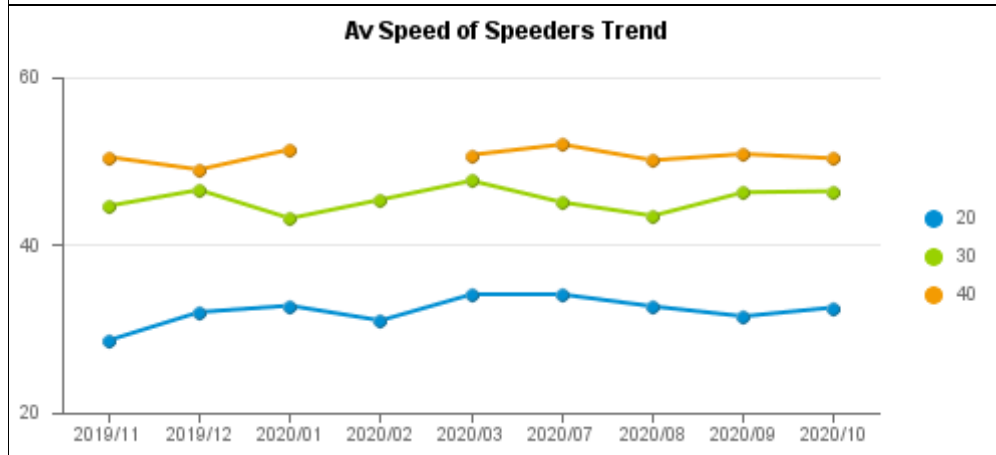
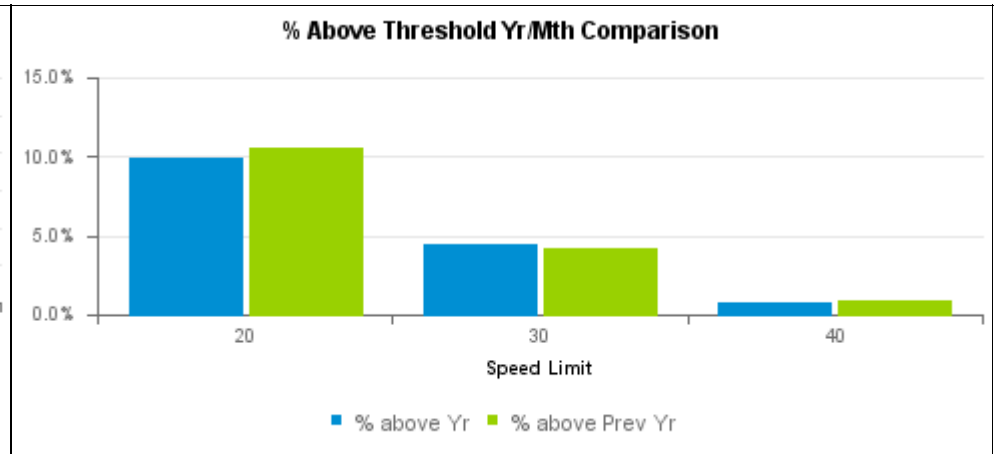
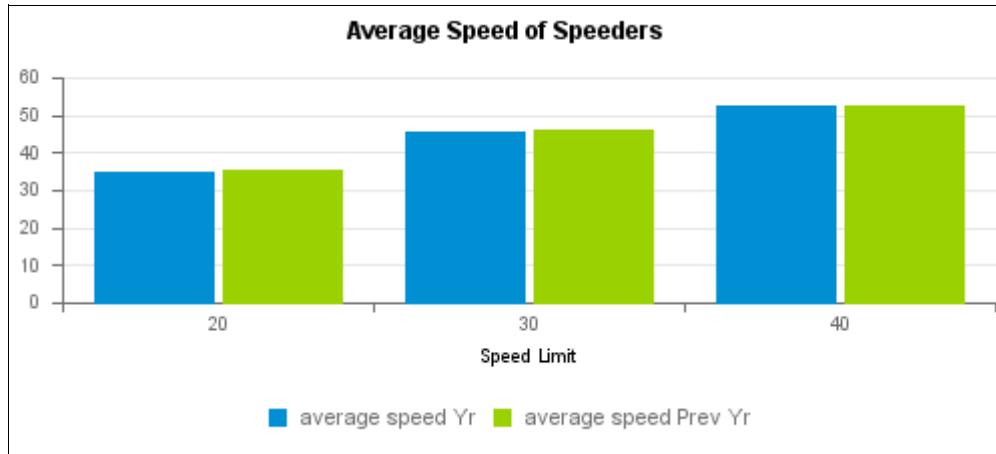
Community SpeedWatch Monthly Report Sessions up to October 2020

Bristol Summary																
Speed Limit	Sessions		Vehicles		Vehicles Above Threshold		% above threshold		Av Speed of speeders		Top Speed		Letters			
	Mon	Yr	Mon	Yr	Mon	Yr	Mon	Yr	Mon	Yr	Mon	Yr	Mon	NFA	In Processing	
20	6	147	725	8,265	128	1,473	17.7%	17.8%	32.0	35.9	41	58	70	18	40	
30	2	47	395	4,245	14	88	3.5%	2.1%	38.8	41.1	42	51	12	2	0	
Total	8	194	1,120	12,510	142	1,561	12.7%	12.5%			42	58	82	20	40	



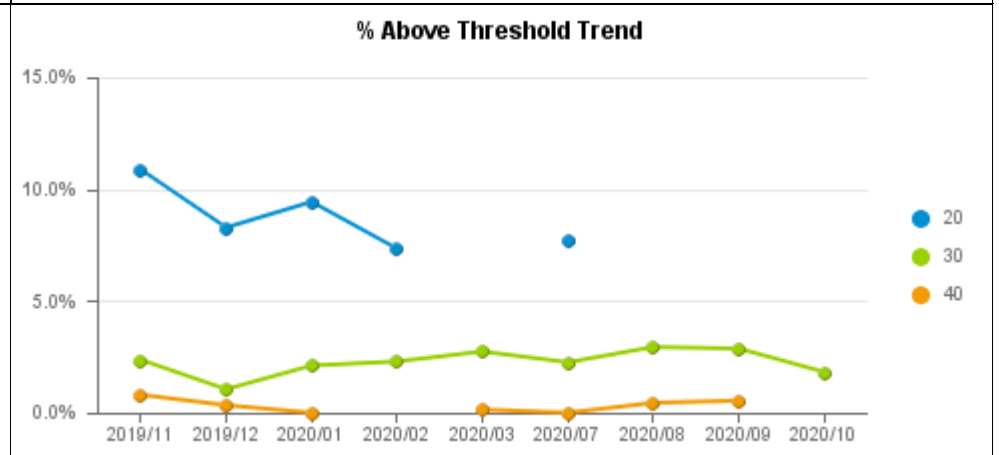
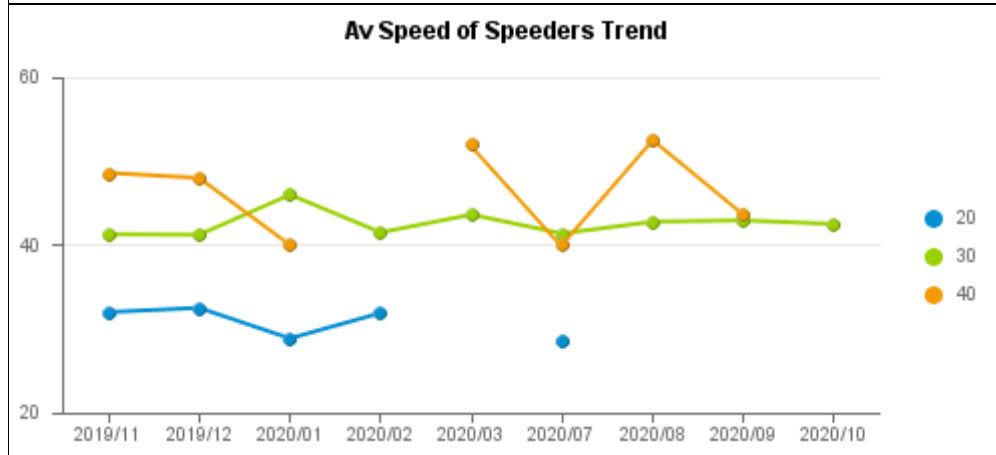
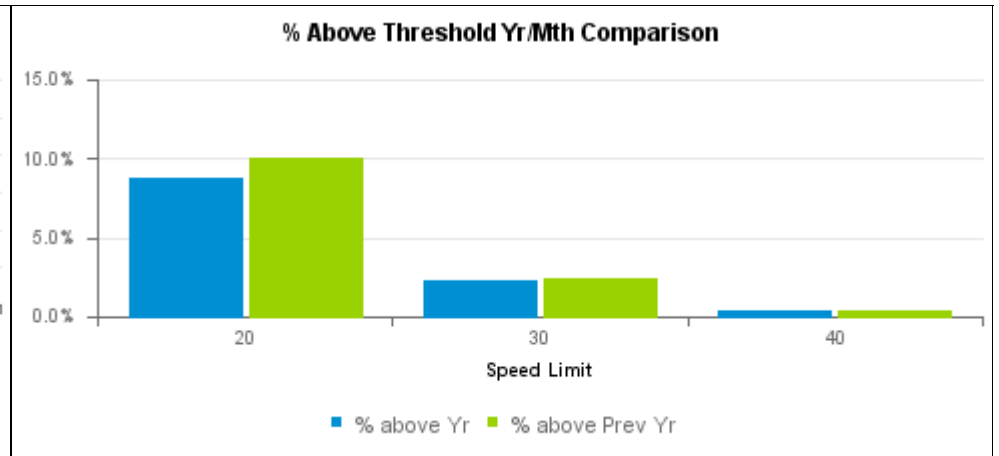
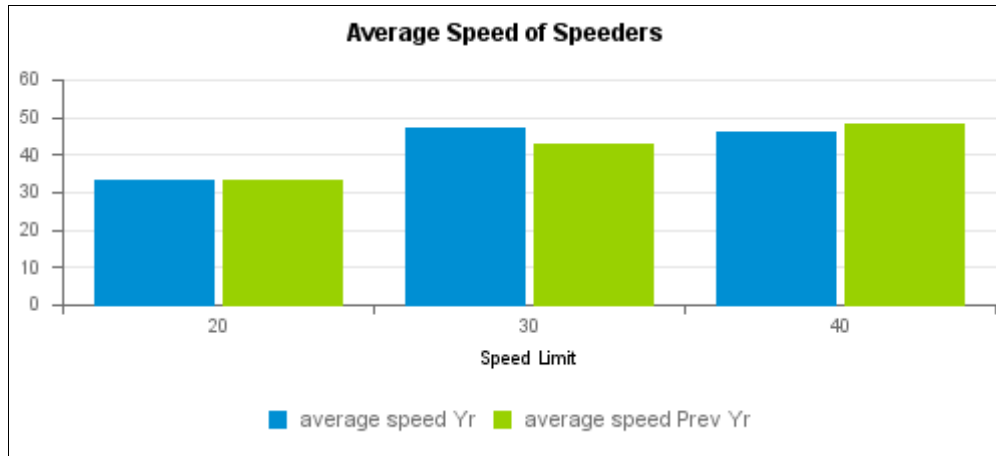
Community SpeedWatch Monthly Report Sessions up to October 2020

Mendip Summary															
Speed Limit	Sessions		Vehicles		Vehicles Above Threshold		% above threshold		Av Speed of speeders		Top Speed		Letters		
	Mon	Yr	Mon	Yr	Mon	Yr	Mon	Yr	Mon	Yr	Mon	Yr	Mon	NFA	In Processing
20	9	121	1,724	15,175	116	1,506	6.7%	9.9%	32.6	34.6	42	47	96	6	14
30	90	1,473	27,582	135,537	896	6,063	3.2%	4.5%	46.4	45.3	60	67	692	72	132
40	3	59	1,145	6,925	3	51	0.3%	0.7%	50.3	52.2	56	60	3	0	0
Total	102	1,653	30,451	157,637	1,010	7,620	3.3%	4.8%			60	67	791	78	146



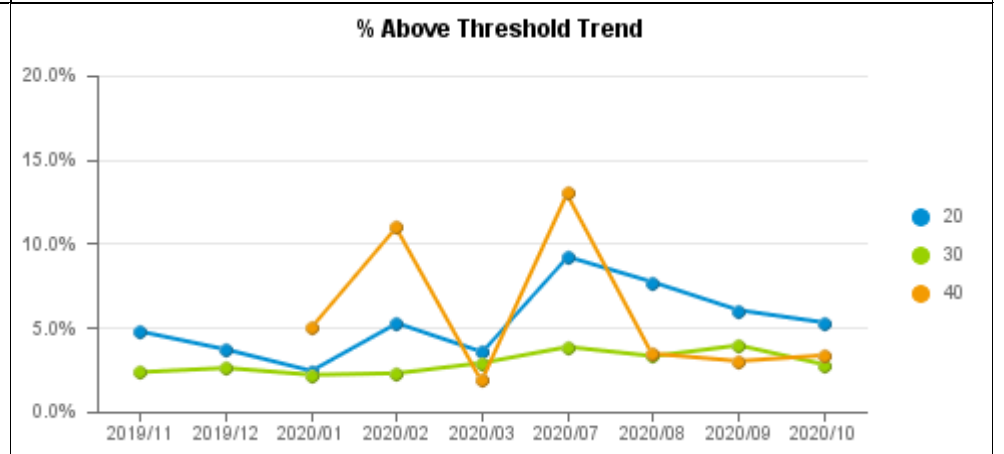
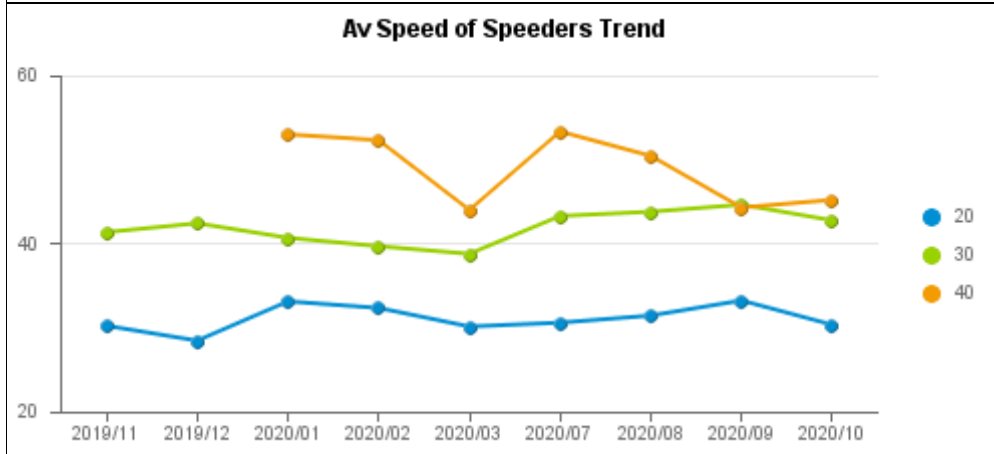
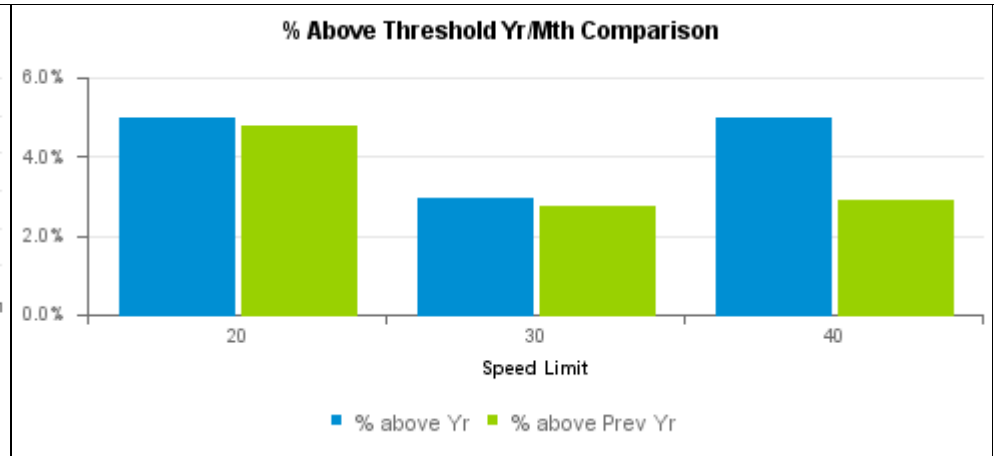
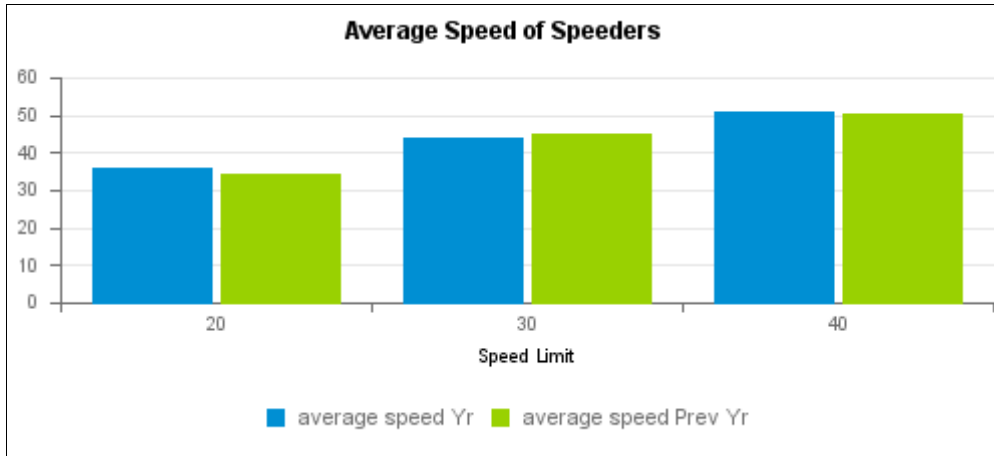
Community SpeedWatch Monthly Report Sessions up to October 2020

North Somerset Summary															
Speed Limit	Sessions		Vehicles		Vehicles Above Threshold		% above threshold		Av Speed of speeders		Top Speed		Letters		
	Mon	Yr	Mon	Yr	Mon	Yr	Mon	Yr	Mon	Yr	Mon	Yr	Mon	NFA	In Processing
20	0	43	0	1,428	0	126	-	8.8%	-	33.1	-	43	-		0
30	17	368	8,118	48,222	148	1,097	1.8%	2.3%	42.5	47.4	50	99	35	32	81
40	0	43	0	5,454	0	20	-	0.4%	-	46.3	-	55	-		0
Total	17	454	8,118	55,104	148	1,243	1.8%	2.3%			50	99	35	32	81



Community SpeedWatch Monthly Report Sessions up to October 2020

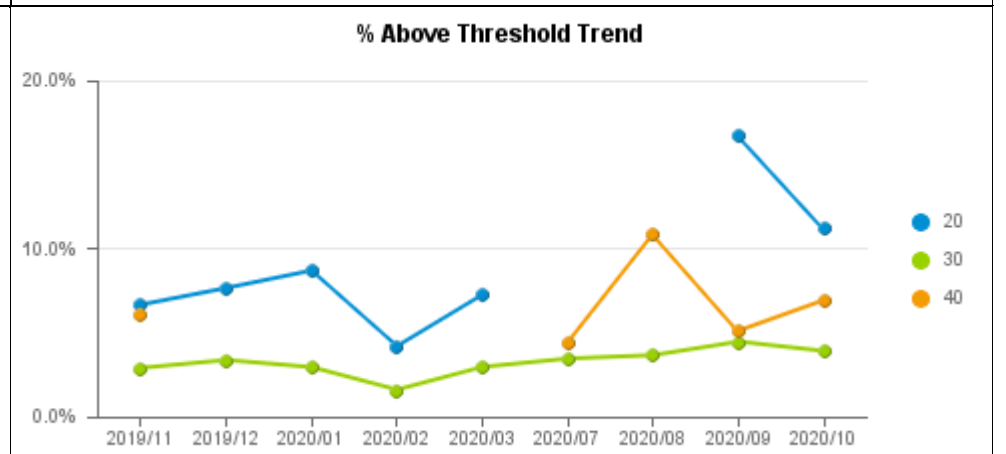
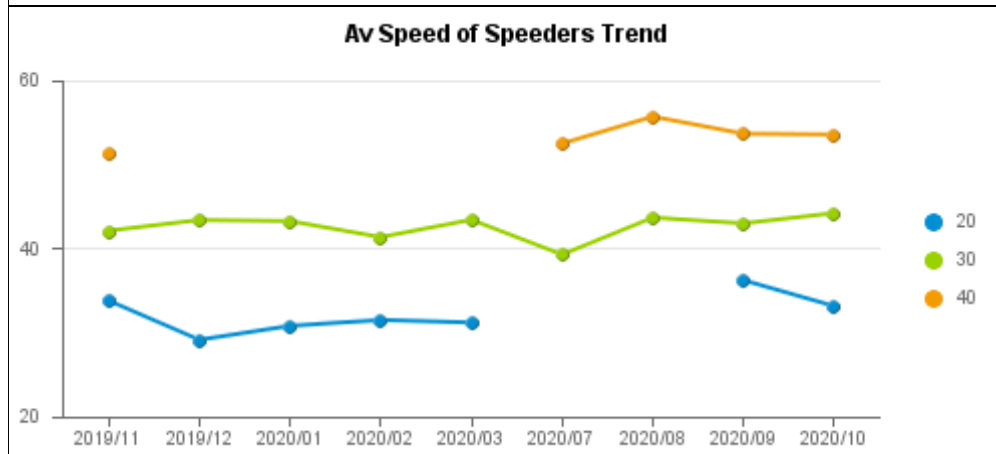
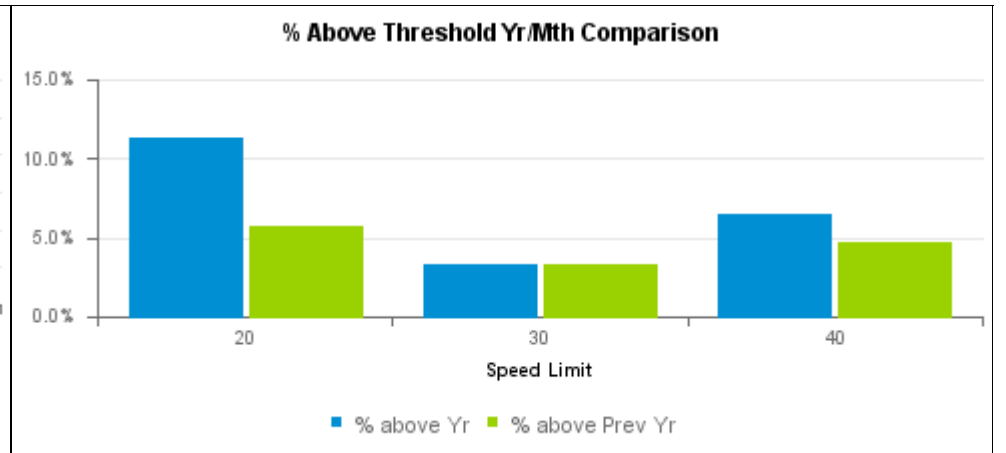
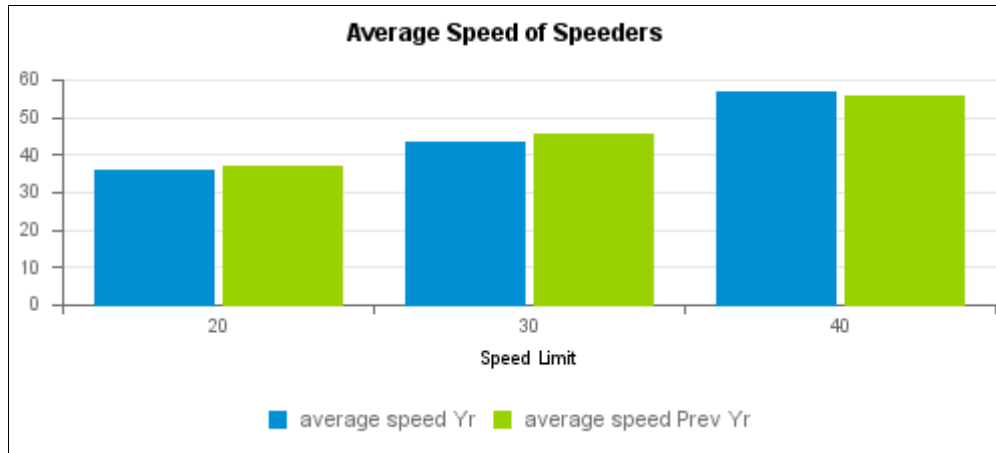
Somerset West Summary																
Speed Limit	Sessions		Vehicles		Vehicles Above Threshold		% above threshold		Av Speed of speeders		Top Speed		Letters			
	Mon	Yr	Mon	Yr	Mon	Yr	Mon	Yr	Mon	Yr	Mon	Yr	Mon	NFA	In Processing	
20	11	232	1,301	11,889	69	592	5.3%	5.0%	30.3	35.8	37	54	24	23	22	
30	66	931	22,258	147,380	624	4,358	2.8%	3.0%	42.8	44.2	67	67	185	114	325	
40	2	17	179	1,503	6	75	3.4%	5.0%	45.2	50.8	49	63	1	4	1	
Total	79	1,180	23,738	160,772	698	5,025	2.9%	3.1%			67	67	210	141	348	



Community SpeedWatch Monthly Report Sessions up to October 2020

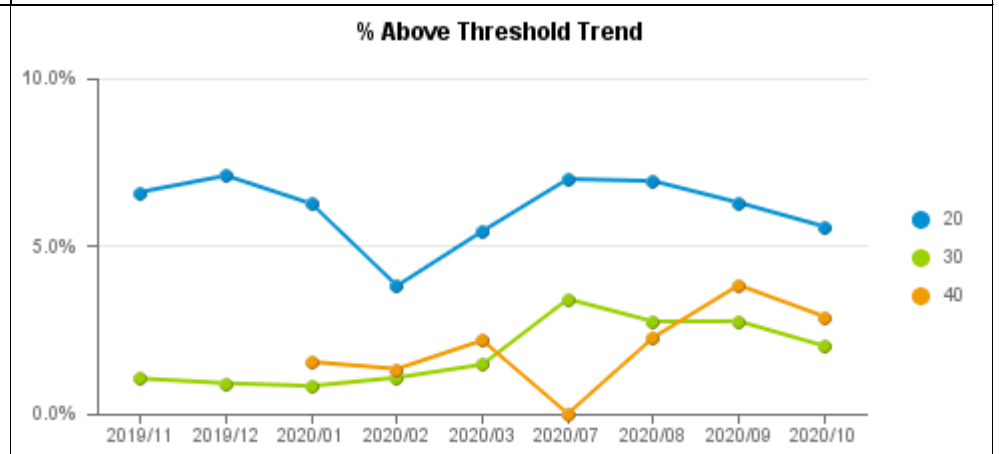
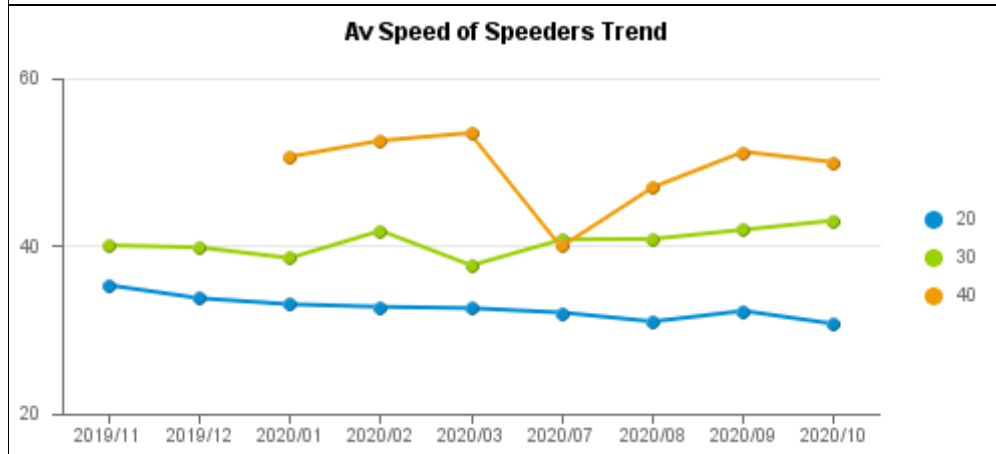
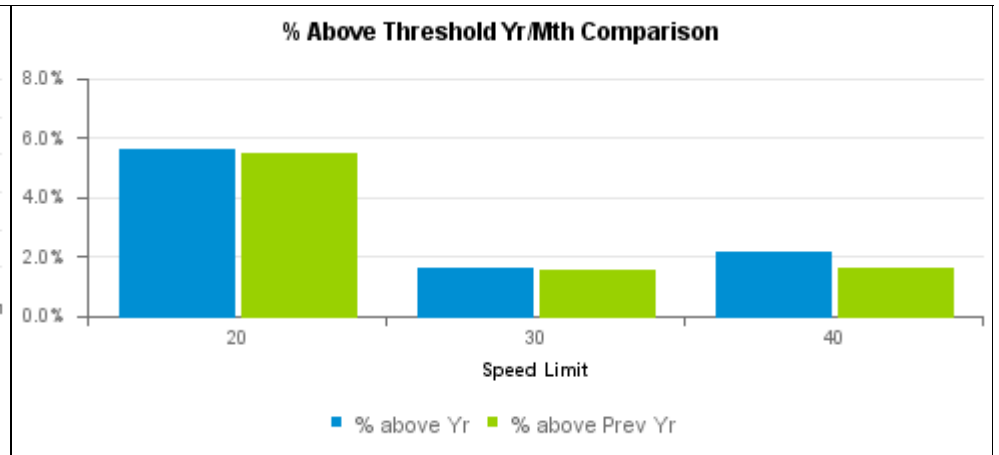
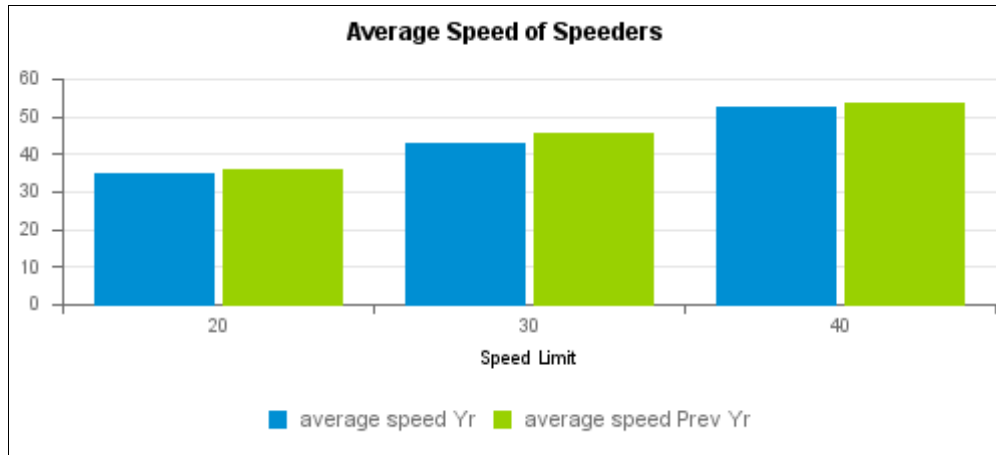
South Gloucestershire Summary

Speed Limit	Sessions		Vehicles		Vehicles Above Threshold		% above threshold		Av Speed of speeders		Top Speed		Letters		
	Mon	Yr	Mon	Yr	Mon	Yr	Mon	Yr	Mon	Yr	Mon	Yr	Mon	NFA	In Processing
20	27	100	10,996	26,438	1,232	3,001	11.2%	11.4%	33.2	35.8	50	56	263	209	760
30	21	419	7,295	45,215	285	1,478	3.9%	3.3%	44.2	43.4	65	65	99	59	127
40	2	45	735	5,733	51	368	6.9%	6.4%	53.6	57.0	69	71	46	1	4
Total	50	564	19,026	77,386	1,566	4,847	8.2%	6.2%			69	71	408	269	891



Community SpeedWatch Monthly Report Sessions up to October 2020

South Somerset Summary																
Speed Limit	Sessions		Vehicles		Vehicles Above Threshold		% above threshold		Av Speed of speeders		Top Speed		Letters			
	Mon	Yr	Mon	Yr	Mon	Yr	Mon	Yr	Mon	Yr	Mon	Yr	Mon	NFA	In Processing	
20	27	491	6,304	51,641	352	2,906	5.6%	5.6%	30.7	34.8	40	52	207	38	107	
30	38	849	9,492	90,108	192	1,480	2.0%	1.6%	43.1	42.9	57	64	151	14	27	
40	3	75	1,103	4,463	32	97	2.9%	2.2%	50.0	52.5	53	61	15	5	12	
Total	68	1,415	16,899	146,212	574	4,483	3.4%	3.0%			57	64	373	57	146	



Community SpeedWatch Monthly Report Sessions up to October 2020

Community SpeedWatch Monthly Report Sessions up to October 2020

Bath & North East Somerset

Sessions Between 07/11/2019 to 30/10/2020

Bath Central

Site Code	Site Location	Speed Limit	Sessions		Vehicles		Vehicles Above Threshold		% Above Threshold		Av Speed of speeders		Top Speed		Letters		
			Mon	Yr	Mon	Yr	Mon	Yr	Mon	Yr	Mon	Yr	Mon	Yr	Mon	NFA	In Processing
BA1301	Great Pulteney Street (William Street)	20	0	2	0	392	0	20	-	5.1%	-	30.7	-	37	-		0
	Total		0	2		392	0	20	-	5.1%			-	37	-		0

Box Road

Site Code	Site Location	Speed Limit	Sessions		Vehicles		Vehicles Above Threshold		% Above Threshold		Av Speed of speeders		Top Speed		Letters		
			Mon	Yr	Mon	Yr	Mon	Yr	Mon	Yr	Mon	Yr	Mon	Yr	Mon	NFA	In Processing
BA2001	A4 (Box Road)	30	7	36	2,323	12,606	209	945	9.0%	7.5%	42.9	46.5	52	63	190	3	16
	Total		7	36	2,323	12,606	209	945	9.0%	7.5%			52	63	190	3	16

Camerton

Site Code	Site Location	Speed Limit	Sessions		Vehicles		Vehicles Above Threshold		% Above Threshold		Av Speed of speeders		Top Speed		Letters		
			Mon	Yr	Mon	Yr	Mon	Yr	Mon	Yr	Mon	Yr	Mon	Yr	Mon	NFA	In Processing
BA1701	B3115 (Tunley Hill)	30	2	6	280	683	40	92	14.3%	13.5%	43.2	42.9	53	53	29	3	8
BA1702	Camerton Road (Red Hill)	30	2	4	340	551	12	17	3.5%	3.1%	41.2	41.0	50	50	9	1	2
	Total		4	10	620	1,234	52	109	8.4%	8.8%			53	53	38	4	10

Community SpeedWatch Monthly Report Sessions up to October 2020

Sessions Between 07/11/2019 to 30/10/2020

Chew Valley

Site Code	Site Location	Speed Limit	Sessions		Vehicles		Vehicles Above Threshold		% Above Threshold		Av Speed of speeders		Top Speed		Letters		
			Mon	Yr	Mon	Yr	Mon	Yr	Mon	Yr	Mon	Yr	Mon	Yr	Mon	NFA	In Processing
BA0101	Tunbridge Road	20	1	7	36	363	5	57	13.9%	15.7%	30.3	33.1	38	43	-	5	0
BA0103	Winford Road	20	2	8	147	676	12	90	8.2%	13.3%	30.7	33.2	36	43	4	9	-1
		Total	3	15	183	1,039	17	147	9.3%	14.1%			38	43	4	14	-1

Ensleigh

Site Code	Site Location	Speed Limit	Sessions		Vehicles		Vehicles Above Threshold		% Above Threshold		Av Speed of speeders		Top Speed		Letters		
			Mon	Yr	Mon	Yr	Mon	Yr	Mon	Yr	Mon	Yr	Mon	Yr	Mon	NFA	In Processing
BA1801	Lansdown ROad	30	0	2	0	702	0	47	-	6.7%	-	43.2	-	56	-		0
		Total	0	2		702	0	47	-	6.7%			-	56	-		0

Freshford

Site Code	Site Location	Speed Limit	Sessions		Vehicles		Vehicles Above Threshold		% Above Threshold		Av Speed of speeders		Top Speed		Letters		
			Mon	Yr	Mon	Yr	Mon	Yr	Mon	Yr	Mon	Yr	Mon	Yr	Mon	NFA	In Processing
BA1201	Freshford Lane	20	1	7	48	185	8	42	16.7%	22.7%	32.0	31.9	44	44	8	0	0
BA1202	High Street (Woodlands)	20	0	3	0	42	0	0	-	0.0%	-	20.0	-	20	-		0
BA1203	High Street (Freshford House)	20	0	3	0	185	0	0	-	0.0%	-	20.0	-	20	-		0
BA1204	Church Road	20	0	2	0	214	0	3	-	1.4%	-	27.5	-	28	-		0
		Total	1	15	48	626	8	45	16.7%	7.2%			44	44	8	0	0

Community SpeedWatch Monthly Report Sessions up to October 2020

Sessions Between 07/11/2019 to 30/10/2020

Midsomer Norton

Site Code	Site Location	Speed Limit	Sessions		Vehicles		Vehicles Above Threshold		% Above Threshold		Av Speed of speeders		Top Speed		Letters		
			Mon	Yr	Mon	Yr	Mon	Yr	Mon	Yr	Mon	Yr	Mon	Yr	Mon	NFA	In Processing
BA0303	North Road	30	1	14	265	1,532	11	29	4.2%	1.9%	38.3	38.8	41	42	8	2	1
BA0306	Northmead Road	30	1	1	379	379	18	18	4.7%	4.7%	39.8	39.8	44	44	18	0	0
BA0312	West Road - Welton Grove	30	1	19	372	2,856	6	68	1.6%	2.4%	38.3	40.8	40	47	5	0	1
BA0313	Radstock Road	30	0	13	0	2,071	0	18	-	0.9%	-	38.0	-	40	-	-	0
BA0318	o/s Westwood	30	0	2	0	335	0	7	-	2.1%	-	38.7	-	43	-	-	0
Total			3	49	1,016	7,173	35	140	3.4%	2.0%			44	47	31	2	2

Timsbury

Site Code	Site Location	Speed Limit	Sessions		Vehicles		Vehicles Above Threshold		% Above Threshold		Av Speed of speeders		Top Speed		Letters		
			Mon	Yr	Mon	Yr	Mon	Yr	Mon	Yr	Mon	Yr	Mon	Yr	Mon	NFA	In Processing
BA1401	North Road	20	3	5	908	1,512	72	150	7.9%	9.9%	32.3	33.3	40	44	39	11	22
BA1402	South Road	20	2	4	191	394	11	28	5.8%	7.1%	30.5	30.7	36	36	8	2	1
Total			5	9	1,099	1,906	83	178	7.6%	9.3%			40	44	47	13	23

Bristol

Sessions Between 01/11/2019 to 23/10/2020

Community SpeedWatch Monthly Report Sessions up to October 2020

Sessions Between 01/11/2019 to 23/10/2020

Bedminster

Site Code	Site Location	Speed Limit	Sessions		Vehicles		Vehicles Above Threshold		% Above Threshold		Av Speed of speeders		Top Speed		Letters		
			Mon	Yr	Mon	Yr	Mon	Yr	Mon	Yr	Mon	Yr	Mon	Yr	Mon	NFA	In Processing
BR0901	St Johns Road	20	3	10	479	978	61	144	12.7%	14.7%	29.3	29.6	35	35	46	12	3
	Total		3	10	479	978	61	144	12.7%	14.7%			35	35	46	12	3

Clanage Road

Site Code	Site Location	Speed Limit	Sessions		Vehicles		Vehicles Above Threshold		% Above Threshold		Av Speed of speeders		Top Speed		Letters		
			Mon	Yr	Mon	Yr	Mon	Yr	Mon	Yr	Mon	Yr	Mon	Yr	Mon	NFA	In Processing
BR0501	Clanage Road	30	0	1	0	98	0	1	-	1.0%	-	31.0	-	31	-		0
	Total		0	1		98	0	1	-	1.0%			-	31	-		0

Conham Road

Site Code	Site Location	Speed Limit	Sessions		Vehicles		Vehicles Above Threshold		% Above Threshold		Av Speed of speeders		Top Speed		Letters		
			Mon	Yr	Mon	Yr	Mon	Yr	Mon	Yr	Mon	Yr	Mon	Yr	Mon	NFA	In Processing
BR0201	Conham Road	20	0	17	0	601	0	119	-	19.8%	-	30.2	-	37	-		0
	Total		0	17		601	0	119	-	19.8%			-	37	-		0

Community SpeedWatch Monthly Report Sessions up to October 2020

Sessions Between 01/11/2019 to 23/10/2020

Cumberland Road

Site Code	Site Location	Speed Limit	Sessions		Vehicles		Vehicles Above Threshold		% Above Threshold		Av Speed of speeders		Top Speed		Letters		
			Mon	Yr	Mon	Yr	Mon	Yr	Mon	Yr	Mon	Yr	Mon	Yr	Mon	NFA	In Processing
BR0401	Cumberland Road	30	2	34	395	2,500	14	70	3.5%	2.8%	38.8	41.8	42	51	12	2	0
	Total		2	34	395	2,500	14	70	3.5%	2.8%			42	51	12	2	0

Sion Hill (Clifton)

Site Code	Site Location	Speed Limit	Sessions		Vehicles		Vehicles Above Threshold		% Above Threshold		Av Speed of speeders		Top Speed		Letters		
			Mon	Yr	Mon	Yr	Mon	Yr	Mon	Yr	Mon	Yr	Mon	Yr	Mon	NFA	In Processing
BR1501	Sion Hill	20	0	15	0	1,285	0	212	-	16.5%	-	29.8	-	37	-		0
	Total		0	15		1,285	0	212	-	16.5%			-	37	-		0

Community SpeedWatch Monthly Report Sessions up to October 2020

Sessions Between 01/11/2019 to 23/10/2020

Stoke Bishop and Westbury

Site Code	Site Location	Speed Limit	Sessions		Vehicles		Vehicles Above Threshold		% Above Threshold		Av Speed of speeders		Top Speed		Letters		
			Mon	Yr	Mon	Yr	Mon	Yr	Mon	Yr	Mon	Yr	Mon	Yr	Mon	NFA	In Processing
BR1101	Bell Barn Rd/Coombe Bridge Ave	20	0	5	0	71	0	30	-	42.3%	-	29.0	-	33	-		0
BR1104	Stoke Hill	30	0	2	0	263	0	5	-	1.9%	-	40.0	-	45	-		0
BR1105	Coombe Lane	20	0	6	0	459	0	111	-	24.2%	-	32.2	-	52	-		0
BR1106	Canford Lane (Junction with Churchill Dri	30	0	4	0	984	0	8	-	0.8%	-	37.3	-	39	-		0
BR1107	Old Sneed Avenue	20	0	8	0	237	0	83	-	35.0%	-	30.6	-	37	-		0
BR1108	Eastfield Road	20	0	7	0	885	0	65	-	7.3%	-	28.0	-	31	-		0
BR1109	Parrys Lane (Opposite No 38)	30	0	3	0	400	0	4	-	1.0%	-	38.0	-	40	-		0
BR1110	Reedley Road	20	0	8	0	333	0	65	-	19.5%	-	32.0	-	52	-		0
BR1111	Stoke Lane (Outside no. 174)	20	0	8	0	511	0	93	-	18.2%	-	32.8	-	58	-		0
BR1112	Stoke Lane (Outside no. 171)	20	0	1	0	108	0	32	-	29.6%	-	31.5	-	39	-		0
BR1114	South Croft (Henleaze)	20	0	3	0	115	0	9	-	7.8%	-	29.0	-	38	-		0
BR1115	Stoke Hill (Church Avenue)	20	0	2	0	423	0	10	-	2.4%	-	37.5	-	39	-		0
BR1116	Passage Road (Channels Hill)	20	0	1	0	500	0	28	-	5.6%	-	28.9	-	33	-		0
	Total		0	58		5,289	0	543	-	10.2%			-	58	-		0

Community SpeedWatch Monthly Report Sessions up to October 2020

Sessions Between 01/11/2019 to 23/10/2020

Troopers Hill Road

Site Code	Site Location	Speed Limit	Sessions		Vehicles		Vehicles Above Threshold		% Above Threshold		Av Speed of speeders		Top Speed		Letters		
			Mon	Yr	Mon	Yr	Mon	Yr	Mon	Yr	Mon	Yr	Mon	Yr	Mon	NFA	In Processing
BR0101	Troopers Hill Road - 87a	20	0	13	0	138	0	38	-	27.5%	-	30.2	-	38	-		0
BR0102	Troopers Hill Road - 109	20	0	11	0	359	0	53	-	14.8%	-	29.4	-	36	-		0
	Total		0	24		497	0	91	-	18.3%			-	38	-		0

Wick Road

Site Code	Site Location	Speed Limit	Sessions		Vehicles		Vehicles Above Threshold		% Above Threshold		Av Speed of speeders		Top Speed		Letters		
			Mon	Yr	Mon	Yr	Mon	Yr	Mon	Yr	Mon	Yr	Mon	Yr	Mon	NFA	In Processing
BR1001	Newbridge Road - St Annes Wood	20	3	23	246	1,149	67	354	27.2%	30.8%	32.0	33.8	41	44	24	6	37
BR1004	Newbridge Rd (Nightingale Close)	20	0	4	0	113	0	38	-	33.6%	-	29.4	-	37	-		0
	Total		3	27	246	1,262	67	392	27.2%	31.0%			41	44	24	6	37

Mendip

Sessions Between 01/11/2019 to 30/10/2020

Community SpeedWatch Monthly Report Sessions up to October 2020

Sessions Between 01/11/2019 to 30/10/2020

Baltonsborough

Site Code	Site Location	Speed Limit	Sessions		Vehicles		Vehicles Above Threshold		% Above Threshold		Av Speed of speeders		Top Speed		Letters		
			Mon	Yr	Mon	Yr	Mon	Yr	Mon	Yr	Mon	Yr	Mon	Yr	Mon	NFA	In Processing
ME0201	Ham Street South	30	0	1	0	66	0	3	-	4.5%	-	36.5	-	37	-		0
ME0202	Ham Street North	30	0	2	0	110	0	7	-	6.4%	-	34.7	-	38	-		0
ME0203	Church Lane	30	0	1	0	92	0	9	-	9.8%	-	38.4	-	41	-		0
ME0204	Martin Street	30	0	1	0	53	0	10	-	18.9%	-	38.3	-	42	-		0
ME0205	Church Lane (Apple Meadow)	30	0	5	0	352	0	17	-	4.8%	-	40.3	-	47	-		0
ME0206	Ham Street (Village Hall)	20	0	2	0	104	0	24	-	23.1%	-	28.7	-	32	-		0
ME0207	Ham Street (Applefields)	30	0	10	0	608	0	77	-	12.7%	-	40.3	-	47	-		0
	Total		0	22		1,385	0	147	-	9.8%			-	47	-		0

Beckington

Site Code	Site Location	Speed Limit	Sessions		Vehicles		Vehicles Above Threshold		% Above Threshold		Av Speed of speeders		Top Speed		Letters		
			Mon	Yr	Mon	Yr	Mon	Yr	Mon	Yr	Mon	Yr	Mon	Yr	Mon	NFA	In Processing
ME2603	Castle Corner	30	1	11	139	334	11	26	7.9%	7.8%	41.3	43.2	56	56	9	1	1
ME2604	Castle Corner	20	1	13	139	334	27	83	19.4%	24.9%	32.9	34.9	42	45	18	1	8
	Total		2	24	278	668	33	109	11.9%	14.7%			56	56	27	2	9

Community SpeedWatch Monthly Report Sessions up to October 2020

Sessions Between 01/11/2019 to 30/10/2020

Chilcompton

Site Code	Site Location	Speed Limit	Sessions		Vehicles		Vehicles Above Threshold		% Above Threshold		Av Speed of speeders		Top Speed		Letters		
			Mon	Yr	Mon	Yr	Mon	Yr	Mon	Yr	Mon	Yr	Mon	Yr	Mon	NFA	In Processing
ME0401	Co-Op - Footpath/grassed area outside H	30	1	12	370	1,564	16	33	4.3%	2.1%	38.8	39.5	43	43	12	4	0
ME0402	Greenditch Close	30	0	13	0	1,733	0	27	-	1.6%	-	39.4	-	43	-		0
ME0403	Village Hall	30	1	9	540	1,526	4	13	0.7%	0.9%	37.5	39.6	39	48	2	0	2
ME0404	Stockhill Road	30	0	3	0	8	0	1	-	12.5%	-	30.0	-	30	-		0
ME0405	Parsonage Lane	30	0	5	0	148	0	4	-	2.7%	-	37.7	-	39	-		0
ME0406	Naishes Cross - Hoecroft Gardens	30	0	2	0	15	0	1	-	6.7%	-	30.0	-	30	-		0
ME0407	B3139	30	0	6	0	536	0	14	-	2.6%	-	39.5	-	43	-		0
ME0408	Bakers Lane	30	0	7	0	235	0	3	-	1.3%	-	35.7	-	40	-		0
ME0409	Bath/Wells Road Layby	40	0	14	0	1,475	0	18	-	1.2%	-	50.1	-	55	-		0
ME0410	The Street (Somerway)	30	0	3	0	347	0	5	-	1.4%	-	35.8	-	40	-		0
ME0411	The Street - Woodview Bus Stop	30	2	12	213	753	0	1	0.0%	0.1%	30.0	33.0	30	36	-	0	0
	Total		4	86	1,123	8,340	20	120	1.8%	1.4%			43	55	14	4	2

Community SpeedWatch Monthly Report Sessions up to October 2020

Sessions Between 01/11/2019 to 30/10/2020

Cranmore

Site Code	Site Location	Speed Limit	Sessions		Vehicles		Vehicles Above Threshold		% Above Threshold		Av Speed of speeders		Top Speed		Letters		
			Mon	Yr	Mon	Yr	Mon	Yr	Mon	Yr	Mon	Yr	Mon	Yr	Mon	NFA	In Processing
ME3302	A361 (Tansey)	30	0	1	0	122	0	14	-	11.5%	-	48.2	-	57	-		0
ME3303	A361 (Dean)	40	0	1	0	329	0	6	-	1.8%	-	49.4	-	53	-		0
ME3304	Tansey Road (Royal Navy Test Site)	30	0	7	0	626	0	59	-	9.4%	-	42.7	-	51	-		0
ME3305	Tansey Road (by White House)	30	0	5	0	531	0	97	-	18.3%	-	44.9	-	56	-		0
	Total		0	14		1,608	0	176	-	10.8%			-	57	-		0

Croscombe

Site Code	Site Location	Speed Limit	Sessions		Vehicles		Vehicles Above Threshold		% Above Threshold		Av Speed of speeders		Top Speed		Letters		
			Mon	Yr	Mon	Yr	Mon	Yr	Mon	Yr	Mon	Yr	Mon	Yr	Mon	NFA	In Processing
ME3201	Long Street (George Inn)	30	0	3	0	578	0	15	-	2.6%	-	28.4	-	31	-		0
ME3202	Long Street (Coombe Cottages)	20	6	45	1,437	9,724	80	867	5.6%	8.9%	30.3	31.9	36	44	71	3	6
	Total		6	48	1,437	10,302	80	882	5.6%	8.6%			36	44	71	3	6

Community SpeedWatch Monthly Report Sessions up to October 2020

Sessions Between 01/11/2019 to 30/10/2020

Doultong

Site Code	Site Location	Speed Limit	Sessions		Vehicles		Vehicles Above Threshold		% Above Threshold		Av Speed of speeders		Top Speed		Letters		
			Mon	Yr	Mon	Yr	Mon	Yr	Mon	Yr	Mon	Yr	Mon	Yr	Mon	NFA	In Processing
ME0601	A361	30	3	44	2,673	10,924	25	145	0.9%	1.3%	38.4	41.1	43	57	19	4	2
ME0602	Chenlynch Road	30	1	7	132	319	2	17	1.5%	5.3%	36.5	39.5	37	43	1	0	1
ME0606	Chenlynch Road	20	1	3	132	355	4	33	3.0%	9.3%	28.0	34.4	29	46	4	0	0
Total			5	54	2,937	11,598	31	195	1.1%	1.7%			43	57	24	4	3

Evercreech

Site Code	Site Location	Speed Limit	Sessions		Vehicles		Vehicles Above Threshold		% Above Threshold		Av Speed of speeders		Top Speed		Letters		
			Mon	Yr	Mon	Yr	Mon	Yr	Mon	Yr	Mon	Yr	Mon	Yr	Mon	NFA	In Processing
ME0904	Horsehill Meadows	30	3	52	195	1,764	36	309	18.5%	17.5%	43.4	46.0	52	57	22	4	10
Total			3	52	195	1,764	36	309	18.5%	17.5%			52	57	22	4	10

Farleigh Hungerford

Site Code	Site Location	Speed Limit	Sessions		Vehicles		Vehicles Above Threshold		% Above Threshold		Av Speed of speeders		Top Speed		Letters		
			Mon	Yr	Mon	Yr	Mon	Yr	Mon	Yr	Mon	Yr	Mon	Yr	Mon	NFA	In Processing
ME1001	A366	30	3	85	566	12,766	51	974	9.0%	7.6%	43.7	47.0	60	64	45	2	4
Total			3	85	566	12,766	51	974	9.0%	7.6%			60	64	45	2	4

Community SpeedWatch Monthly Report Sessions up to October 2020

Sessions Between 01/11/2019 to 30/10/2020

Frome

Site Code	Site Location	Speed Limit	Sessions		Vehicles		Vehicles Above Threshold		% Above Threshold		Av Speed of speeders		Top Speed		Letters		
			Mon	Yr	Mon	Yr	Mon	Yr	Mon	Yr	Mon	Yr	Mon	Yr	Mon	NFA	In Processing
ME1101	Berkely School	30	3	145	212	3,404	34	315	16.0%	9.3%	43.8	48.0	52	60	26	2	6
ME1103	B3092	30	0	7	0	257	0	13	-	5.1%	-	44.0	-	61	-		0
ME1104	Marston Road	30	0	9	0	712	0	23	-	3.2%	-	42.4	-	54	-		0
ME1105	Marston Lane	30	0	3	0	216	0	4	-	1.9%	-	38.5	-	40	-		0
ME1107	The Clink	30	2	9	364	1,110	7	30	1.9%	2.7%	39.8	41.9	42	51	7	0	0
ME1109	Bath Road (B3090)	30	4	75	590	5,275	28	263	4.7%	5.0%	41.1	44.1	46	51	21	2	5
ME1110	Styles Hill	30	8	140	1,777	11,099	92	460	5.2%	4.1%	42.0	44.3	48	61	71	9	12
ME1111	Warminster Road	30	1	42	153	3,291	13	272	8.5%	8.3%	42.5	44.9	50	58	11	1	1
Total			18	430	3,096	25,364	174	1,380	5.6%	5.4%			52	61	136	14	24

Glastonbury

Site Code	Site Location	Speed Limit	Sessions		Vehicles		Vehicles Above Threshold		% Above Threshold		Av Speed of speeders		Top Speed		Letters		
			Mon	Yr	Mon	Yr	Mon	Yr	Mon	Yr	Mon	Yr	Mon	Yr	Mon	NFA	In Processing
ME1201	Wells Road	30	0	10	0	88	0	14	-	15.9%	-	38.3	-	41	-		0
Total			0	10		88	0	14	-	15.9%			-	41	-		0

Community SpeedWatch Monthly Report Sessions up to October 2020

Sessions Between 01/11/2019 to 30/10/2020

Henton

Site Code	Site Location	Speed Limit	Sessions		Vehicles		Vehicles Above Threshold		% Above Threshold		Av Speed of speeders		Top Speed		Letters		
			Mon	Yr	Mon	Yr	Mon	Yr	Mon	Yr	Mon	Yr	Mon	Yr	Mon	NFA	In Processing
ME3001	The Village Hall	30	2	19	186	1,092	3	32	1.6%	2.9%	39.0	38.7	42	42	1	0	2
ME3002	Bleadney House	30	3	12	242	1,112	9	33	3.7%	3.0%	39.2	40.0	42	47	7	1	1
ME3003	Henton House	30	2	17	272	747	28	51	10.3%	6.8%	40.2	40.2	46	46	20	3	5
ME3004	Wells Nursing Home	30	0	6	0	101	0	2	-	2.0%	-	42.0	-	44	-	-	0
	Total		7	54	700	3,052	37	118	5.3%	3.7%			46	47	28	4	8

Horrington

Site Code	Site Location	Speed Limit	Sessions		Vehicles		Vehicles Above Threshold		% Above Threshold		Av Speed of speeders		Top Speed		Letters		
			Mon	Yr	Mon	Yr	Mon	Yr	Mon	Yr	Mon	Yr	Mon	Yr	Mon	NFA	In Processing
ME0802	Farmers Joy	30	1	30	83	842	5	99	6.0%	11.8%	40.7	42.9	46	55	4	0	1
ME0803	Horrington School	30	1	24	137	1,029	14	82	10.2%	8.0%	41.1	43.5	47	55	10	2	2
ME0805	Gilbert Scott Road	30	1	1	133	133	8	8	6.0%	6.0%	36.5	36.5	39	39	4	1	3
ME0806	Frome Road Farm	30	2	28	182	1,010	9	58	4.9%	5.7%	42.3	41.8	59	59	6	1	2
ME0807	Upper Breach	30	1	36	174	1,529	28	189	16.1%	12.4%	41.0	44.8	47	58	22	3	3
	Total		6	119	709	4,543	63	436	8.9%	9.5%			59	59	46	7	11

Community SpeedWatch Monthly Report Sessions up to October 2020

Sessions Between 01/11/2019 to 30/10/2020

Lydford on the Fosse

Site Code	Site Location	Speed Limit	Sessions		Vehicles		Vehicles Above Threshold		% Above Threshold		Av Speed of speeders		Top Speed		Letters		
			Mon	Yr	Mon	Yr	Mon	Yr	Mon	Yr	Mon	Yr	Mon	Yr	Mon	NFA	In Processing
ME1401	A37 (30mph)	30	1	11	596	3,087	22	98	3.7%	3.2%	40.9	43.9	46	58	17	2	3
ME1402	A37 (40mph)	40	1	4	596	1,197	1	2	0.2%	0.2%	47.0	48.0	47	49	1	0	0
ME1403	B3153	30	9	157	2,581	14,130	63	414	2.4%	2.9%	42.6	44.9	55	58	54	2	7
ME1404	Lydford Village 2	40	2	40	549	3,924	2	25	0.4%	0.6%	52.0	52.9	56	60	2	0	0
Total			13	212	4,322	22,338	88	539	2.0%	2.4%			56	60	74	4	10

Meare and Westhay

Site Code	Site Location	Speed Limit	Sessions		Vehicles		Vehicles Above Threshold		% Above Threshold		Av Speed of speeders		Top Speed		Letters		
			Mon	Yr	Mon	Yr	Mon	Yr	Mon	Yr	Mon	Yr	Mon	Yr	Mon	NFA	In Processing
ME3801	B3151	30	2	2	406	406	0	0	0.0%	0.0%	30.0	30.0	30	30	-	0	0
ME3802	Main Road (B3151)	30	2	2	341	341	10	10	2.9%	2.9%	38.3	38.3	44	44	8	0	2
Total			4	4	747	747	10	10	1.3%	1.3%			44	44	8	0	2

Mells

Site Code	Site Location	Speed Limit	Sessions		Vehicles		Vehicles Above Threshold		% Above Threshold		Av Speed of speeders		Top Speed		Letters		
			Mon	Yr	Mon	Yr	Mon	Yr	Mon	Yr	Mon	Yr	Mon	Yr	Mon	NFA	In Processing
ME1501	Holes Lane	30	1	13	58	254	8	40	13.8%	15.7%	44.6	44.2	51	55	7	1	0
Total			1	13	58	254	8	40	13.8%	15.7%			51	55	7	1	0

Community SpeedWatch Monthly Report Sessions up to October 2020

Sessions Between 01/11/2019 to 30/10/2020

Norton St Philip

Site Code	Site Location	Speed Limit	Sessions		Vehicles		Vehicles Above Threshold		% Above Threshold		Av Speed of speeders		Top Speed		Letters		
			Mon	Yr	Mon	Yr	Mon	Yr	Mon	Yr	Mon	Yr	Mon	Yr	Mon	NFA	In Processing
ME0106	Bath Road (Monmouth Paddock)	20	0	6	0	401	0	29	-	7.2%	-	28.0	-	30	-		0
ME0108	Church Street	20	0	25	0	4,109	0	433	-	10.5%	-	34.6	-	47	-		0
	Total		0	31		4,510	0	462	-	10.2%			-	47	-		0

Pilton

Site Code	Site Location	Speed Limit	Sessions		Vehicles		Vehicles Above Threshold		% Above Threshold		Av Speed of speeders		Top Speed		Letters		
			Mon	Yr	Mon	Yr	Mon	Yr	Mon	Yr	Mon	Yr	Mon	Yr	Mon	NFA	In Processing
ME2501	A361 (Whitestone Road)	30	0	13	0	2,011	0	24	-	1.2%	-	40.0	-	46	-		0
ME2502	A361 (B3136)	30	2	61	1,214	11,254	56	605	4.6%	5.4%	45.4	47.8	58	67	24	3	29
ME2505	A361 (Park Hill)	30	2	3	942	1,524	31	52	3.3%	3.4%	41.6	42.0	50	50	29	1	1
	Total		4	77	2,156	14,789	87	681	4.0%	4.6%			58	67	53	4	30

Rode

Site Code	Site Location	Speed Limit	Sessions		Vehicles		Vehicles Above Threshold		% Above Threshold		Av Speed of speeders		Top Speed		Letters		
			Mon	Yr	Mon	Yr	Mon	Yr	Mon	Yr	Mon	Yr	Mon	Yr	Mon	NFA	In Processing
ME1801	Rode Hill - Lower	30	4	34	819	5,189	29	225	3.5%	4.3%	41.9	44.3	49	54	21	5	3
ME1803	Bradford Road	30	1	29	238	3,346	21	374	8.8%	11.2%	40.3	42.3	45	50	18	2	1
	Total		5	63	1,057	8,535	50	599	4.7%	7.0%			49	54	39	7	4

Community SpeedWatch Monthly Report Sessions up to October 2020

Sessions Between 01/11/2019 to 30/10/2020

Rodney Stoke

Site Code	Site Location	Speed Limit	Sessions		Vehicles		Vehicles Above Threshold		% Above Threshold		Av Speed of speeders		Top Speed		Letters		
			Mon	Yr	Mon	Yr	Mon	Yr	Mon	Yr	Mon	Yr	Mon	Yr	Mon	NFA	In Processing
ME3101	A371 (Rodney Stoke Garage)	30	0	8	0	461	0	8	-	1.7%	-	38.0	-	42	-		0
ME3104	Millway (Millway Cottage)	20	1	20	16	138	5	38	31.3%	27.5%	34.3	32.7	39	42	3	2	0
ME3105	Millway (South Hele)	20	0	2	0	10	0	1	-	10.0%	-	37.0	-	37	-		0
Total			1	30	16	609	5	47	31.3%	7.6%			39	42	3	2	0

Shepton Mallet

Site Code	Site Location	Speed Limit	Sessions		Vehicles		Vehicles Above Threshold		% Above Threshold		Av Speed of speeders		Top Speed		Letters		
			Mon	Yr	Mon	Yr	Mon	Yr	Mon	Yr	Mon	Yr	Mon	Yr	Mon	NFA	In Processing
ME1904	Fosse Lane	30	0	4	0	419	0	6	-	1.4%	-	37.5	-	39	-		0
ME1905	Old Wells Road	30	0	2	0	162	0	3	-	1.9%	-	38.0	-	39	-		0
ME1906	West Shepton	30	0	2	0	128	0	5	-	3.9%	-	36.5	-	37	-		0
ME1910	Whitestone Road (Whitstone Rise)	30	0	1	0	334	0	7	-	2.1%	-	38.3	-	40	-		0
Total			0	9		1,043	0	21	-	2.0%			-	40	-		0

Community SpeedWatch Monthly Report Sessions up to October 2020

Sessions Between 01/11/2019 to 30/10/2020

Trudoxhill

Site Code	Site Location	Speed Limit	Sessions		Vehicles		Vehicles Above Threshold		% Above Threshold		Av Speed of speeders		Top Speed		Letters		
			Mon	Yr	Mon	Yr	Mon	Yr	Mon	Yr	Mon	Yr	Mon	Yr	Mon	NFA	In Processing
ME2901	Westend Lane	30	2	21	212	737	2	22	0.9%	3.0%	34.3	36.0	37	40	2	0	0
ME2903	Wyland	30	0	22	0	1,073	0	17	-	1.6%	-	39.3	-	51	-		0
ME2904	West End Lane	30	1	1	67	67	12	12	17.9%	17.9%	39.3	39.3	45	45	8	1	3
	Total		3	44	279	1,877	14	51	5.0%	2.7%			45	51	10	1	3

Walton

Site Code	Site Location	Speed Limit	Sessions		Vehicles		Vehicles Above Threshold		% Above Threshold		Av Speed of speeders		Top Speed		Letters		
			Mon	Yr	Mon	Yr	Mon	Yr	Mon	Yr	Mon	Yr	Mon	Yr	Mon	NFA	In Processing
ME3701	Mildred Road	30	8	13	6,811	11,159	88	125	1.3%	1.1%	39.8	40.1	46	46	83	0	5
ME3702	Main Street	30	4	8	2,660	5,626	17	22	0.6%	0.4%	38.0	38.5	40	47	16	0	1
	Total		12	21	9,471	16,785	105	147	1.1%	0.9%			46	47	99	0	6

Wanstrow

Site Code	Site Location	Speed Limit	Sessions		Vehicles		Vehicles Above Threshold		% Above Threshold		Av Speed of speeders		Top Speed		Letters		
			Mon	Yr	Mon	Yr	Mon	Yr	Mon	Yr	Mon	Yr	Mon	Yr	Mon	NFA	In Processing
ME2201	A359	30	6	19	1,580	4,989	120	253	7.6%	5.1%	44.1	44.6	53	54	85	15	20
	Total		6	19	1,580	4,989	120	253	7.6%	5.1%			53	54	85	15	20

Community SpeedWatch Monthly Report Sessions up to October 2020

North Somerset

Sessions Between 05/11/2019 to 27/10/2020

Blagdon

Site Code	Site Location	Speed Limit	Sessions		Vehicles		Vehicles Above Threshold		% Above Threshold		Av Speed of speeders		Top Speed		Letters		
			Mon	Yr	Mon	Yr	Mon	Yr	Mon	Yr	Mon	Yr	Mon	Yr	Mon	NFA	In Processing
NS0601	Bath Road (30 pmh)	30	0	3	0	143	0	1	-	0.7%	-	40.0	-	40	-		0
NS0602	Bath Road (20mph)	20	0	3	0	143	0	11	-	7.7%	-	28.5	-	32	-		0
	Total		0	6		286	0	12	-	4.2%			-	40	-		0

Cleeve

Site Code	Site Location	Speed Limit	Sessions		Vehicles		Vehicles Above Threshold		% Above Threshold		Av Speed of speeders		Top Speed		Letters		
			Mon	Yr	Mon	Yr	Mon	Yr	Mon	Yr	Mon	Yr	Mon	Yr	Mon	NFA	In Processing
NS1903	Bishops Road	30	0	10	0	687	0	7	-	1.0%	-	36.8	-	41	-		0
NS1904	Main Road	30	0	10	0	778	0	2	-	0.3%	-	47.5	-	48	-		0
	Total		0	20		1,465	0	9	-	0.6%			-	48	-		0

Clevedon

Site Code	Site Location	Speed Limit	Sessions		Vehicles		Vehicles Above Threshold		% Above Threshold		Av Speed of speeders		Top Speed		Letters		
			Mon	Yr	Mon	Yr	Mon	Yr	Mon	Yr	Mon	Yr	Mon	Yr	Mon	NFA	In Processing
NS0915	B3133 (Barnes Ground)	30	2	2	1,365	1,365	19	19	1.4%	1.4%	39.2	39.2	44	44	-	6	13
	Total		2	2	1,365	1,365	19	19	1.4%	1.4%			44	44	-	6	13

Community SpeedWatch Monthly Report Sessions up to October 2020

Elborough

Site Code	Site Location	Speed Limit	Sessions		Vehicles		Vehicles Above Threshold		% Above Threshold		Av Speed of speeders		Top Speed		Letters		
			Mon	Yr	Mon	Yr	Mon	Yr	Mon	Yr	Mon	Yr	Mon	Yr	Mon	NFA	In Processing
NS2202	Banwell Road (Hillend)	30	0	7	0	1,563	0	84	-	5.4%	-	42.0	-	48	-		0
	Total		0	7		1,563	0	84	-	5.4%			-	48	-		0

Hutton

Site Code	Site Location	Speed Limit	Sessions		Vehicles		Vehicles Above Threshold		% Above Threshold		Av Speed of speeders		Top Speed		Letters		
			Mon	Yr	Mon	Yr	Mon	Yr	Mon	Yr	Mon	Yr	Mon	Yr	Mon	NFA	In Processing
NS1207	Oldmixon Road (Narrows)	30	2	30	709	2,538	26	70	3.7%	2.8%	39.0	39.8	42	45	15	4	7
	Total		2	30	709	2,538	26	70	3.7%	2.8%			42	45	15	4	7

Locking Castle

Site Code	Site Location	Speed Limit	Sessions		Vehicles		Vehicles Above Threshold		% Above Threshold		Av Speed of speeders		Top Speed		Letters		
			Mon	Yr	Mon	Yr	Mon	Yr	Mon	Yr	Mon	Yr	Mon	Yr	Mon	NFA	In Processing
NS1801	Maltings	20	0	38	0	1,285	0	115	-	8.9%	-	33.1	-	43	-		0
	Total		0	38		1,285	0	115	-	8.9%			-	43	-		0

Community SpeedWatch Monthly Report Sessions up to October 2020

Nailsea

Site Code	Site Location	Speed Limit	Sessions		Vehicles		Vehicles Above Threshold		% Above Threshold		Av Speed of speeders		Top Speed		Letters		
			Mon	Yr	Mon	Yr	Mon	Yr	Mon	Yr	Mon	Yr	Mon	Yr	Mon	NFA	In Processing
NS0302	Nailsea Park Road (Grassed area)	30	2	50	632	3,854	24	191	3.8%	5.0%	40.1	42.1	50	65	11	4	9
NS0305	Clevedon Road	30	0	10	0	207	0	3	-	1.4%	-	33.5	-	36	-		0
NS0307	Queens Road	40	0	11	0	961	0	12	-	1.2%	-	46.8	-	52	-		0
NS0309	Stockway South	30	0	4	0	151	0	3	-	2.0%	-	36.5	-	37	-		0
NS0310	Stockway North (F/Ship)	30	0	3	0	186	0	9	-	4.8%	-	40.0	-	45	-		0
NS0311	Stockway North - North Side	30	0	1	0	133	0	4	-	3.0%	-	39.3	-	43	-		0
NS0314	High Street (Lamp post 17)	30	1	14	559	559	2	2	0.4%	0.4%	36.0	36.0	36	36	-	1	1
	Total		3	93	1,191	6,051	26	224	2.2%	3.7%			50	65	11	5	10

Portishead

Site Code	Site Location	Speed Limit	Sessions		Vehicles		Vehicles Above Threshold		% Above Threshold		Av Speed of speeders		Top Speed		Letters		
			Mon	Yr	Mon	Yr	Mon	Yr	Mon	Yr	Mon	Yr	Mon	Yr	Mon	NFA	In Processing
NS0401	Down Road (Charlcombe Rise)	30	0	1	0	999	0	1	-	0.1%	-	99.0	-	99	-		0
	Total		0	1		999	0	1	-	0.1%			-	99	-		0

Walton-in-Gordano

Site Code	Site Location	Speed Limit	Sessions		Vehicles		Vehicles Above Threshold		% Above Threshold		Av Speed of speeders		Top Speed		Letters		
			Mon	Yr	Mon	Yr	Mon	Yr	Mon	Yr	Mon	Yr	Mon	Yr	Mon	NFA	In Processing
NS1701	B3124	30	1	8	740	3,813	20	149	2.7%	3.9%	42.5	44.6	50	54	-	1	19
NS1702	B3124 (Adjacent to Plum Tree Cottage)	30	1	37	385	6,349	22	270	5.7%	4.3%	41.9	43.8	50	55	-	3	19
	Total		2	45	1,125	10,162	42	419	3.7%	4.1%			50	55	-	4	38

Community SpeedWatch Monthly Report Sessions up to October 2020

Wrington

Site Code	Site Location	Speed Limit	Sessions		Vehicles		Vehicles Above Threshold		% Above Threshold		Av Speed of speeders		Top Speed		Letters		
			Mon	Yr	Mon	Yr	Mon	Yr	Mon	Yr	Mon	Yr	Mon	Yr	Mon	NFA	In Processing
NS1602	West Hay Road	30	1	39	168	2,541	7	114	4.2%	4.5%	40.0	44.8	47	66	5	1	1
NS1603	Butts Batch	30	1	12	159	414	4	13	2.5%	3.1%	38.0	38.0	41	41	-	1	3
NS1606	Long Lane	30	1	18	201	1,030	13	75	6.5%	7.3%	39.5	42.6	42	50	2	5	6
Total			3	69	528	3,985	24	202	4.5%	5.0%			47	66	7	7	10

Yatton

Site Code	Site Location	Speed Limit	Sessions		Vehicles		Vehicles Above Threshold		% Above Threshold		Av Speed of speeders		Top Speed		Letters		
			Mon	Yr	Mon	Yr	Mon	Yr	Mon	Yr	Mon	Yr	Mon	Yr	Mon	NFA	In Processing
NS0203	Frost Hill	30	1	31	673	9,859	2	27	0.3%	0.3%	36.5	39.3	37	47	-	2	0
NS0204	Dairy Close	30	3	28	2,097	8,899	9	38	0.4%	0.4%	37.0	39.5	39	49	2	4	3
NS0205	Mendip Road	30	0	8	0	178	0	5	-	2.8%	-	38.0	-	40	-		0
NS0206	Claverham Road	30	0	20	0	1,546	0	16	-	1.0%	-	40.5	-	54	-		0
NS0207	Henley Lane	30	1	1	430	430	0	0	0.0%	0.0%	40.0	40.0	40	40	-	0	0
NS0210	North End - Red brick house	40	0	21	0	4,493	0	8	-	0.2%	-	47.3	-	55	-		0
Total			5	109	3,200	25,405	11	94	0.3%	0.4%			40	55	2	6	3

Somerset West

Sessions Between 01/11/2019 to 30/10/2020

Community SpeedWatch Monthly Report Sessions up to October 2020

Sessions Between 01/11/2019 to 30/10/2020

Axbridge

Site Code	Site Location	Speed Limit	Sessions		Vehicles		Vehicles Above Threshold		% Above Threshold		Av Speed of speeders		Top Speed		Letters		
			Mon	Yr	Mon	Yr	Mon	Yr	Mon	Yr	Mon	Yr	Mon	Yr	Mon	NFA	In Processing
WS4103	St Mary's Street (Lower Frys)	20	0	2	0	232	0	11	-	4.7%	-	27.8	-	32	-		0
	Total		0	2		232	0	11	-	4.7%			-	32	-		0

Berrow

Site Code	Site Location	Speed Limit	Sessions		Vehicles		Vehicles Above Threshold		% Above Threshold		Av Speed of speeders		Top Speed		Letters		
			Mon	Yr	Mon	Yr	Mon	Yr	Mon	Yr	Mon	Yr	Mon	Yr	Mon	NFA	In Processing
WS0201	Coast Road / Hurn Lane Jnct	30	3	49	1,065	10,132	38	244	3.6%	2.4%	39.4	43.1	45	52	-	16	22
WS0202	Coast Road	30	0	4	0	407	0	11	-	2.7%	-	38.2	-	41	-		0
	Total		3	53	1,065	10,539	38	255	3.6%	2.4%			45	52	-	16	22

Bishops Hull

Site Code	Site Location	Speed Limit	Sessions		Vehicles		Vehicles Above Threshold		% Above Threshold		Av Speed of speeders		Top Speed		Letters		
			Mon	Yr	Mon	Yr	Mon	Yr	Mon	Yr	Mon	Yr	Mon	Yr	Mon	NFA	In Processing
WS2901	Bishops Hull Road	20	1	12	82	354	6	33	7.3%	9.3%	28.3	29.4	32	34	2	4	0
WS2904	Silk Mill Road	30	2	30	1,437	9,470	69	396	4.8%	4.2%	40.4	42.2	47	57	-	16	53
	Total		3	42	1,519	9,824	75	429	4.9%	4.4%			47	57	2	20	53

Community SpeedWatch Monthly Report Sessions up to October 2020

Sessions Between 01/11/2019 to 30/10/2020

Blue Anchor

Site Code	Site Location	Speed Limit	Sessions		Vehicles		Vehicles Above Threshold		% Above Threshold		Av Speed of speeders		Top Speed		Letters		
			Mon	Yr	Mon	Yr	Mon	Yr	Mon	Yr	Mon	Yr	Mon	Yr	Mon	NFA	In Processing
WS6201	B3191 (Grove Lane)	30	0	6	0	292	0	8	-	2.7%	-	34.8	-	38	-		0
WS6202	B3191 (Grove House)	30	3	22	149	1,291	10	66	6.7%	5.1%	38.0	36.7	40	41	5	2	3
	Total		3	28	149	1,583	10	74	6.7%	4.5%			40	41	5	2	3

Brent Knoll

Site Code	Site Location	Speed Limit	Sessions		Vehicles		Vehicles Above Threshold		% Above Threshold		Av Speed of speeders		Top Speed		Letters		
			Mon	Yr	Mon	Yr	Mon	Yr	Mon	Yr	Mon	Yr	Mon	Yr	Mon	NFA	In Processing
WS0408	Ham Road (Ham Farm)	30	5	22	351	1,739	8	58	2.3%	3.3%	37.7	38.8	49	49	1	7	0
WS0409	Burton Road (Pink Thyme)	30	5	45	576	6,430	33	443	5.7%	6.9%	39.1	43.6	44	62	-	2	31
	Total		10	67	927	8,169	41	501	4.4%	6.1%			49	62	1	9	31

Community SpeedWatch Monthly Report Sessions up to October 2020

Sessions Between 01/11/2019 to 30/10/2020

Carhampton

Site Code	Site Location	Speed Limit	Sessions		Vehicles		Vehicles Above Threshold		% Above Threshold		Av Speed of speeders		Top Speed		Letters		
			Mon	Yr	Mon	Yr	Mon	Yr	Mon	Yr	Mon	Yr	Mon	Yr	Mon	NFA	In Processing
WS5801	A39 (Butchers Arms)	30	0	4	0	1,833	0	13	-	0.7%	-	35.5	-	37	-		0
WS5802	A39 (Chris Crackers Yard)	30	5	17	4,389	11,192	168	516	3.8%	4.6%	42.7	42.6	67	67	35	19	114
WS5803	A39 (Windsors Lane)	30	1	33	1,122	12,742	15	493	1.3%	3.9%	39.4	37.2	48	49	13	0	2
WS5804	A39 (Park Lane)	30	0	9	0	4,689	0	63	-	1.3%	-	39.1	-	50	-		0
	Total		6	63	5,511	30,456	181	1,085	3.3%	3.4%			67	67	48	19	116

Cheddar

Site Code	Site Location	Speed Limit	Sessions		Vehicles		Vehicles Above Threshold		% Above Threshold		Av Speed of speeders		Top Speed		Letters		
			Mon	Yr	Mon	Yr	Mon	Yr	Mon	Yr	Mon	Yr	Mon	Yr	Mon	NFA	In Processing
WS0104	Cheddar Cliffs	30	0	4	0	1,336	0	2	-	0.1%	-	36.5	-	45	-		0
WS0105	Tweentown	30	0	4	0	827	0	3	-	0.4%	-	41.7	-	46	-		0
WS0106	Upper New Road	30	0	11	0	3,369	0	79	-	2.3%	-	42.2	-	49	-		0
WS0107	Wideatts Road	30	1	8	663	2,747	3	29	0.5%	1.1%	37.5	39.5	38	42	2	1	0
WS0108	The Hayes	20	1	8	107	678	13	77	12.1%	11.4%	29.7	31.3	35	42	-	1	12
WS0109	A371 - Upper New Road	30	1	1	885	885	9	9	1.0%	1.0%	41.2	41.2	49	49	9	0	0
	Total		3	36	1,655	9,842	25	199	1.5%	2.0%			49	49	11	2	12

Community SpeedWatch Monthly Report Sessions up to October 2020

Sessions Between 01/11/2019 to 30/10/2020

Chipley

Site Code	Site Location	Speed Limit	Sessions		Vehicles		Vehicles Above Threshold		% Above Threshold		Av Speed of speeders		Top Speed		Letters		
			Mon	Yr	Mon	Yr	Mon	Yr	Mon	Yr	Mon	Yr	Mon	Yr	Mon	NFA	In Processing
WS0701	Chipley Rosemary Cottage	30	0	7	0	263	0	10	-	3.8%	-	36.8	-	42	-		0
	Total		0	7		263	0	10	-	3.8%			-	42	-		0

Corfe

Site Code	Site Location	Speed Limit	Sessions		Vehicles		Vehicles Above Threshold		% Above Threshold		Av Speed of speeders		Top Speed		Letters		
			Mon	Yr	Mon	Yr	Mon	Yr	Mon	Yr	Mon	Yr	Mon	Yr	Mon	NFA	In Processing
WS0801	B3170 (Wembury House)	30	5	20	1,104	3,748	49	152	4.4%	4.1%	42.1	43.4	53	53	23	10	16
WS0802	B3170 (Pickeridge Cottage)	30	2	6	469	1,269	11	39	2.3%	3.1%	41.0	41.5	45	46	4	7	0
	Total		7	26	1,573	5,017	60	191	3.8%	3.8%			53	53	27	17	16

East Lyng

Site Code	Site Location	Speed Limit	Sessions		Vehicles		Vehicles Above Threshold		% Above Threshold		Av Speed of speeders		Top Speed		Letters		
			Mon	Yr	Mon	Yr	Mon	Yr	Mon	Yr	Mon	Yr	Mon	Yr	Mon	NFA	In Processing
WS0902	Orchard View	30	3	34	995	3,697	31	151	3.1%	4.1%	42.0	47.0	49	66	-	5	26
WS0904	Herons Ghyll	30	0	13	0	1,911	0	31	-	1.6%	-	40.5	-	45	-		0
	Total		3	47	995	5,608	31	182	3.1%	3.2%			49	66	-	5	26

Community SpeedWatch Monthly Report Sessions up to October 2020

Sessions Between 01/11/2019 to 30/10/2020

Edington and Chilton Polde

Site Code	Site Location	Speed Limit	Sessions		Vehicles		Vehicles Above Threshold		% Above Threshold		Av Speed of speeders		Top Speed		Letters		
			Mon	Yr	Mon	Yr	Mon	Yr	Mon	Yr	Mon	Yr	Mon	Yr	Mon	NFA	In Processing
WS5501	Broadway (Gwilliams Shop)	30	0	6	0	125	0	0	-	0.0%	-	30.0	-	30	-		0
	Total		0	6		125	0	0	-	0.0%			-	30	-		0

Enmore

Site Code	Site Location	Speed Limit	Sessions		Vehicles		Vehicles Above Threshold		% Above Threshold		Av Speed of speeders		Top Speed		Letters		
			Mon	Yr	Mon	Yr	Mon	Yr	Mon	Yr	Mon	Yr	Mon	Yr	Mon	NFA	In Processing
WS1001	Lexworthy Farm	30	2	19	232	857	21	78	9.1%	9.1%	41.4	43.7	47	60	10	2	9
	Total		2	19	232	857	21	78	9.1%	9.1%			47	60	10	2	9

Exton and Bridgetown

Site Code	Site Location	Speed Limit	Sessions		Vehicles		Vehicles Above Threshold		% Above Threshold		Av Speed of speeders		Top Speed		Letters		
			Mon	Yr	Mon	Yr	Mon	Yr	Mon	Yr	Mon	Yr	Mon	Yr	Mon	NFA	In Processing
WS4502	A396 (Badgers Holt)	30	0	4	0	212	0	9	-	4.2%	-	37.3	-	41	-		0
	Total		0	4		212	0	9	-	4.2%			-	41	-		0

Community SpeedWatch Monthly Report Sessions up to October 2020

Sessions Between 01/11/2019 to 30/10/2020

Hamp (Bridgwater)

Site Code	Site Location	Speed Limit	Sessions		Vehicles		Vehicles Above Threshold		% Above Threshold		Av Speed of speeders		Top Speed		Letters		
			Mon	Yr	Mon	Yr	Mon	Yr	Mon	Yr	Mon	Yr	Mon	Yr	Mon	NFA	In Processing
WS5701	Wills Road	30	0	5	0	360	0	32	-	8.9%	-	39.8	-	45	-		0
	Total		0	5		360	0	32	-	8.9%			-	45	-		0

Hillcommon & Oake

Site Code	Site Location	Speed Limit	Sessions		Vehicles		Vehicles Above Threshold		% Above Threshold		Av Speed of speeders		Top Speed		Letters		
			Mon	Yr	Mon	Yr	Mon	Yr	Mon	Yr	Mon	Yr	Mon	Yr	Mon	NFA	In Processing
WS1101	Dayyem	30	0	6	0	598	0	13	-	2.2%	-	41.5	-	48	-		0
WS1103	Oake School	30	0	2	0	434	0	2	-	0.5%	-	24.0	-	28	-		0
	Total		0	8		1,032	0	15	-	1.5%			-	48	-		0

Holway

Site Code	Site Location	Speed Limit	Sessions		Vehicles		Vehicles Above Threshold		% Above Threshold		Av Speed of speeders		Top Speed		Letters		
			Mon	Yr	Mon	Yr	Mon	Yr	Mon	Yr	Mon	Yr	Mon	Yr	Mon	NFA	In Processing
WS1201	Chestnut Drive	30	1	12	583	3,425	8	43	1.4%	1.3%	38.3	41.9	41	53	5	3	0
WS1205	Holway Road	30	1	9	149	1,116	4	21	2.7%	1.9%	36.5	39.3	37	44	-	0	4
	Total		2	21	732	4,541	12	64	1.6%	1.4%			41	53	5	3	4

Community SpeedWatch Monthly Report Sessions up to October 2020

Sessions Between 01/11/2019 to 30/10/2020

Holywell Lake

Site Code	Site Location	Speed Limit	Sessions		Vehicles		Vehicles Above Threshold		% Above Threshold		Av Speed of speeders		Top Speed		Letters		
			Mon	Yr	Mon	Yr	Mon	Yr	Mon	Yr	Mon	Yr	Mon	Yr	Mon	NFA	In Processing
WS3101	The Holloway (Gorsty Hayes)	30	1	5	113	113	1	1	0.9%	0.9%	35.0	35.0	35	35	1	0	0
	Total		1	5	113	113	1	1	0.9%	0.9%			35	35	1	0	0

Kingston St Mary

Site Code	Site Location	Speed Limit	Sessions		Vehicles		Vehicles Above Threshold		% Above Threshold		Av Speed of speeders		Top Speed		Letters		
			Mon	Yr	Mon	Yr	Mon	Yr	Mon	Yr	Mon	Yr	Mon	Yr	Mon	NFA	In Processing
WS4402	Hob Lane	30	0	28	0	463	0	19	-	4.1%	-	38.0	-	40	-		0
WS4403	Kingston Road	30	0	6	0	197	0	2	-	1.0%	-	36.5	-	37	-		0
	Total		0	34		660	0	21	-	3.2%			-	40	-		0

Langford Budville

Site Code	Site Location	Speed Limit	Sessions		Vehicles		Vehicles Above Threshold		% Above Threshold		Av Speed of speeders		Top Speed		Letters		
			Mon	Yr	Mon	Yr	Mon	Yr	Mon	Yr	Mon	Yr	Mon	Yr	Mon	NFA	In Processing
WS5101	Courtlands	30	1	5	100	100	1	1	1.0%	1.0%	37.0	37.0	37	37	1	0	0
WS5102	Hillside	30	1	46	93	1,601	12	256	12.9%	16.0%	40.2	45.4	45	60	-	1	11
	Total		2	51	193	1,701	13	257	6.7%	15.1%			45	60	1	1	11

Community SpeedWatch Monthly Report Sessions up to October 2020

Sessions Between 01/11/2019 to 30/10/2020

Mark

Site Code	Site Location	Speed Limit	Sessions		Vehicles		Vehicles Above Threshold		% Above Threshold		Av Speed of speeders		Top Speed		Letters		
			Mon	Yr	Mon	Yr	Mon	Yr	Mon	Yr	Mon	Yr	Mon	Yr	Mon	NFA	In Processing
WS1501	B3139 (Traffic Island)	30	1	12	348	1,206	13	57	3.7%	4.7%	40.0	40.2	45	45	8	3	2
WS1502	Harnel	30	1	19	201	760	8	18	4.0%	2.4%	40.5	40.3	47	47	-	2	6
WS1503	Laurel Farm	30	0	11	0	942	0	17	-	1.8%	-	37.0	-	41	-	-	0
WS1504	Mark First School	30	1	10	265	1,076	12	44	4.5%	4.1%	39.0	41.2	42	47	10	1	1
WS1505	Over-the-Way	30	3	41	856	6,132	19	243	2.2%	4.0%	41.4	43.9	49	57	1	4	14
WS1508	Uplands	30	0	16	0	1,955	0	49	-	2.5%	-	40.6	-	47	-	-	0
Total			6	109	1,670	12,071	52	428	3.1%	3.5%			49	57	19	10	23

Milverton

Site Code	Site Location	Speed Limit	Sessions		Vehicles		Vehicles Above Threshold		% Above Threshold		Av Speed of speeders		Top Speed		Letters		
			Mon	Yr	Mon	Yr	Mon	Yr	Mon	Yr	Mon	Yr	Mon	Yr	Mon	NFA	In Processing
WS1602	Sand Street	20	3	47	789	3,039	33	151	4.2%	5.0%	29.3	32.3	37	54	16	10	7
WS1604	Butts Way - Cricket field	20	2	32	104	493	3	23	2.9%	4.7%	28.0	28.7	33	34	-	2	1
WS1605	Wood Street	20	2	51	125	1,345	12	120	9.6%	8.9%	30.3	32.5	36	39	5	4	3
WS1606	Station Road	20	2	67	94	4,325	3	176	3.2%	4.1%	25.0	35.1	29	50	1	2	0
WS1607	Fore Street	20	0	6	0	568	0	3	-	0.5%	-	26.5	-	31	-	-	0
Total			9	203	1,112	9,770	50	473	4.5%	4.8%			37	54	22	18	11

Community SpeedWatch Monthly Report Sessions up to October 2020

Sessions Between 01/11/2019 to 30/10/2020

Monkton Heathfield

Site Code	Site Location	Speed Limit	Sessions		Vehicles		Vehicles Above Threshold		% Above Threshold		Av Speed of speeders		Top Speed		Letters		
			Mon	Yr	Mon	Yr	Mon	Yr	Mon	Yr	Mon	Yr	Mon	Yr	Mon	NFA	In Processing
WS3401	A3259	30	0	16	0	2,582	0	93	-	3.6%	-	43.3	-	60	-		0
	Total		0	16		2,582	0	93	-	3.6%			-	60	-		0

North Curry

Site Code	Site Location	Speed Limit	Sessions		Vehicles		Vehicles Above Threshold		% Above Threshold		Av Speed of speeders		Top Speed		Letters		
			Mon	Yr	Mon	Yr	Mon	Yr	Mon	Yr	Mon	Yr	Mon	Yr	Mon	NFA	In Processing
WS3301	Windmill Hill	30	0	9	0	209	0	11	-	5.3%	-	38.7	-	42	-		0
WS3302	A378	40	0	8	0	500	0	56	-	11.2%	-	54.4	-	63	-		0
WS3304	Stoke Road (Pury Street Farm)	30	0	3	0	237	0	10	-	4.2%	-	38.5	-	41	-		0
WS3305	Paynes Farm	30	1	6	100	134	3	4	3.0%	3.0%	37.5	39.3	39	43	-	1	2
WS3306	Windmill Hill (Independent Baptist Church	30	1	8	100	683	9	90	9.0%	13.2%	42.7	44.0	48	52	7	1	1
	Total		2	34	200	1,763	12	171	6.0%	9.7%			48	63	7	2	3

Porlock

Site Code	Site Location	Speed Limit	Sessions		Vehicles		Vehicles Above Threshold		% Above Threshold		Av Speed of speeders		Top Speed		Letters		
			Mon	Yr	Mon	Yr	Mon	Yr	Mon	Yr	Mon	Yr	Mon	Yr	Mon	NFA	In Processing
WS5901	High Street	20	0	5	0	855	0	6	-	0.7%	-	27.3	-	30	-		0
	Total		0	5		855	0	6	-	0.7%			-	30	-		0

Community SpeedWatch Monthly Report Sessions up to October 2020

Sessions Between 01/11/2019 to 30/10/2020

Shipham

Site Code	Site Location	Speed Limit	Sessions		Vehicles		Vehicles Above Threshold		% Above Threshold		Av Speed of speeders		Top Speed		Letters		
			Mon	Yr	Mon	Yr	Mon	Yr	Mon	Yr	Mon	Yr	Mon	Yr	Mon	NFA	In Processing
WS1902	The Square	30	4	35	904	1,944	30	56	3.3%	2.9%	39.5	41.6	43	50	22	5	3
WS1905	Turnpike Road (North Down Lane)	30	1	10	276	562	1	6	0.4%	1.1%	36.0	38.2	36	41	1	0	0
Total			5	45	1,180	2,506	31	62	2.6%	2.5%			43	50	23	5	3

Staplegrave

Site Code	Site Location	Speed Limit	Sessions		Vehicles		Vehicles Above Threshold		% Above Threshold		Av Speed of speeders		Top Speed		Letters		
			Mon	Yr	Mon	Yr	Mon	Yr	Mon	Yr	Mon	Yr	Mon	Yr	Mon	NFA	In Processing
WS2101	Manor Road	30	3	34	1,240	5,503	4	8	0.3%	0.1%	36.7	37.6	44	44	1	1	2
WS2102	Staplegrave Road	30	2	44	2,806	27,924	4	40	0.1%	0.1%	36.0	36.6	36	41	-	4	0
Total			5	78	4,046	33,427	8	48	0.2%	0.1%			44	44	1	5	2

Stogursey

Site Code	Site Location	Speed Limit	Sessions		Vehicles		Vehicles Above Threshold		% Above Threshold		Av Speed of speeders		Top Speed		Letters		
			Mon	Yr	Mon	Yr	Mon	Yr	Mon	Yr	Mon	Yr	Mon	Yr	Mon	NFA	In Processing
WS5202	Forge Corner (Burton)	30	2	10	249	749	14	40	5.6%	5.3%	40.6	40.4	45	45	12	0	2
Total			2	10	249	749	14	40	5.6%	5.3%			45	45	12	0	2

Community SpeedWatch Monthly Report Sessions up to October 2020

Sessions Between 01/11/2019 to 30/10/2020

Stoke St Gregory

Site Code	Site Location	Speed Limit	Sessions		Vehicles		Vehicles Above Threshold		% Above Threshold		Av Speed of speeders		Top Speed		Letters		
			Mon	Yr	Mon	Yr	Mon	Yr	Mon	Yr	Mon	Yr	Mon	Yr	Mon	NFA	In Processing
WS6101	Griggs Hill (Baptist Church)	30	0	1	0	78	0	2	-	2.6%	-	31.5	-	32	-		0
WS6102	Stoke Road (Cuppins Farm)	40	1	5	102	558	3	11	2.9%	2.0%	45.3	45.1	49	52	1	2	0
WS6103	Stoke Road (Thistle Down)	40	1	4	77	445	3	8	3.9%	1.8%	44.3	44.8	48	50	-	2	1
Total			2	10	179	1,081	6	21	3.4%	1.9%			49	52	1	4	1

Trull

Site Code	Site Location	Speed Limit	Sessions		Vehicles		Vehicles Above Threshold		% Above Threshold		Av Speed of speeders		Top Speed		Letters		
			Mon	Yr	Mon	Yr	Mon	Yr	Mon	Yr	Mon	Yr	Mon	Yr	Mon	NFA	In Processing
WS3601	Honiton Road - Opp Furlong Green	30	1	2	121	325	2	13	1.7%	4.0%	38.5	41.4	41	48	2	0	0
WS3603	Honiton Road (Car Garage)	30	1	1	409	409	1	1	0.2%	0.2%	36.0	36.0	36	36	-	1	0
Total			2	3	530	734	3	14	0.6%	1.9%			41	48	2	1	0

Wellington Rural

Site Code	Site Location	Speed Limit	Sessions		Vehicles		Vehicles Above Threshold		% Above Threshold		Av Speed of speeders		Top Speed		Letters		
			Mon	Yr	Mon	Yr	Mon	Yr	Mon	Yr	Mon	Yr	Mon	Yr	Mon	NFA	In Processing
WS2801	Ford Street	30	1	30	101	1,407	6	222	5.9%	15.8%	42.8	44.0	45	52	6	0	0
WS2802	Ford Street (Middle Ford Farm)	30	1	10	83	805	10	96	12.0%	11.9%	41.0	42.9	49	53	6	0	4
Total			2	40	184	2,212	16	318	8.7%	14.3%			49	53	12	0	4

Community SpeedWatch Monthly Report Sessions up to October 2020

Sessions Between 01/11/2019 to 30/10/2020

Wembdon

Site Code	Site Location	Speed Limit	Sessions		Vehicles		Vehicles Above Threshold		% Above Threshold		Av Speed of speeders		Top Speed		Letters		
			Mon	Yr	Mon	Yr	Mon	Yr	Mon	Yr	Mon	Yr	Mon	Yr	Mon	NFA	In Processing
WS2305	Wembdon Rise (Inwood Road)	30	0	5	0	871	0	7	-	0.8%	-	38.5	-	43	-		0
WS2306	Wembdon Hill (No. 89)	30	0	2	0	198	0	3	-	1.5%	-	39.5	-	43	-		0
WS2307	Wembdon Hill (no. 84)	30	0	4	0	325	0	8	-	2.5%	-	37.5	-	39	-		0
Total			0	11		1,394	0	18	-	1.3%			-	43	-		0

Williton

Site Code	Site Location	Speed Limit	Sessions		Vehicles		Vehicles Above Threshold		% Above Threshold		Av Speed of speeders		Top Speed		Letters		
			Mon	Yr	Mon	Yr	Mon	Yr	Mon	Yr	Mon	Yr	Mon	Yr	Mon	NFA	In Processing
WS2502	Tower Hill	30	0	1	0	140	0	1	-	0.7%	-	38.0	-	38	-		0
WS2508	Tower Hill	30	0	1	0	215	0	1	-	0.5%	-	38.0	-	38	-		0
Total			0	2		355	0	2	-	0.6%			-	38	-		0

Woolavington

Site Code	Site Location	Speed Limit	Sessions		Vehicles		Vehicles Above Threshold		% Above Threshold		Av Speed of speeders		Top Speed		Letters		
			Mon	Yr	Mon	Yr	Mon	Yr	Mon	Yr	Mon	Yr	Mon	Yr	Mon	NFA	In Processing
WS2701	Prince of Wales	30	0	16	0	1,135	0	19	-	1.7%	-	39.4	-	50	-		0
Total			0	16		1,135	0	19	-	1.7%			-	50	-		0

Community SpeedWatch Monthly Report Sessions up to October 2020

South Gloucestershire

Sessions Between 03/11/2019 to 31/10/2020

Chipping Sodbury East

Site Code	Site Location	Speed Limit	Sessions		Vehicles		Vehicles Above Threshold		% Above Threshold		Av Speed of speeders		Top Speed		Letters		
			Mon	Yr	Mon	Yr	Mon	Yr	Mon	Yr	Mon	Yr	Mon	Yr	Mon	NFA	In Processing
SG0202	St Johns Way - Lamp post 16	30	0	23	0	3,997	0	196	-	4.9%	-	44.5	-	52	-		0
	Total		0	23		3,997	0	196	-	4.9%			-	52	-		0

Codrington

Site Code	Site Location	Speed Limit	Sessions		Vehicles		Vehicles Above Threshold		% Above Threshold		Av Speed of speeders		Top Speed		Letters		
			Mon	Yr	Mon	Yr	Mon	Yr	Mon	Yr	Mon	Yr	Mon	Yr	Mon	NFA	In Processing
SG0501	B4465	40	1	25	235	3,486	38	292	16.2%	8.4%	53.6	57.6	69	71	36	0	2
	Total		1	25	235	3,486	38	292	16.2%	8.4%			69	71	36	0	2

Easter Compton

Site Code	Site Location	Speed Limit	Sessions		Vehicles		Vehicles Above Threshold		% Above Threshold		Av Speed of speeders		Top Speed		Letters		
			Mon	Yr	Mon	Yr	Mon	Yr	Mon	Yr	Mon	Yr	Mon	Yr	Mon	NFA	In Processing
SG0804	Main Road - Prospect Close	20	0	10	0	2,761	0	39	-	1.4%	-	34.4	-	43	-		0
	Total		0	10		2,761	0	39	-	1.4%			-	43	-		0

Community SpeedWatch Monthly Report Sessions up to October 2020

Staple Hill

Site Code	Site Location	Speed Limit	Sessions		Vehicles		Vehicles Above Threshold		% Above Threshold		Av Speed of speeders		Top Speed		Letters		
			Mon	Yr	Mon	Yr	Mon	Yr	Mon	Yr	Mon	Yr	Mon	Yr	Mon	NFA	In Processing
SG3101	Park Road	20	21	43	9,774	17,293	1,096	2,444	11.2%	14.1%	33.2	35.9	50	56	231	183	682
	Total		21	43	9,774	17,293	1,096	2,444	11.2%	14.1%			50	56	231	183	682

Thornbury

Site Code	Site Location	Speed Limit	Sessions		Vehicles		Vehicles Above Threshold		% Above Threshold		Av Speed of speeders		Top Speed		Letters		
			Mon	Yr	Mon	Yr	Mon	Yr	Mon	Yr	Mon	Yr	Mon	Yr	Mon	NFA	In Processing
SG1602	Gillingstool School	30	0	8	0	337	0	5	-	1.5%	-	37.0	-	38	-		0
SG1604	Castle Street	20	6	47	1,222	6,384	136	519	11.1%	8.1%	30.0	31.9	35	45	32	26	78
SG1605	Gloucester Road - Nos.28/30 The Elms	30	0	1	0	441	0	7	-	1.6%	-	38.3	-	41	-		0
SG1607	Gloucester Road - The Anchor	30	3	64	1,430	11,536	42	252	2.9%	2.2%	40.3	42.6	49	51	15	9	18
SG1610	Pearce Close	30	1	30	386	5,599	13	154	3.4%	2.8%	38.1	43.1	42	59	8	2	3
SG1611	Morton Way - Cheviot Dr & Cumbria Cl	40	0	13	0	1,475	0	53	-	3.6%	-	50.5	-	55	-		0
SG1612	Morton Way - Primrose Dr & Osprey Pk	40	1	7	500	772	13	23	2.6%	3.0%	51.0	51.1	61	61	10	1	2
	Total		11	170	3,538	26,544	202	1,013	5.7%	3.7%			61	61	65	38	101

Tytherington

Site Code	Site Location	Speed Limit	Sessions		Vehicles		Vehicles Above Threshold		% Above Threshold		Av Speed of speeders		Top Speed		Letters		
			Mon	Yr	Mon	Yr	Mon	Yr	Mon	Yr	Mon	Yr	Mon	Yr	Mon	NFA	In Processing
SG2303	Duck Street - Sidcott Lane	30	0	14	0	84	0	3	-	3.6%	-	31.5	-	37	-		0
SG2304	Stowell Hill Road	30	3	71	732	2,033	29	95	4.0%	4.7%	40.4	42.2	46	50	6	9	14
	Total		3	85	732	2,117	29	98	4.0%	4.6%			46	50	6	9	14

Community SpeedWatch Monthly Report Sessions up to October 2020

Wickwar

Site Code	Site Location	Speed Limit	Sessions		Vehicles		Vehicles Above Threshold		% Above Threshold		Av Speed of speeders		Top Speed		Letters		
			Mon	Yr	Mon	Yr	Mon	Yr	Mon	Yr	Mon	Yr	Mon	Yr	Mon	NFA	In Processing
SG1801	Station Road	30	0	3	0	253	0	11	-	4.3%	-	41.5	-	50	-		0
SG1803	Downs Road	30	3	47	1,311	8,187	100	408	7.6%	5.0%	43.1	42.9	51	51	19	12	69
SG1804	Sodbury Road - South Farm	30	4	32	2,055	8,642	38	221	1.8%	2.6%	41.6	40.9	50	50	21	7	10
SG1805	Sodbury Road - Youth Club	30	0	16	0	260	0	6	-	2.3%	-	38.0	-	39	-		0
	Total		7	98	3,366	17,342	135	646	4.0%	3.7%			51	51	40	19	79

Winterbourne Down

Site Code	Site Location	Speed Limit	Sessions		Vehicles		Vehicles Above Threshold		% Above Threshold		Av Speed of speeders		Top Speed		Letters		
			Mon	Yr	Mon	Yr	Mon	Yr	Mon	Yr	Mon	Yr	Mon	Yr	Mon	NFA	In Processing
SG2803	Dragon Road - outside 139	30	7	49	1,381	3,846	66	146	4.8%	3.8%	44.5	44.8	65	65	30	20	16
	Total		7	49	1,381	3,846	66	146	4.8%	3.8%			65	65	30	20	16

South Somerset

Sessions Between 01/11/2019 to 30/10/2020

Aller

Site Code	Site Location	Speed Limit	Sessions		Vehicles		Vehicles Above Threshold		% Above Threshold		Av Speed of speeders		Top Speed		Letters		
			Mon	Yr	Mon	Yr	Mon	Yr	Mon	Yr	Mon	Yr	Mon	Yr	Mon	NFA	In Processing
SS0101	Sorn House	30	3	41	1,144	2,816	39	95	3.4%	3.4%	43.2	44.7	52	64	31	2	6
	Total		3	41	1,144	2,816	39	95	3.4%	3.4%			52	64	31	2	6

Community SpeedWatch Monthly Report Sessions up to October 2020

Sessions Between 01/11/2019 to 30/10/2020

Barton St David

Site Code	Site Location	Speed Limit	Sessions		Vehicles		Vehicles Above Threshold		% Above Threshold		Av Speed of speeders		Top Speed		Letters		
			Mon	Yr	Mon	Yr	Mon	Yr	Mon	Yr	Mon	Yr	Mon	Yr	Mon	NFA	In Processing
SS4101	Barton Road	30	1	8	104	959	10	88	9.6%	9.2%	39.0	41.0	44	47	9	0	1
SS4102	High Lane	30	0	6	0	569	0	4	-	0.7%	-	32.3	-	39	-		0
	Total		1	14	104	1,528	10	92	9.6%	6.0%			44	47	9	0	1

Brympton

Site Code	Site Location	Speed Limit	Sessions		Vehicles		Vehicles Above Threshold		% Above Threshold		Av Speed of speeders		Top Speed		Letters		
			Mon	Yr	Mon	Yr	Mon	Yr	Mon	Yr	Mon	Yr	Mon	Yr	Mon	NFA	In Processing
SS0302	Bluebell Rd	30	0	6	0	392	0	9	-	2.3%	-	41.0	-	49	-		0
SS0303	Junc. Stourton Way/Long Mead	30	0	3	0	240	0	4	-	1.7%	-	37.5	-	39	-		0
SS0304	Larkhill Rd	30	0	9	0	251	0	2	-	0.8%	-	39.5	-	42	-		0
	Total		0	18		883	0	15	-	1.7%			-	49	-		0

Community SpeedWatch Monthly Report Sessions up to October 2020

Sessions Between 01/11/2019 to 30/10/2020

Charlton Horethorne

Site Code	Site Location	Speed Limit	Sessions		Vehicles		Vehicles Above Threshold		% Above Threshold		Av Speed of speeders		Top Speed		Letters		
			Mon	Yr	Mon	Yr	Mon	Yr	Mon	Yr	Mon	Yr	Mon	Yr	Mon	NFA	In Processing
SS0501	Cathill Lane	30	2	54	690	4,439	17	195	2.5%	4.4%	40.2	41.2	45	49	15	0	2
SS0507	Milbourne Port Road (40mph)	40	0	11	0	153	0	3	-	2.0%	-	49.3	-	53	-		0
SS0508	Milbourne Port Road (30 mph)	30	0	12	0	287	0	4	-	1.4%	-	36.8	-	42	-		0
Total			2	77	690	4,879	17	202	2.5%	4.1%			45	53	15	0	2

Charlton Mackrell

Site Code	Site Location	Speed Limit	Sessions		Vehicles		Vehicles Above Threshold		% Above Threshold		Av Speed of speeders		Top Speed		Letters		
			Mon	Yr	Mon	Yr	Mon	Yr	Mon	Yr	Mon	Yr	Mon	Yr	Mon	NFA	In Processing
SS0401	Kingweston Rd - "Wymbra"	30	3	13	859	859	40	40	4.7%	4.7%	42.0	42.0	49	49	34	3	3
Total			3	13	859	859	40	40	4.7%	4.7%			49	49	34	3	3

Community SpeedWatch Monthly Report Sessions up to October 2020

Sessions Between 01/11/2019 to 30/10/2020

Curry Rivel

Site Code	Site Location	Speed Limit	Sessions		Vehicles		Vehicles Above Threshold		% Above Threshold		Av Speed of speeders		Top Speed		Letters		
			Mon	Yr	Mon	Yr	Mon	Yr	Mon	Yr	Mon	Yr	Mon	Yr	Mon	NFA	In Processing
SS0801	Churchway	30	0	12	0	1,378	0	6	-	0.4%	-	36.0	-	39	-		0
SS0803	Lower Wiltown	30	1	2	197	197	9	9	4.6%	4.6%	39.0	39.0	43	43	5	1	3
SS0805	Honeylands - Junction with Abbey Close	30	1	4	61	248	0	5	0.0%	2.0%	30.0	34.3	30	37	-	0	0
SS0806	A378	30	0	22	0	2,683	0	10	-	0.4%	-	36.8	-	39	-		0
SS0809	A378 (Stanchester House)	40	0	2	0	530	0	8	-	1.5%	-	48.5	-	50	-		0
SS0811	A378 Entr. to Westfield Ln	30	0	8	0	406	0	26	-	6.4%	-	41.7	-	49	-		0
SS0812	A378 Ent to Westfield Ln Eastbound	40	0	7	0	339	0	17	-	5.0%	-	51.3	-	61	-		0
SS0813	B3168 'Tuggs Cottage' Lower Wiltown	40	0	6	0	435	0	15	-	3.4%	-	51.0	-	58	-		0
SS0814	Parsonage Place	30	1	16	590	3,297	4	27	0.7%	0.8%	37.7	39.0	39	42	4	0	0
SS0815	Townsend	30	1	15	529	2,686	1	37	0.2%	1.4%	37.0	40.1	37	48	1	0	0
SS0817	A378 (Southways)	40	1	9	459	1,106	15	19	3.3%	1.7%	49.4	49.4	53	53	12	0	3
	Total		5	103	1,836	13,305	29	179	1.6%	1.3%			53	61	22	1	6

East Chinnock

Site Code	Site Location	Speed Limit	Sessions		Vehicles		Vehicles Above Threshold		% Above Threshold		Av Speed of speeders		Top Speed		Letters		
			Mon	Yr	Mon	Yr	Mon	Yr	Mon	Yr	Mon	Yr	Mon	Yr	Mon	NFA	In Processing
SS3301	A30 - Village Hall	30	0	116	0	30,155	0	99	-	0.3%	-	42.0	-	55	-		0
	Total		0	116		30,155	0	99	-	0.3%			-	55	-		0

Community SpeedWatch Monthly Report Sessions up to October 2020

Sessions Between 01/11/2019 to 30/10/2020

Haselbury Plucknett

Site Code	Site Location	Speed Limit	Sessions		Vehicles		Vehicles Above Threshold		% Above Threshold		Av Speed of speeders		Top Speed		Letters		
			Mon	Yr	Mon	Yr	Mon	Yr	Mon	Yr	Mon	Yr	Mon	Yr	Mon	NFA	In Processing
SS0904	A3066 North St - Ent. to Leaze Farm	20	0	11	0	148	0	3	-	2.0%	-	29.0	-	31	-		0
SS0906	North Street	20	0	102	0	5,444	0	392	-	7.2%	-	36.4	-	52	-		0
SS0911	Swan Hill	20	0	2	0	224	0	6	-	2.7%	-	28.0	-	29	-		0
	Total		0	115		5,816	0	401	-	6.9%			-	52	-		0

Huish Episcopi

Site Code	Site Location	Speed Limit	Sessions		Vehicles		Vehicles Above Threshold		% Above Threshold		Av Speed of speeders		Top Speed		Letters		
			Mon	Yr	Mon	Yr	Mon	Yr	Mon	Yr	Mon	Yr	Mon	Yr	Mon	NFA	In Processing
SS3701	A372 (Field Road)	30	1	13	375	2,622	7	75	1.9%	2.9%	37.2	40.6	41	54	6	0	1
SS3702	A372 (opposite Rose & Crown)	30	0	19	0	1,956	0	36	-	1.8%	-	39.5	-	46	-		0
SS3703	A372 - Ducks Hill	40	0	3	0	110	0	0	-	0.0%	-	40.0	-	40	-		0
SS3705	A372 - Swallow Hill	30	4	26	1,388	4,639	15	121	1.1%	2.6%	41.3	42.5	49	55	10	2	3
SS3706	The Hill	30	0	5	0	398	0	3	-	0.8%	-	36.3	-	41	-		0
SS3707	A378 (Somerton Road)	30	0	15	0	4,319	0	51	-	1.2%	-	40.7	-	49	-		0
SS3708	B3153 (Picts Hill)	30	1	9	582	2,811	14	101	2.4%	3.6%	42.9	42.0	49	49	10	2	2
SS3709	A378 (Bow Wharfe)	20	2	3	1,172	1,692	28	49	2.4%	2.9%	27.8	29.0	32	35	22	1	5
SS3710	A378 (North Street)	20	1	2	343	963	10	23	2.9%	2.4%	27.5	28.7	29	32	8	0	2
	Total		9	95	3,860	19,510	74	459	1.9%	2.3%			49	55	56	5	13

Community SpeedWatch Monthly Report Sessions up to October 2020

Sessions Between 01/11/2019 to 30/10/2020

Long Load

Site Code	Site Location	Speed Limit	Sessions		Vehicles		Vehicles Above Threshold		% Above Threshold		Av Speed of speeders		Top Speed		Letters		
			Mon	Yr	Mon	Yr	Mon	Yr	Mon	Yr	Mon	Yr	Mon	Yr	Mon	NFA	In Processing
SS1302	B3165 - Crabtree Mead	30	0	18	0	732	0	12	-	1.6%	-	37.5	-	39	-		0
SS1303	B3165	30	0	25	0	1,050	0	11	-	1.0%	-	37.0	-	38	-		0
	Total		0	43		1,782	0	23	-	1.3%			-	39	-		0

Misterton

Site Code	Site Location	Speed Limit	Sessions		Vehicles		Vehicles Above Threshold		% Above Threshold		Av Speed of speeders		Top Speed		Letters		
			Mon	Yr	Mon	Yr	Mon	Yr	Mon	Yr	Mon	Yr	Mon	Yr	Mon	NFA	In Processing
SS1703	A356 Middle St - Opp Misterton School	20	1	1	408	408	15	15	3.7%	3.7%	30.1	30.1	40	40	-	10	5
	Total		1	1	408	408	15	15	3.7%	3.7%			40	40	-	10	5

North Cadbury & Galhampt

Site Code	Site Location	Speed Limit	Sessions		Vehicles		Vehicles Above Threshold		% Above Threshold		Av Speed of speeders		Top Speed		Letters		
			Mon	Yr	Mon	Yr	Mon	Yr	Mon	Yr	Mon	Yr	Mon	Yr	Mon	NFA	In Processing
SS3802	A359 (Galhampton)	40	2	9	644	1,353	17	31	2.6%	2.3%	50.0	52.8	53	60	3	5	9
SS3803	A359 (Galhampton)	40	0	2	0	437	0	4	-	0.9%	-	53.7	-	60	-		0
	Total		2	11	644	1,790	17	35	2.6%	2.0%			53	60	3	5	9

Community SpeedWatch Monthly Report Sessions up to October 2020

Sessions Between 01/11/2019 to 30/10/2020

North Cheriton

Site Code	Site Location	Speed Limit	Sessions		Vehicles		Vehicles Above Threshold		% Above Threshold		Av Speed of speeders		Top Speed		Letters		
			Mon	Yr	Mon	Yr	Mon	Yr	Mon	Yr	Mon	Yr	Mon	Yr	Mon	NFA	In Processing
SS2001	Outside Cheriton Hill House	30	0	5	0	99	0	23	-	23.2%	-	41.2	-	47	-		0
	Total		0	5		99	0	23	-	23.2%			-	47	-		0

North Perrott

Site Code	Site Location	Speed Limit	Sessions		Vehicles		Vehicles Above Threshold		% Above Threshold		Av Speed of speeders		Top Speed		Letters		
			Mon	Yr	Mon	Yr	Mon	Yr	Mon	Yr	Mon	Yr	Mon	Yr	Mon	NFA	In Processing
SS2101	New St Opp Manor Arms pub	30	1	6	135	451	1	3	0.7%	0.7%	37.0	36.5	37	41	-	1	0
SS2102	A3066 Junc New St/Back Lane	30	0	10	0	846	0	20	-	2.4%	-	39.1	-	46	-		0
SS2103	New St Opp Manor Farm House	30	0	12	0	360	0	9	-	2.5%	-	39.8	-	44	-		0
	Total		1	28	135	1,657	1	32	0.7%	1.9%			37	46	-	1	0

Puckington

Site Code	Site Location	Speed Limit	Sessions		Vehicles		Vehicles Above Threshold		% Above Threshold		Av Speed of speeders		Top Speed		Letters		
			Mon	Yr	Mon	Yr	Mon	Yr	Mon	Yr	Mon	Yr	Mon	Yr	Mon	NFA	In Processing
SS3201	B3168 - Junction with entrance to Church	30	4	36	538	2,808	18	92	3.3%	3.3%	36.7	39.7	40	51	11	3	4
SS3202	B3168 - Junction with Bradon Lane	30	1	34	156	1,947	2	35	1.3%	1.8%	37.5	37.9	38	42	2	0	0
	Total		5	70	694	4,755	20	127	2.9%	2.6%			40	51	13	3	4

Community SpeedWatch Monthly Report Sessions up to October 2020

Sessions Between 01/11/2019 to 30/10/2020

Somerton

Site Code	Site Location	Speed Limit	Sessions		Vehicles		Vehicles Above Threshold		% Above Threshold		Av Speed of speeders		Top Speed		Letters		
			Mon	Yr	Mon	Yr	Mon	Yr	Mon	Yr	Mon	Yr	Mon	Yr	Mon	NFA	In Processing
SS3901	Sutton Road (The Old Shoemaker)	20	0	20	0	1,015	0	86	-	8.5%	-	30.1	-	36	-		0
SS3902	Sutton Road (Tom Tits Lane)	20	7	86	761	7,099	66	519	8.7%	7.3%	28.8	31.0	33	37	33	2	31
SS3903	Sutton Road (Coval)	20	4	31	680	2,511	95	335	14.0%	13.3%	30.5	31.6	36	40	67	9	19
SS3904	Langport Road (No. 1 Pavement)	20	8	51	2,348	11,029	117	635	5.0%	5.8%	28.9	31.9	34	42	63	12	42
SS3905	B3153 (Berry Hehind)	30	1	3	527	1,113	0	3	0.0%	0.3%	30.0	33.5	30	37	-	0	0
SS3906	Etsome Terrace	30	0	1	0	71	0	1	-	1.4%	-	25.0	-	25	-		0
SS3907	Langport Road (Westholm Road)	30	0	15	0	6,142	0	137	-	2.2%	-	42.6	-	62	-		0
SS3908	Gassons Lane	20	3	23	339	2,427	14	137	4.1%	5.6%	27.5	31.1	30	40	7	2	5
SS3909	Langport Road (B3153)	30	1	8	179	2,099	3	27	1.7%	1.3%	40.0	40.3	44	49	3	0	0
SS3910	Cartway Lane	30	0	1	0	386	0	20	-	5.2%	-	39.6	-	50	-		0
SS3911	B3153 (Behind Berry/Little Lynch)	30	1	3	569	1,409	2	5	0.4%	0.4%	39.5	37.5	42	42	2	0	0
	Total		25	242	5,403	35,301	293	1,905	5.4%	5.0%			44	62	175	25	97

Wearne

Site Code	Site Location	Speed Limit	Sessions		Vehicles		Vehicles Above Threshold		% Above Threshold		Av Speed of speeders		Top Speed		Letters		
			Mon	Yr	Mon	Yr	Mon	Yr	Mon	Yr	Mon	Yr	Mon	Yr	Mon	NFA	In Processing
SS3601	The Croft	30	9	50	799	1,790	11	53	1.4%	3.0%	41.2	41.7	57	57	8	0	3
SS3603	White Hill (Wearne Farm)	30	1	10	70	163	0	0	0.0%	0.0%	30.0	30.0	30	30	-	0	0
SS3604	White Hill (Woodpeckers)	30	0	15	0	35	0	2	-	5.7%	-	39.0	-	42	-		0
	Total		10	75	869	1,988	11	55	1.3%	2.8%			57	57	8	0	3

Community SpeedWatch Monthly Report Sessions up to October 2020

Sessions Between 01/11/2019 to 30/10/2020

West Coker

Site Code	Site Location	Speed Limit	Sessions		Vehicles		Vehicles Above Threshold		% Above Threshold		Av Speed of speeders		Top Speed		Letters		
			Mon	Yr	Mon	Yr	Mon	Yr	Mon	Yr	Mon	Yr	Mon	Yr	Mon	NFA	In Processing
SS3501	High Street (A30 - no.42)	20	0	30	0	4,402	0	185	-	4.2%	-	30.5	-	37	-		0
SS3502	High Strret (A30 - Long Orchard)	20	0	43	0	6,388	0	223	-	3.5%	-	29.8	-	36	-		0
SS3504	East Street	20	0	6	0	503	0	35	-	7.0%	-	29.7	-	36	-		0
SS3505	A30 High Street (Manor Farm)	20	1	48	253	6,824	12	411	4.7%	6.0%	29.3	32.1	36	40	7	2	3
SS3506	A30 High Street (Churlands Close)	20	0	7	0	715	0	15	-	2.1%	-	31.5	-	37	-		0
	Total		1	134	253	18,832	12	869	4.7%	4.6%			36	40	7	2	3