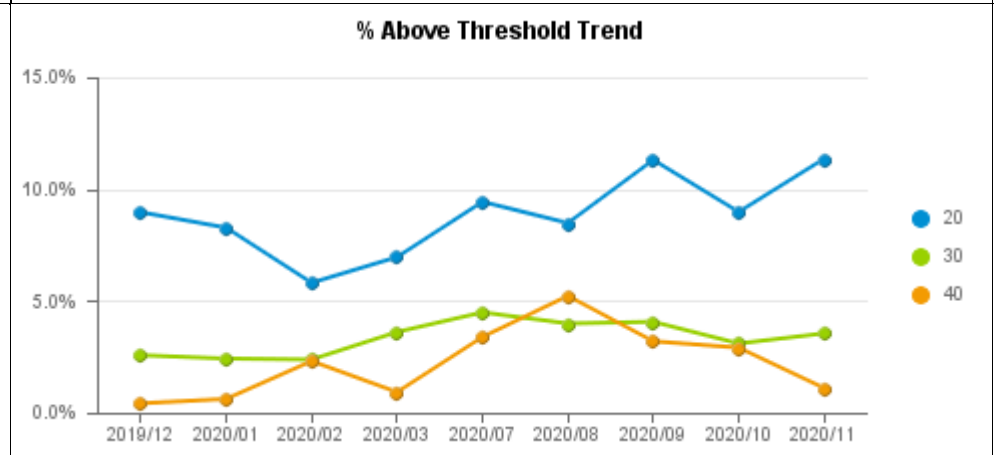
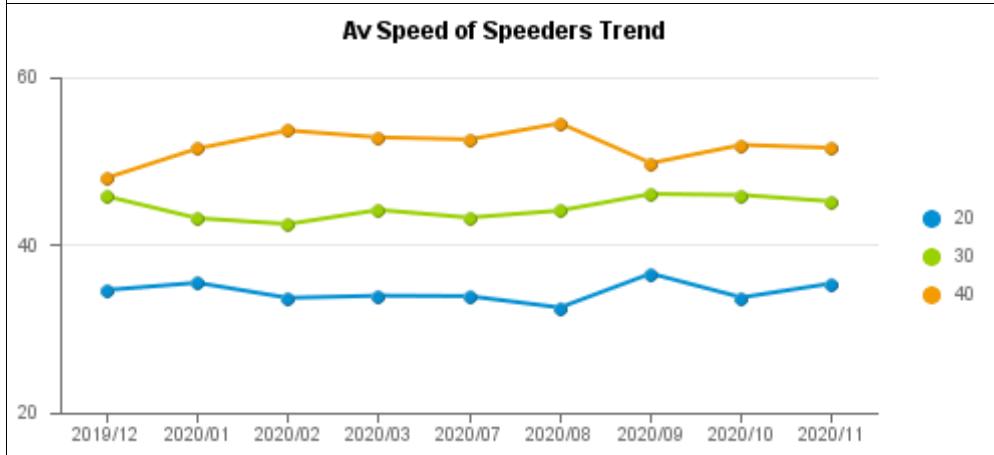
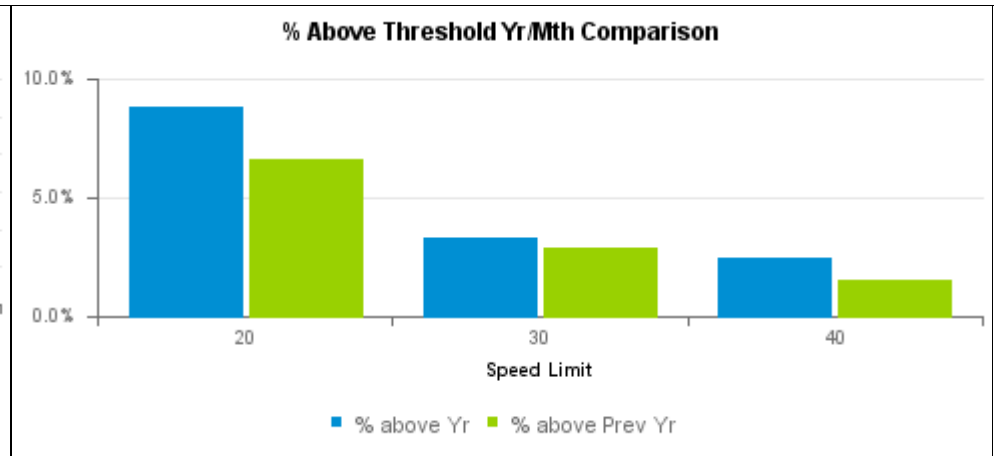
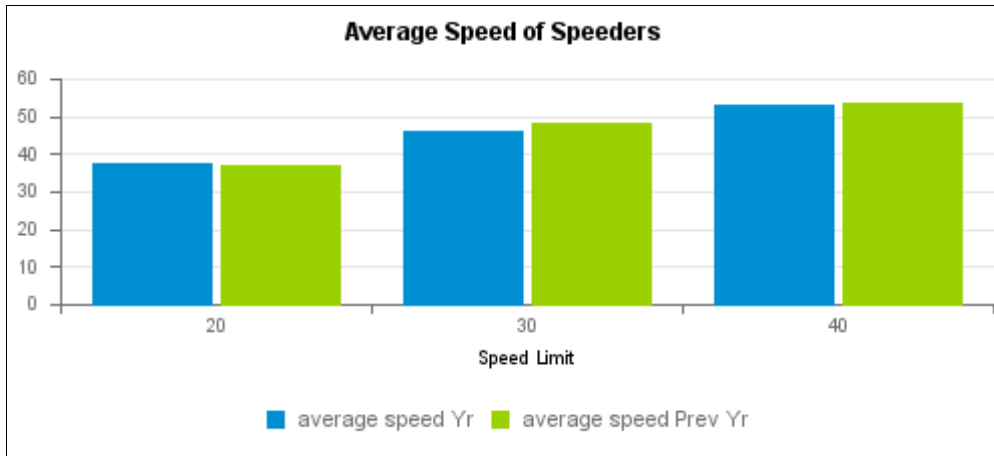


# Community SpeedWatch Monthly Report Sessions up to November 2020

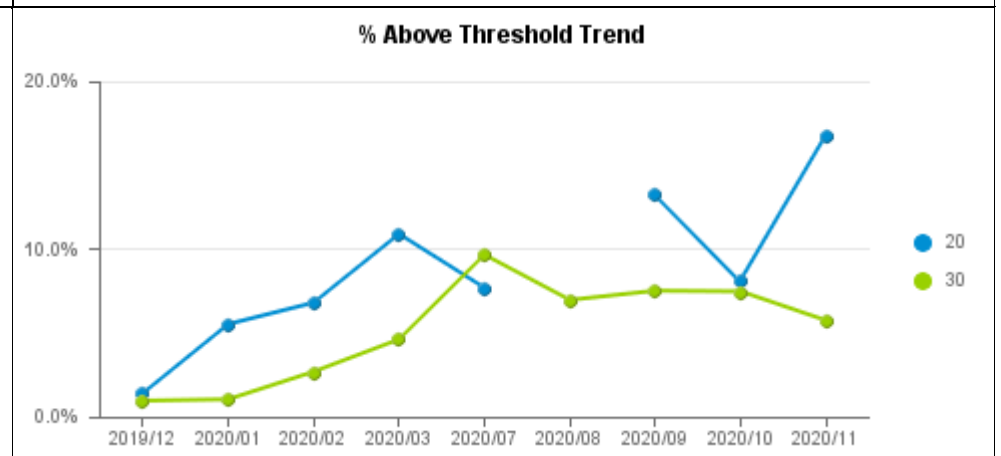
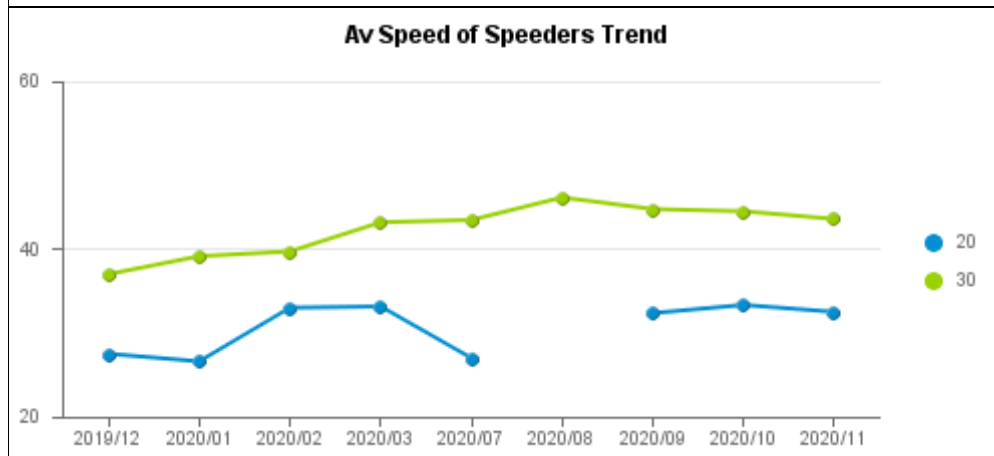
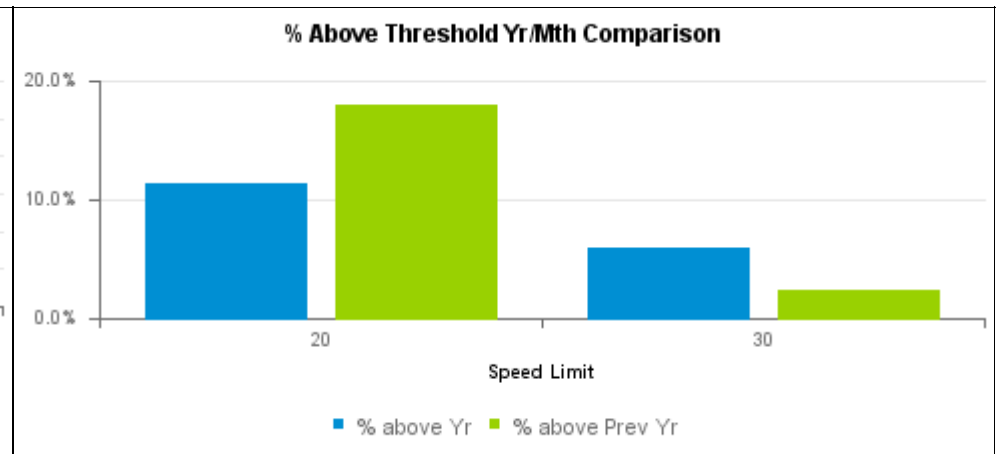
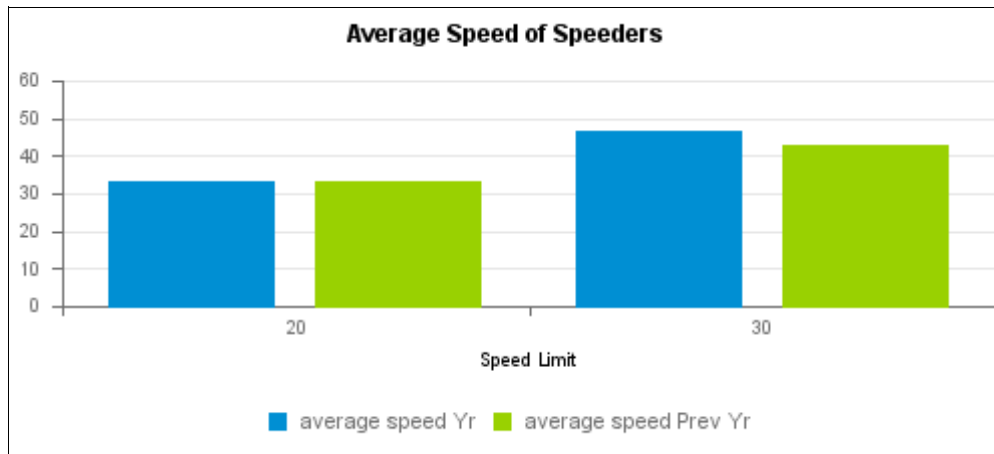
Force Level Summary															
Speed Limit	Sessions		Vehicles		Vehicles Above Threshold		% above threshold		Av Speed of speeders		Top Speed		Letters		
	Mon	Yr	Mon	Yr	Mon	Yr	Mon	Yr	Mon	Yr	Mon	Yr	Mon	NFA	In Processing
20	111	1,253	21,892	128,289	2,487	11,340	11.4%	8.8%	35.4	37.5	57	58	1,470	239	778
30	182	4,174	48,181	488,272	1,709	16,024	3.5%	3.3%	45.2	46.1	65	99	1,161	255	293
40	10	240	3,268	24,573	36	607	1.1%	2.5%	51.6	53.3	57	71	16	15	5
Total	303	5,667	73,341	641,134	4,227	27,971	5.8%	4.3%			65	99	2,647	509	1,076



## Community SpeedWatch Monthly Report Sessions up to November 2020

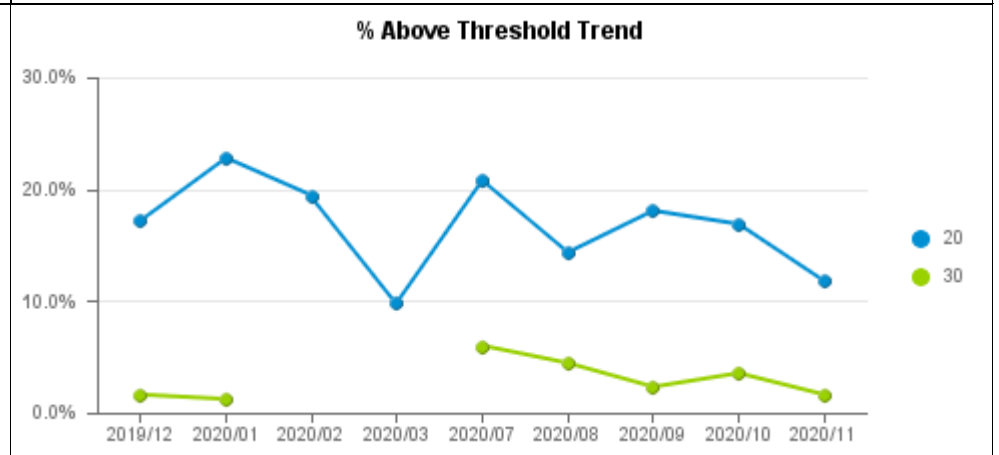
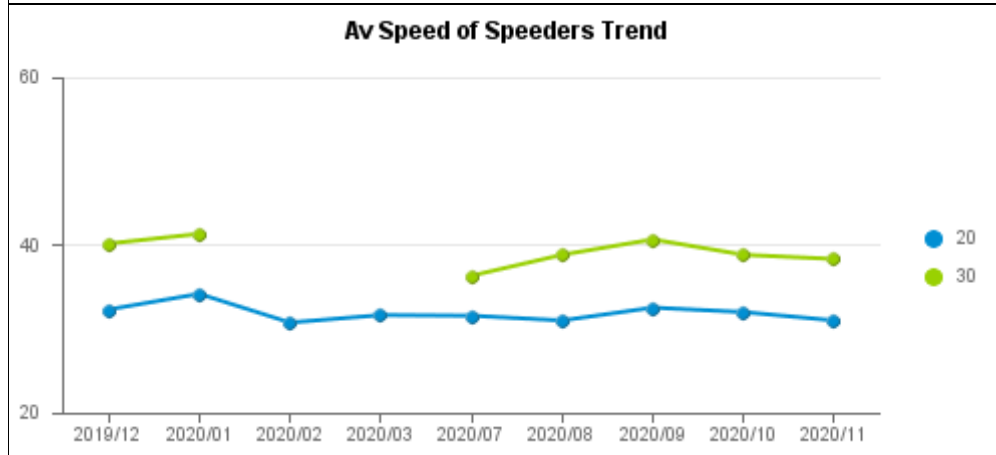
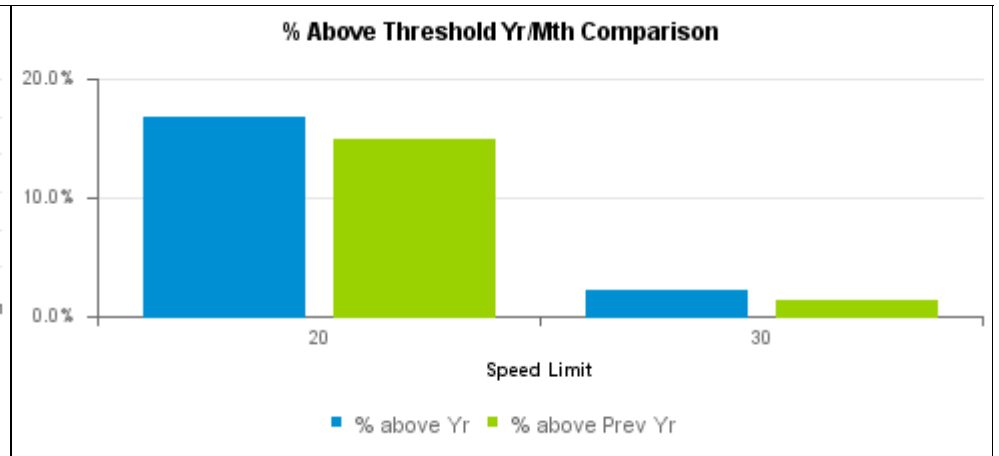
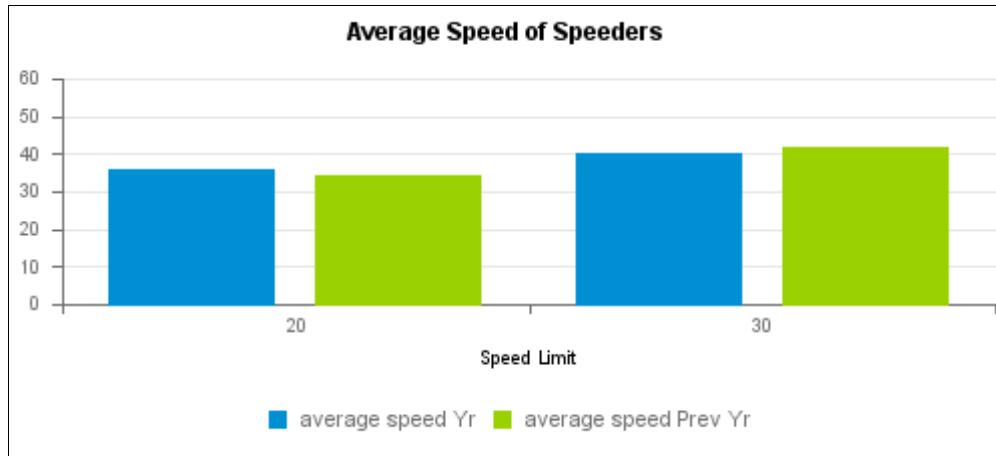
### Bath & North East Somerset Summary

Speed Limit	Sessions		Vehicles		Vehicles Above Threshold		% above threshold		Av Speed of speeders		Top Speed		Letters		
	Mon	Yr	Mon	Yr	Mon	Yr	Mon	Yr	Mon	Yr	Mon	Yr	Mon	NFA	In Processing
20	15	58	1,351	5,105	227	583	16.8%	11.4%	32.5	33.4	39	44	90	20	117
30	9	109	2,298	22,374	132	1,343	5.7%	6.0%	43.6	46.8	60	63	45	4	83
<b>Total</b>	<b>24</b>	<b>167</b>	<b>3,649</b>	<b>27,479</b>	<b>359</b>	<b>1,926</b>	<b>9.8%</b>	<b>7.0%</b>			<b>60</b>	<b>63</b>	<b>135</b>	<b>24</b>	<b>200</b>



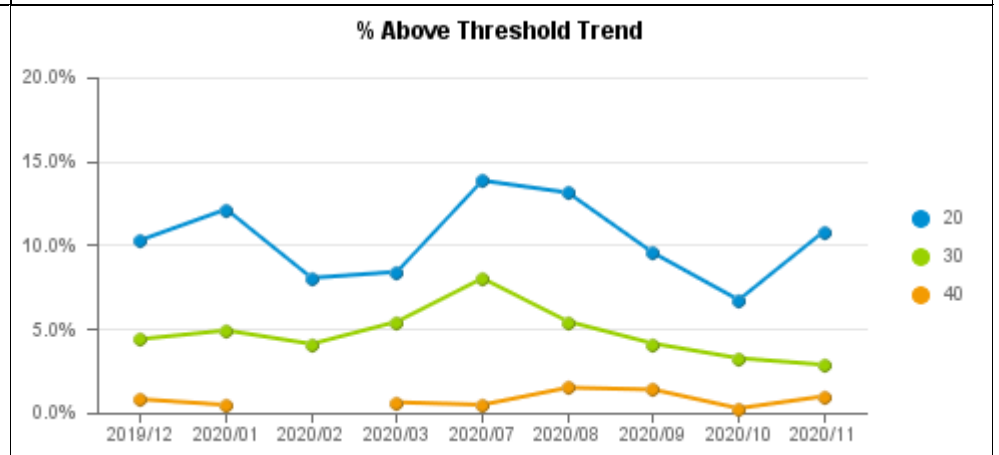
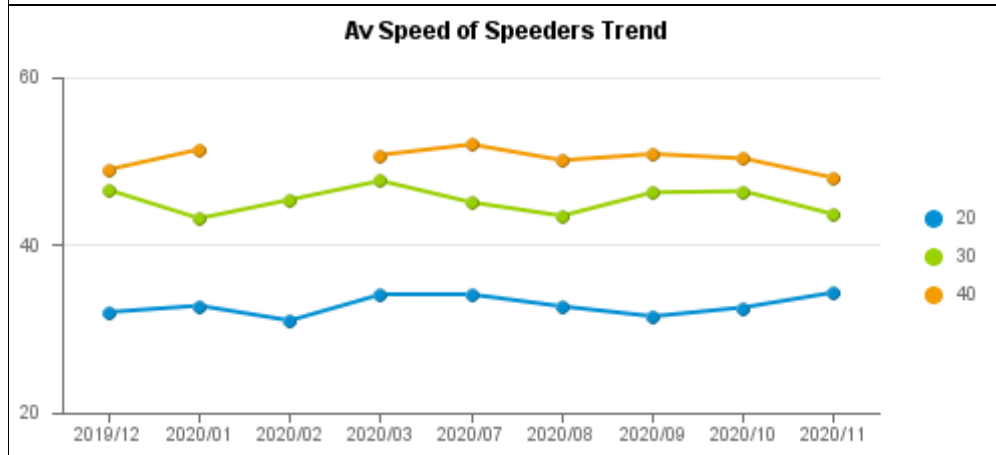
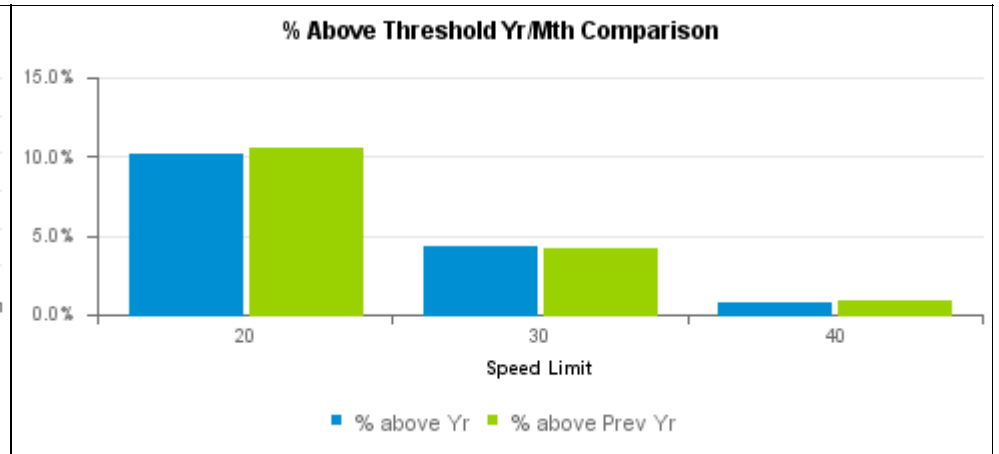
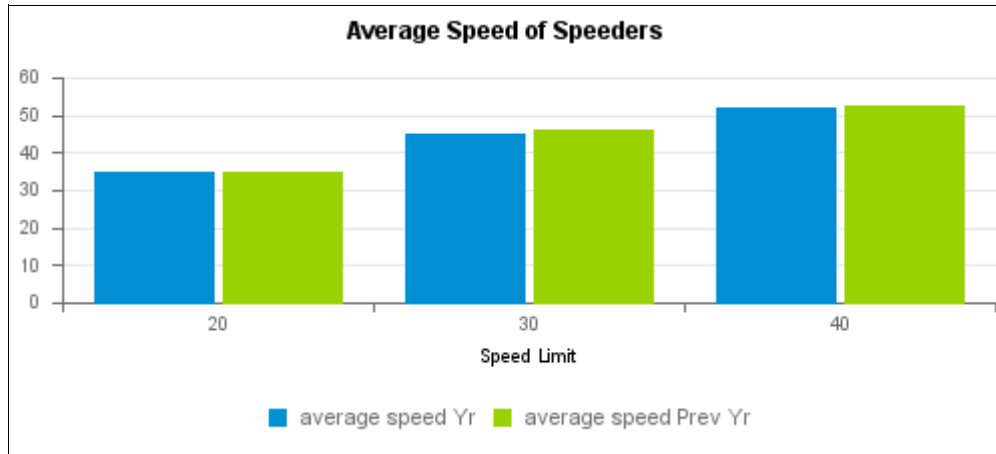
## Community SpeedWatch Monthly Report Sessions up to November 2020

Bristol Summary																
Speed Limit	Sessions		Vehicles		Vehicles Above Threshold		% above threshold		Av Speed of speeders		Top Speed		Letters			
	Mon	Yr	Mon	Yr	Mon	Yr	Mon	Yr	Mon	Yr	Mon	Yr	Mon	NFA	In Processing	
20	4	149	687	8,021	81	1,351	11.8%	16.8%	31.0	35.9	37	58	69	8	4	
30	2	46	430	3,832	7	87	1.6%	2.3%	38.3	40.3	42	50	6	1	0	
Total	6	195	1,117	11,853	88	1,438	7.9%	12.1%			42	58	75	9	4	



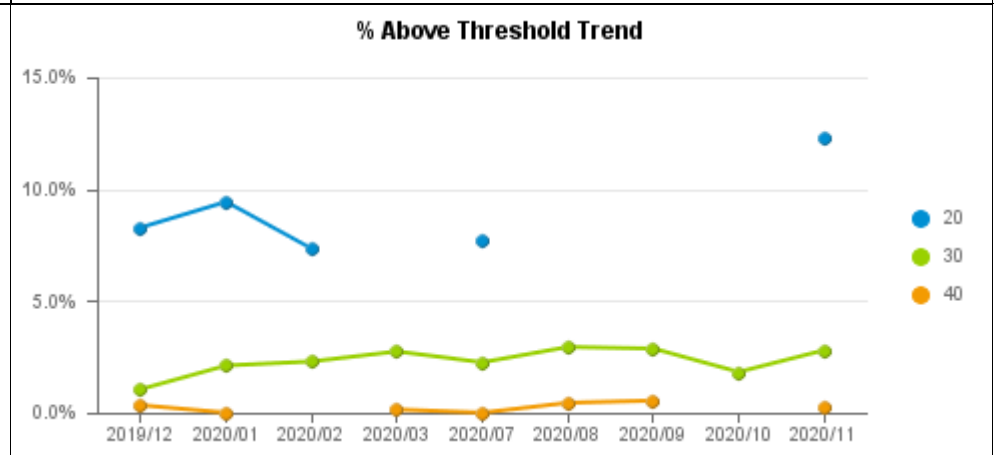
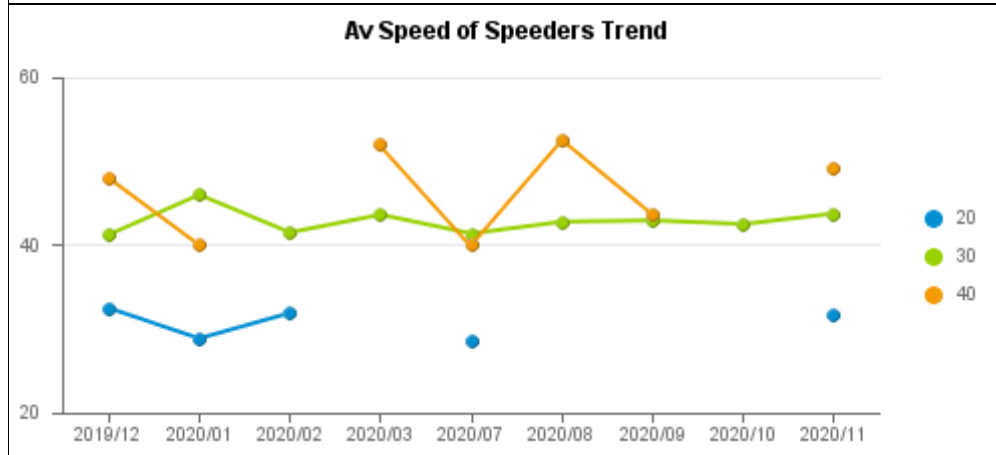
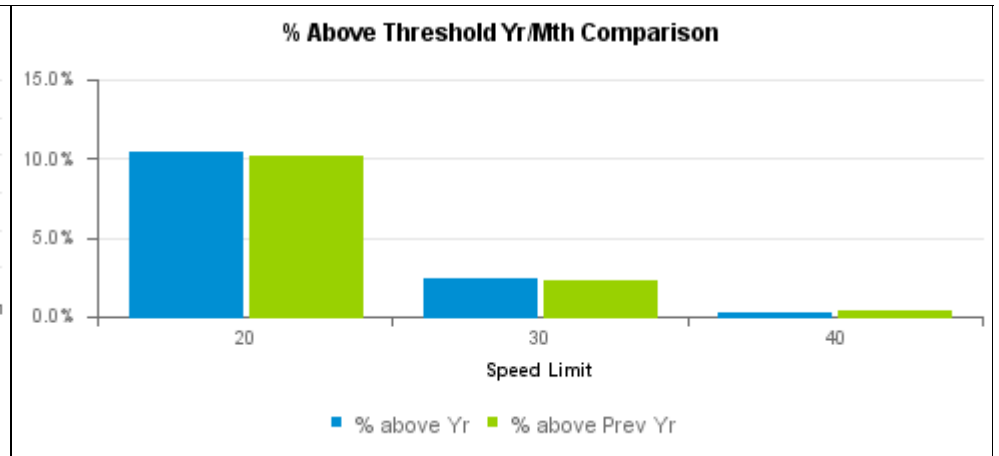
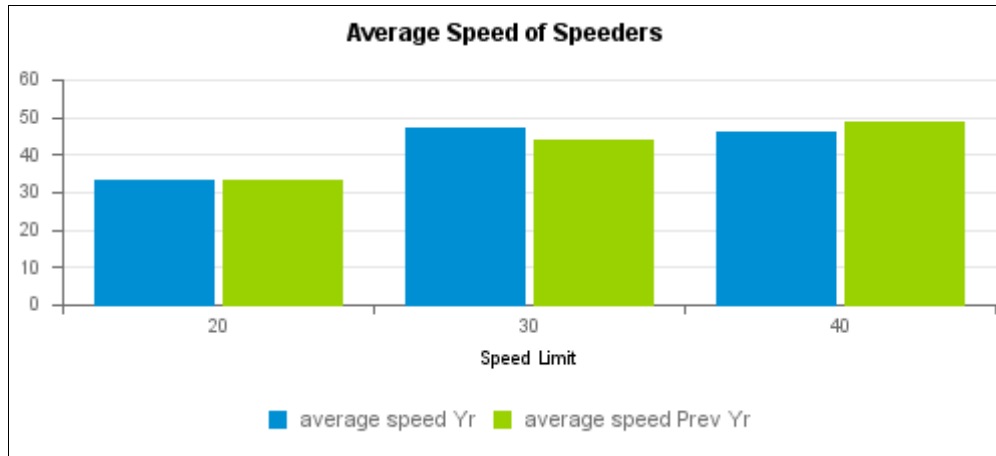
# Community SpeedWatch Monthly Report Sessions up to November 2020

Mendip Summary															
Speed Limit	Sessions		Vehicles		Vehicles Above Threshold		% above threshold		Av Speed of speeders		Top Speed		Letters		
	Mon	Yr	Mon	Yr	Mon	Yr	Mon	Yr	Mon	Yr	Mon	Yr	Mon	NFA	In Processing
20	12	130	1,986	16,721	215	1,694	10.8%	10.1%	34.4	34.6	45	47	146	9	60
30	52	1,467	11,579	133,765	331	5,745	2.9%	4.3%	43.7	45.1	57	64	187	24	120
40	1	59	407	5,963	4	47	1.0%	0.8%	48.0	51.8	49	60	2	1	1
Total	65	1,656	13,972	156,449	549	7,486	3.9%	4.7%			57	64	335	34	181



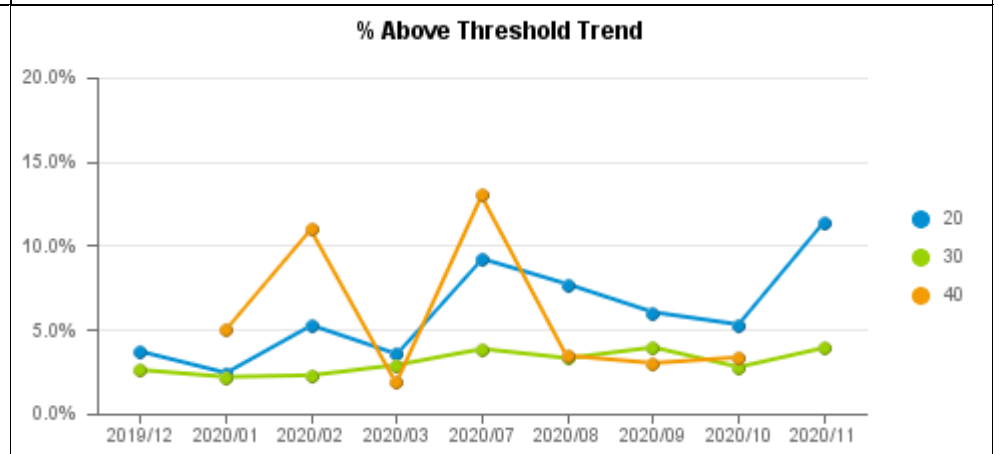
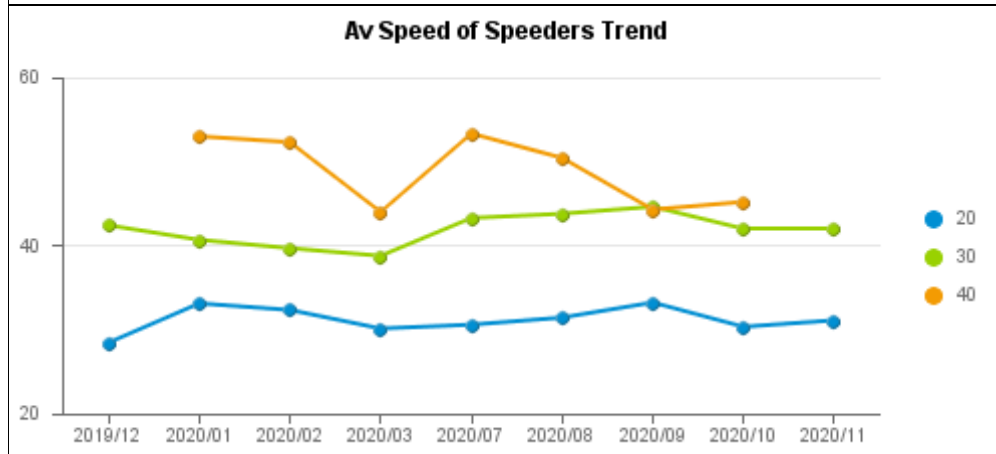
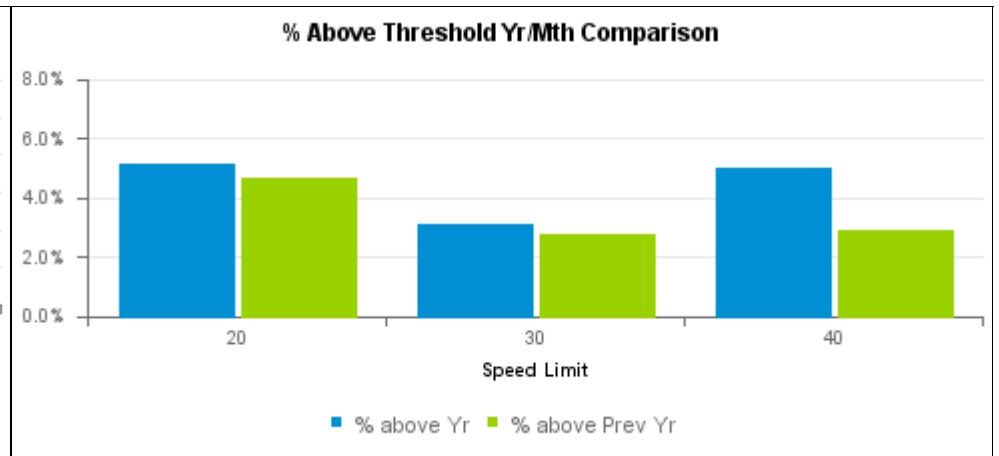
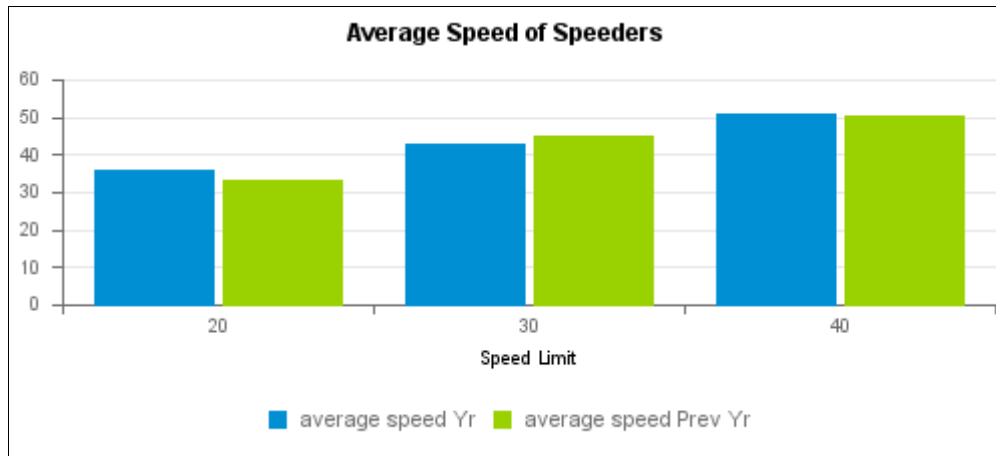
# Community SpeedWatch Monthly Report Sessions up to November 2020

North Somerset Summary															
Speed Limit	Sessions		Vehicles		Vehicles Above Threshold		% above threshold		Av Speed of speeders		Top Speed		Letters		
	Mon	Yr	Mon	Yr	Mon	Yr	Mon	Yr	Mon	Yr	Mon	Yr	Mon	NFA	In Processing
20	12	55	1,041	1,945	128	202	12.3%	10.4%	31.8	33.1	40	43	115	9	4
30	27	375	8,083	52,124	226	1,224	2.8%	2.3%	43.8	47.4	65	99	179	35	12
40	3	42	1,183	5,639	3	15	0.3%	0.3%	49.3	46.1	52	55	1	2	0
Total	42	472	10,307	59,708	355	1,441	3.4%	2.4%			65	99	295	46	16



## Community SpeedWatch Monthly Report Sessions up to November 2020

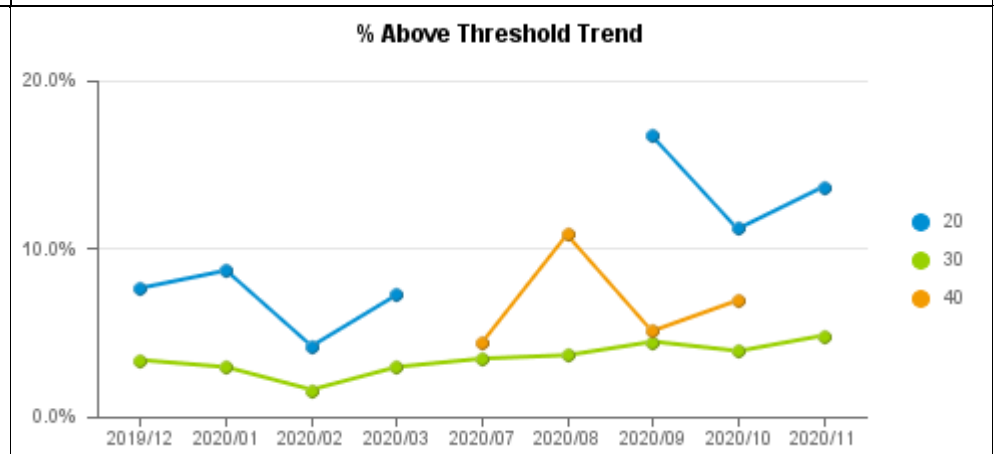
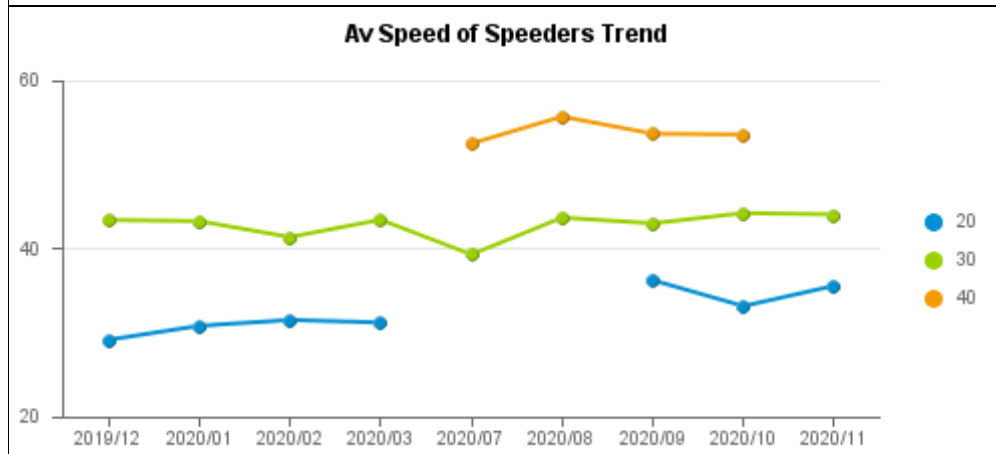
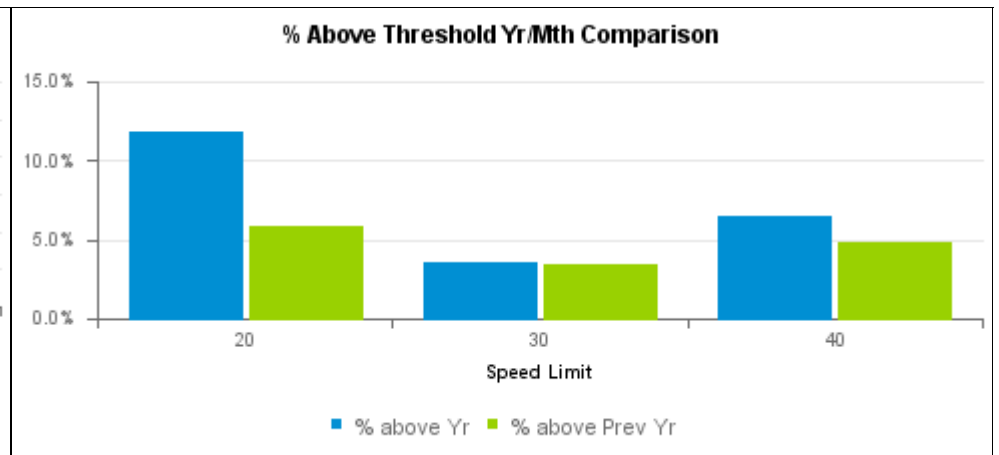
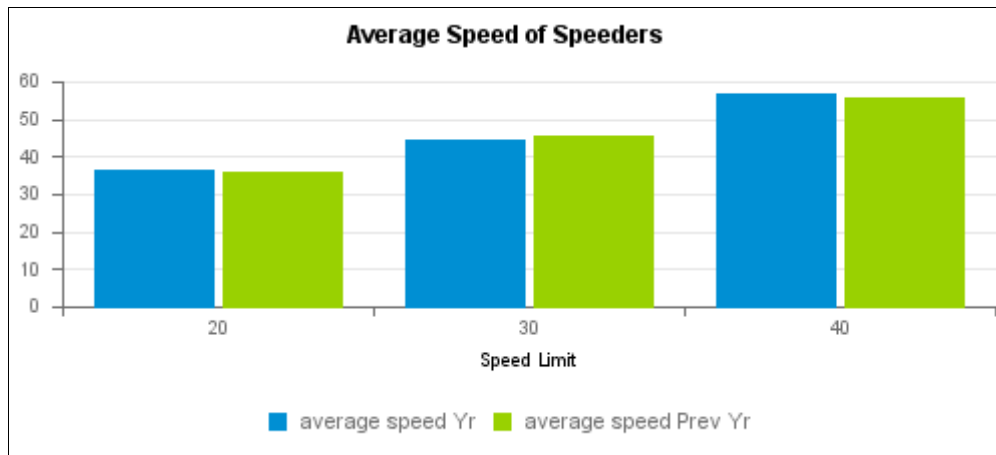
Somerset West Summary															
Speed Limit	Sessions		Vehicles		Vehicles Above Threshold		% above threshold		Av Speed of speeders		Top Speed		Letters		
	Mon	Yr	Mon	Yr	Mon	Yr	Mon	Yr	Mon	Yr	Mon	Yr	Mon	NFA	In Processing
20	3	219	307	10,978	35	566	11.4%	5.2%	31.1	35.8	39	54	25	4	6
30	65	970	19,258	155,145	754	4,818	3.9%	3.1%	42.0	42.9	54	62	553	151	50
40	0	17	0	1,503	0	75	-	5.0%	-	50.8	-	63	-	-	0
Total	68	1,206	19,565	167,626	789	5,459	4.0%	3.2%			54	63	578	155	56



## Community SpeedWatch Monthly Report Sessions up to November 2020

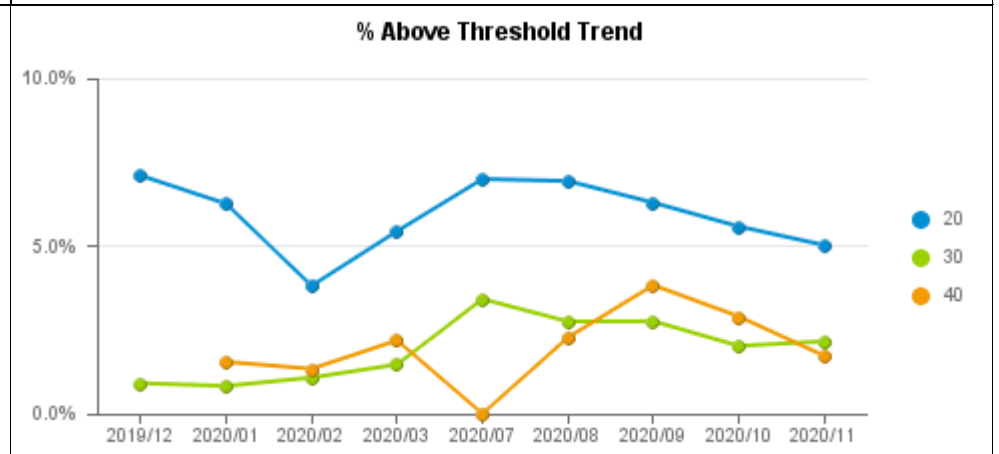
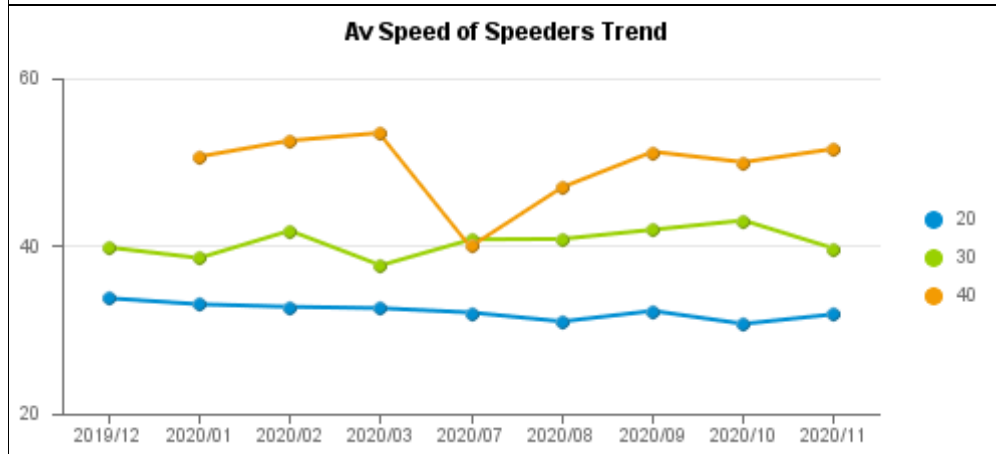
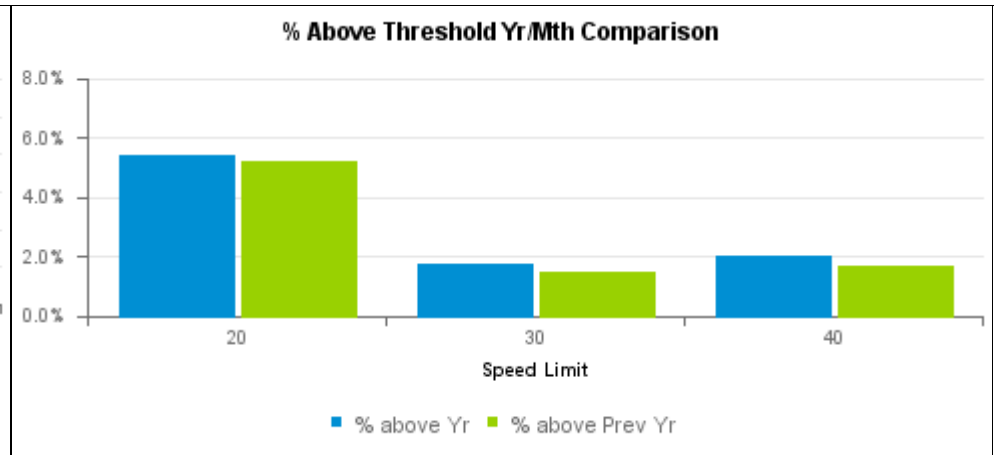
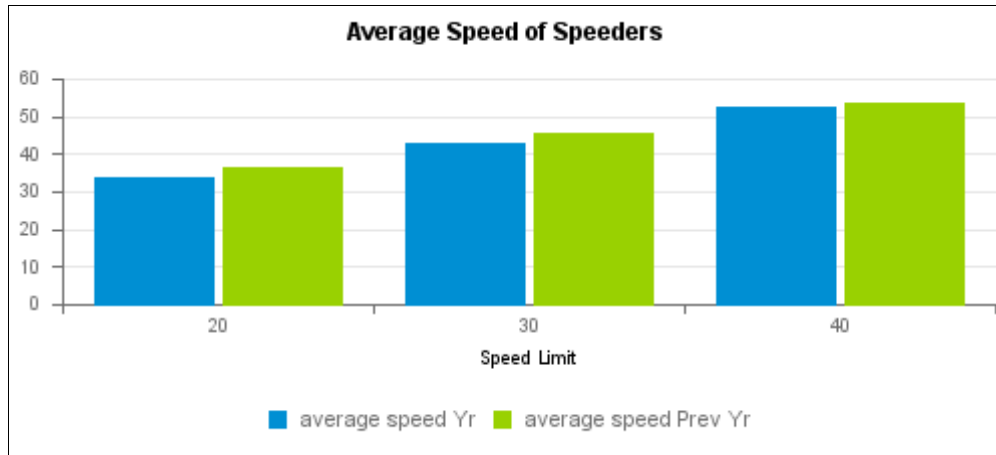
### South Gloucestershire Summary

Speed Limit	Sessions		Vehicles		Vehicles Above Threshold		% above threshold		Av Speed of speeders		Top Speed		Letters		
	Mon	Yr	Mon	Yr	Mon	Yr	Mon	Yr	Mon	Yr	Mon	Yr	Mon	NFA	In Processing
20	38	136	11,190	36,111	1,533	4,267	13.7%	11.8%	35.6	36.2	57	57	885	174	474
30	17	411	4,447	40,867	215	1,437	4.8%	3.5%	44.1	44.7	57	65	155	35	25
40	0	44	0	5,327	0	344	-	6.5%	-	57.0	-	71	-	-	0
<b>Total</b>	<b>55</b>	<b>591</b>	<b>15,637</b>	<b>82,305</b>	<b>1,747</b>	<b>6,048</b>	<b>11.2%</b>	<b>7.3%</b>			<b>57</b>	<b>71</b>	<b>1,040</b>	<b>209</b>	<b>499</b>



# Community SpeedWatch Monthly Report Sessions up to November 2020

South Somerset Summary																
Speed Limit	Sessions		Vehicles		Vehicles Above Threshold		% above threshold		Av Speed of speeders		Top Speed		Letters			
	Mon	Yr	Mon	Yr	Mon	Yr	Mon	Yr	Mon	Yr	Mon	Yr	Mon	NFA	In Processing	
20	27	509	5,330	49,651	268	2,688	5.0%	5.4%	31.9	33.6	44	48	140	15	113	
30	10	816	2,086	81,615	45	1,418	2.2%	1.7%	39.7	42.9	49	64	36	5	4	
40	6	78	1,678	6,141	29	126	1.7%	2.1%	51.6	52.5	57	61	13	12	4	
Total	43	1,403	9,094	137,407	342	4,232	3.8%	3.0%			57	64	189	32	121	





## Community SpeedWatch Monthly Report Sessions up to November 2020

---

## Community SpeedWatch Monthly Report Sessions up to November 2020

### Bath & North East Somerset

*Sessions Between 02/12/2019 to 30/11/2020*

#### Bath Central

Site Code	Site Location	Speed Limit	Sessions		Vehicles		Vehicles Above Threshold		% Above Threshold		Av Speed of speeders		Top Speed		Letters		
			Mon	Yr	Mon	Yr	Mon	Yr	Mon	Yr	Mon	Yr	Mon	Yr	Mon	NFA	In Processing
BA1301	Great Pulteney Street (William Street)	20	1	3	55	447	15	35	27.3%	7.8%	29.2	30.6	32	37	1	1	13
	<b>Total</b>		<b>1</b>	<b>3</b>	<b>55</b>	<b>447</b>	<b>15</b>	<b>35</b>	<b>27.3%</b>	<b>7.8%</b>			<b>32</b>	<b>37</b>	<b>1</b>	<b>1</b>	<b>13</b>

#### Box Road

Site Code	Site Location	Speed Limit	Sessions		Vehicles		Vehicles Above Threshold		% Above Threshold		Av Speed of speeders		Top Speed		Letters		
			Mon	Yr	Mon	Yr	Mon	Yr	Mon	Yr	Mon	Yr	Mon	Yr	Mon	NFA	In Processing
BA2001	A4 (Box Road)	30	4	40	1,141	13,747	84	1,025	7.4%	7.5%	42.8	46.5	53	63	44	3	37
	<b>Total</b>		<b>4</b>	<b>40</b>	<b>1,141</b>	<b>13,747</b>	<b>84</b>	<b>1,025</b>	<b>7.4%</b>	<b>7.5%</b>			<b>53</b>	<b>63</b>	<b>44</b>	<b>3</b>	<b>37</b>

#### Camerton

Site Code	Site Location	Speed Limit	Sessions		Vehicles		Vehicles Above Threshold		% Above Threshold		Av Speed of speeders		Top Speed		Letters		
			Mon	Yr	Mon	Yr	Mon	Yr	Mon	Yr	Mon	Yr	Mon	Yr	Mon	NFA	In Processing
BA1701	B3115 (Tunley Hill)	30	1	7	135	818	22	114	16.3%	13.9%	43.3	43.9	60	60	-	0	22
BA1702	Camerton Road (Red Hill)	30	2	6	314	865	2	19	0.6%	2.2%	35.7	39.6	41	50	1	1	0
	<b>Total</b>		<b>3</b>	<b>13</b>	<b>449</b>	<b>1,683</b>	<b>24</b>	<b>133</b>	<b>5.3%</b>	<b>7.8%</b>			<b>60</b>	<b>60</b>	<b>1</b>	<b>1</b>	<b>22</b>

## Community SpeedWatch Monthly Report Sessions up to November 2020

Sessions Between 02/12/2019 to 30/11/2020

### Chew Valley

Site Code	Site Location	Speed Limit	Sessions		Vehicles		Vehicles Above Threshold		% Above Threshold		Av Speed of speeders		Top Speed		Letters		
			Mon	Yr	Mon	Yr	Mon	Yr	Mon	Yr	Mon	Yr	Mon	Yr	Mon	NFA	In Processing
BA0101	Tunbridge Road	20	2	9	118	423	13	61	11.0%	14.4%	29.9	32.8	37	43	1	3	9
BA0103	Winford Road	20	1	9	36	561	11	81	30.6%	14.4%	30.9	33.2	37	43	6	4	1
<b>Total</b>			<b>3</b>	<b>18</b>	<b>154</b>	<b>984</b>	<b>24</b>	<b>142</b>	<b>15.6%</b>	<b>14.4%</b>			<b>37</b>	<b>43</b>	<b>7</b>	<b>7</b>	<b>10</b>

### Ensleigh

Site Code	Site Location	Speed Limit	Sessions		Vehicles		Vehicles Above Threshold		% Above Threshold		Av Speed of speeders		Top Speed		Letters		
			Mon	Yr	Mon	Yr	Mon	Yr	Mon	Yr	Mon	Yr	Mon	Yr	Mon	NFA	In Processing
BA1801	Lansdown ROad	30	0	2	0	702	0	47	-	6.7%	-	43.2	-	56	-		0
<b>Total</b>			<b>0</b>	<b>2</b>		<b>702</b>	<b>0</b>	<b>47</b>	<b>-</b>	<b>6.7%</b>			<b>-</b>	<b>56</b>	<b>-</b>		<b>0</b>

### Freshford

Site Code	Site Location	Speed Limit	Sessions		Vehicles		Vehicles Above Threshold		% Above Threshold		Av Speed of speeders		Top Speed		Letters		
			Mon	Yr	Mon	Yr	Mon	Yr	Mon	Yr	Mon	Yr	Mon	Yr	Mon	NFA	In Processing
BA1201	Freshford Lane	20	0	7	0	185	0	42	-	22.7%	-	31.9	-	44	-		0
BA1202	High Street (Woodlands)	20	0	3	0	42	0	0	-	0.0%	-	20.0	-	20	-		0
BA1203	High Street (Freshford House)	20	0	3	0	185	0	0	-	0.0%	-	20.0	-	20	-		0
BA1204	Church Road	20	0	2	0	214	0	3	-	1.4%	-	27.5	-	28	-		0
<b>Total</b>			<b>0</b>	<b>15</b>		<b>626</b>	<b>0</b>	<b>45</b>	<b>-</b>	<b>7.2%</b>			<b>-</b>	<b>44</b>	<b>-</b>		<b>0</b>

## Community SpeedWatch Monthly Report Sessions up to November 2020

*Sessions Between 02/12/2019 to 30/11/2020*

### Midsomer Norton

Site Code	Site Location	Speed Limit	Sessions		Vehicles		Vehicles Above Threshold		% Above Threshold		Av Speed of speeders		Top Speed		Letters		
			Mon	Yr	Mon	Yr	Mon	Yr	Mon	Yr	Mon	Yr	Mon	Yr	Mon	NFA	In Processing
BA0303	North Road	30	0	13	0	926	0	26	-	2.8%	-	38.2	-	41	-		0
BA0306	Northmead Road	30	1	2	298	677	2	20	0.7%	3.0%	37.5	39.8	38	44	-	0	2
BA0312	West Road - Welton Grove	30	0	18	0	2,486	0	51	-	2.1%	-	39.9	-	45	-		0
BA0313	Radstock Road	30	1	13	410	1,818	22	38	5.4%	2.1%	40.6	40.6	48	48	-	0	22
BA0318	o/s Westwood	30	0	2	0	335	0	7	-	2.1%	-	38.7	-	43	-		0
<b>Total</b>			<b>2</b>	<b>48</b>	<b>708</b>	<b>6,242</b>	<b>24</b>	<b>142</b>	<b>3.4%</b>	<b>2.3%</b>			<b>48</b>	<b>48</b>	<b>-</b>	<b>0</b>	<b>24</b>

### Timsbury

Site Code	Site Location	Speed Limit	Sessions		Vehicles		Vehicles Above Threshold		% Above Threshold		Av Speed of speeders		Top Speed		Letters		
			Mon	Yr	Mon	Yr	Mon	Yr	Mon	Yr	Mon	Yr	Mon	Yr	Mon	NFA	In Processing
BA1401	North Road	20	9	14	1,039	2,551	171	318	16.5%	12.5%	32.2	33.7	39	44	76	10	85
BA1402	South Road	20	2	6	103	497	17	45	16.5%	9.1%	29.6	30.8	34	36	6	2	9
<b>Total</b>			<b>11</b>	<b>20</b>	<b>1,142</b>	<b>3,048</b>	<b>188</b>	<b>363</b>	<b>16.5%</b>	<b>11.8%</b>			<b>39</b>	<b>44</b>	<b>82</b>	<b>12</b>	<b>94</b>

### Bristol

*Sessions Between 01/12/2019 to 27/11/2020*

## Community SpeedWatch Monthly Report Sessions up to November 2020

Sessions Between 01/12/2019 to 27/11/2020

### Bedminster

Site Code	Site Location	Speed Limit	Sessions		Vehicles		Vehicles Above Threshold		% Above Threshold		Av Speed of speeders		Top Speed		Letters		
			Mon	Yr	Mon	Yr	Mon	Yr	Mon	Yr	Mon	Yr	Mon	Yr	Mon	NFA	In Processing
BR0901	St Johns Road	20	3	14	515	1,627	51	211	9.9%	13.0%	31.2	31.0	37	37	42	7	2
	<b>Total</b>		<b>3</b>	<b>14</b>	<b>515</b>	<b>1,627</b>	<b>51</b>	<b>211</b>	<b>9.9%</b>	<b>13.0%</b>			<b>37</b>	<b>37</b>	<b>42</b>	<b>7</b>	<b>2</b>

### Clanage Road

Site Code	Site Location	Speed Limit	Sessions		Vehicles		Vehicles Above Threshold		% Above Threshold		Av Speed of speeders		Top Speed		Letters		
			Mon	Yr	Mon	Yr	Mon	Yr	Mon	Yr	Mon	Yr	Mon	Yr	Mon	NFA	In Processing
BR0501	Clanage Road	30	0	1	0	98	0	1	-	1.0%	-	31.0	-	31	-		0
	<b>Total</b>		<b>0</b>	<b>1</b>		<b>98</b>	<b>0</b>	<b>1</b>	<b>-</b>	<b>1.0%</b>			<b>-</b>	<b>31</b>	<b>-</b>		<b>0</b>

### Conham Road

Site Code	Site Location	Speed Limit	Sessions		Vehicles		Vehicles Above Threshold		% Above Threshold		Av Speed of speeders		Top Speed		Letters		
			Mon	Yr	Mon	Yr	Mon	Yr	Mon	Yr	Mon	Yr	Mon	Yr	Mon	NFA	In Processing
BR0201	Conham Road	20	0	17	0	311	0	59	-	19.0%	-	29.9	-	37	-		0
	<b>Total</b>		<b>0</b>	<b>17</b>		<b>311</b>	<b>0</b>	<b>59</b>	<b>-</b>	<b>19.0%</b>			<b>-</b>	<b>37</b>	<b>-</b>		<b>0</b>

## Community SpeedWatch Monthly Report Sessions up to November 2020

Sessions Between 01/12/2019 to 27/11/2020

### Cumberland Road

Site Code	Site Location	Speed Limit	Sessions		Vehicles		Vehicles Above Threshold		% Above Threshold		Av Speed of speeders		Top Speed		Letters		
			Mon	Yr	Mon	Yr	Mon	Yr	Mon	Yr	Mon	Yr	Mon	Yr	Mon	NFA	In Processing
BR0401	Cumberland Road	30	2	34	430	2,663	7	75	1.6%	2.8%	38.3	41.1	42	50	6	1	0
	<b>Total</b>		<b>2</b>	<b>34</b>	<b>430</b>	<b>2,663</b>	<b>7</b>	<b>75</b>	<b>1.6%</b>	<b>2.8%</b>			<b>42</b>	<b>50</b>	<b>6</b>	<b>1</b>	<b>0</b>

### Sion Hill (Clifton)

Site Code	Site Location	Speed Limit	Sessions		Vehicles		Vehicles Above Threshold		% Above Threshold		Av Speed of speeders		Top Speed		Letters		
			Mon	Yr	Mon	Yr	Mon	Yr	Mon	Yr	Mon	Yr	Mon	Yr	Mon	NFA	In Processing
BR1501	Sion Hill	20	0	15	0	901	0	143	-	15.9%	-	29.0	-	33	-		0
	<b>Total</b>		<b>0</b>	<b>15</b>		<b>901</b>	<b>0</b>	<b>143</b>	<b>-</b>	<b>15.9%</b>			<b>-</b>	<b>33</b>	<b>-</b>		<b>0</b>

## Community SpeedWatch Monthly Report Sessions up to November 2020

Sessions Between 01/12/2019 to 27/11/2020

### Stoke Bishop and Westbury

Site Code	Site Location	Speed Limit	Sessions		Vehicles		Vehicles Above Threshold		% Above Threshold		Av Speed of speeders		Top Speed		Letters		
			Mon	Yr	Mon	Yr	Mon	Yr	Mon	Yr	Mon	Yr	Mon	Yr	Mon	NFA	In Processing
BR1101	Bell Barn Rd/Coombe Bridge Ave	20	0	5	0	71	0	30	-	42.3%	-	29.0	-	33	-		0
BR1104	Stoke Hill	30	0	2	0	263	0	5	-	1.9%	-	40.0	-	45	-		0
BR1105	Coombe Lane	20	1	7	172	488	30	100	17.4%	20.5%	28.3	30.5	33	36	27	1	2
BR1106	Canford Lane (Junction with Churchill Dri	30	0	4	0	408	0	2	-	0.5%	-	37.5	-	39	-		0
BR1107	Old Sneed Avenue	20	0	8	0	180	0	58	-	32.2%	-	29.2	-	34	-		0
BR1108	Eastfield Road	20	0	7	0	885	0	65	-	7.3%	-	28.0	-	31	-		0
BR1109	Parrys Lane (Opposite No 38)	30	0	2	0	400	0	4	-	1.0%	-	38.0	-	40	-		0
BR1110	Reedley Road	20	0	8	0	333	0	65	-	19.5%	-	32.0	-	52	-		0
BR1111	Stoke Lane (Outside no. 174)	20	0	8	0	511	0	93	-	18.2%	-	32.8	-	58	-		0
BR1112	Stoke Lane (Outside no. 171)	20	0	1	0	108	0	32	-	29.6%	-	31.5	-	39	-		0
BR1114	South Croft (Henleaze)	20	0	3	0	55	0	5	-	9.1%	-	29.8	-	38	-		0
BR1115	Stoke Hill (Church Avenue)	20	0	2	0	423	0	10	-	2.4%	-	37.5	-	39	-		0
BR1116	Passage Road (Channels Hill)	20	0	1	0	500	0	28	-	5.6%	-	28.9	-	33	-		0
	<b>Total</b>		<b>1</b>	<b>58</b>	<b>172</b>	<b>4,625</b>	<b>30</b>	<b>497</b>	<b>17.4%</b>	<b>10.6%</b>			<b>33</b>	<b>58</b>	<b>27</b>	<b>1</b>	<b>2</b>

## Community SpeedWatch Monthly Report Sessions up to November 2020

*Sessions Between 01/12/2019 to 27/11/2020*

### Troopers Hill Road

Site Code	Site Location	Speed Limit	Sessions		Vehicles		Vehicles Above Threshold		% Above Threshold		Av Speed of speeders		Top Speed		Letters		
			Mon	Yr	Mon	Yr	Mon	Yr	Mon	Yr	Mon	Yr	Mon	Yr	Mon	NFA	In Processing
BR0101	Troopers Hill Road - 87a	20	0	13	0	138	0	38	-	27.5%	-	30.2	-	38	-		0
BR0102	Troopers Hill Road - 109	20	0	11	0	228	0	33	-	14.5%	-	29.0	-	36	-		0
	<b>Total</b>		<b>0</b>	<b>24</b>		<b>366</b>	<b>0</b>	<b>71</b>	<b>-</b>	<b>19.4%</b>			<b>-</b>	<b>38</b>	<b>-</b>		<b>0</b>

### Wick Road

Site Code	Site Location	Speed Limit	Sessions		Vehicles		Vehicles Above Threshold		% Above Threshold		Av Speed of speeders		Top Speed		Letters		
			Mon	Yr	Mon	Yr	Mon	Yr	Mon	Yr	Mon	Yr	Mon	Yr	Mon	NFA	In Processing
BR1001	Newbridge Road - St Annes Wood	20	0	21	0	1,149	0	354	-	30.8%	-	33.8	-	44	-		0
BR1004	Newbridge Rd (Nightingale Close)	20	0	4	0	113	0	38	-	33.6%	-	29.4	-	37	-		0
	<b>Total</b>		<b>0</b>	<b>25</b>		<b>1,262</b>	<b>0</b>	<b>392</b>	<b>-</b>	<b>31.0%</b>			<b>-</b>	<b>44</b>	<b>-</b>		<b>0</b>

### Mendip

*Sessions Between 01/12/2019 to 30/11/2020*



## Community SpeedWatch Monthly Report Sessions up to November 2020

Sessions Between 01/12/2019 to 30/11/2020

### Baltonsborough

Site Code	Site Location	Speed Limit	Sessions		Vehicles		Vehicles Above Threshold		% Above Threshold		Av Speed of speeders		Top Speed		Letters		
			Mon	Yr	Mon	Yr	Mon	Yr	Mon	Yr	Mon	Yr	Mon	Yr	Mon	NFA	In Processing
ME0201	Ham Street South	30	0	1	0	66	0	3	-	4.5%	-	36.5	-	37	-		0
ME0202	Ham Street North	30	0	2	0	110	0	7	-	6.4%	-	34.7	-	38	-		0
ME0203	Church Lane	30	0	1	0	92	0	9	-	9.8%	-	38.4	-	41	-		0
ME0204	Martin Street	30	0	1	0	53	0	10	-	18.9%	-	38.3	-	42	-		0
ME0205	Church Lane (Apple Meadow)	30	1	6	52	404	3	18	5.8%	4.5%	39.7	40.3	42	47	1	0	2
ME0206	Ham Street (Village Hall)	20	0	2	0	104	0	24	-	23.1%	-	28.7	-	32	-		0
ME0207	Ham Street (Applefields)	30	1	11	41	649	9	85	22.0%	13.1%	38.6	40.3	42	47	7	1	1
	<b>Total</b>		<b>2</b>	<b>24</b>	<b>93</b>	<b>1,478</b>	<b>12</b>	<b>156</b>	<b>12.9%</b>	<b>9.8%</b>			<b>42</b>	<b>47</b>	<b>8</b>	<b>1</b>	<b>3</b>

### Beckington

Site Code	Site Location	Speed Limit	Sessions		Vehicles		Vehicles Above Threshold		% Above Threshold		Av Speed of speeders		Top Speed		Letters		
			Mon	Yr	Mon	Yr	Mon	Yr	Mon	Yr	Mon	Yr	Mon	Yr	Mon	NFA	In Processing
ME2603	Castle Corner	30	0	11	0	334	0	26	-	7.8%	-	43.2	-	56	-		0
ME2604	Castle Corner	20	0	11	0	334	0	83	-	24.9%	-	34.9	-	45	-		0
	<b>Total</b>		<b>0</b>	<b>22</b>		<b>668</b>	<b>0</b>	<b>109</b>	<b>-</b>	<b>14.7%</b>			<b>-</b>	<b>56</b>	<b>-</b>		<b>0</b>

## Community SpeedWatch Monthly Report Sessions up to November 2020

Sessions Between 01/12/2019 to 30/11/2020

### Chilcompton

Site Code	Site Location	Speed Limit	Sessions		Vehicles		Vehicles Above Threshold		% Above Threshold		Av Speed of speeders		Top Speed		Letters		
			Mon	Yr	Mon	Yr	Mon	Yr	Mon	Yr	Mon	Yr	Mon	Yr	Mon	NFA	In Processing
ME0401	Co-Op - Footpath/grassed area outside H	30	1	12	309	1,873	6	39	1.9%	2.1%	38.0	39.5	40	43	5	0	1
ME0402	Greenditch Close	30	1	13	339	2,072	6	33	1.8%	1.6%	40.8	40.2	46	46	6	0	0
ME0403	Village Hall	30	1	9	254	1,780	5	18	2.0%	1.0%	36.5	39.6	37	48	-	0	5
ME0404	Stockhill Road	30	0	2	0	8	0	1	-	12.5%	-	30.0	-	30	-	-	0
ME0405	Parsonage Lane	30	0	5	0	90	0	3	-	3.3%	-	37.7	-	39	-	-	0
ME0406	Naishes Cross - Hoecroft Gardens	30	1	3	16	31	0	1	0.0%	3.2%	30.0	30.0	30	30	-	1	-1
ME0407	B3139	30	2	8	294	294	6	6	2.0%	2.0%	38.8	38.8	41	41	3	1	2
ME0408	Bakers Lane	30	0	7	0	174	0	2	-	1.1%	-	33.5	-	37	-	-	0
ME0409	Bath/Wells Road Layby	40	1	15	407	1,217	4	19	1.0%	1.6%	48.0	50.1	49	55	2	1	1
ME0410	The Street (Somerway)	30	0	3	0	205	0	4	-	2.0%	-	36.5	-	37	-	-	0
ME0411	The Street - Woodview Bus Stop	30	1	12	203	956	0	1	0.0%	0.1%	30.0	33.0	30	36	-	0	0
	<b>Total</b>		<b>8</b>	<b>89</b>	<b>1,822</b>	<b>8,700</b>	<b>27</b>	<b>127</b>	<b>1.5%</b>	<b>1.4%</b>			<b>49</b>	<b>55</b>	<b>16</b>	<b>3</b>	<b>8</b>

### Cranmore

Site Code	Site Location	Speed Limit	Sessions		Vehicles		Vehicles Above Threshold		% Above Threshold		Av Speed of speeders		Top Speed		Letters		
			Mon	Yr	Mon	Yr	Mon	Yr	Mon	Yr	Mon	Yr	Mon	Yr	Mon	NFA	In Processing
ME3303	A361 (Dean)	40	0	1	0	329	0	6	-	1.8%	-	49.4	-	53	-	-	0
ME3304	Tansey Road (Royal Navy Test Site)	30	0	7	0	626	0	59	-	9.4%	-	42.7	-	51	-	-	0
ME3305	Tansey Road (by White House)	30	0	5	0	531	0	97	-	18.3%	-	44.9	-	56	-	-	0
	<b>Total</b>		<b>0</b>	<b>13</b>		<b>1,486</b>	<b>0</b>	<b>162</b>	<b>-</b>	<b>10.8%</b>			<b>-</b>	<b>56</b>	<b>-</b>	<b>-</b>	<b>0</b>

## Community SpeedWatch Monthly Report Sessions up to November 2020

Sessions Between 01/12/2019 to 30/11/2020

### Croscombe

Site Code	Site Location	Speed Limit	Sessions		Vehicles		Vehicles Above Threshold		% Above Threshold		Av Speed of speeders		Top Speed		Letters		
			Mon	Yr	Mon	Yr	Mon	Yr	Mon	Yr	Mon	Yr	Mon	Yr	Mon	NFA	In Processing
ME3201	Long Street (George Inn)	30	0	3	0	165	0	7	-	4.2%	-	27.0	-	28	-		0
ME3202	Long Street (Coombe Cottages)	20	7	52	1,508	10,802	116	960	7.7%	8.9%	34.3	33.2	45	45	98	5	13
	<b>Total</b>		<b>7</b>	<b>55</b>	<b>1,508</b>	<b>10,967</b>	<b>116</b>	<b>967</b>	<b>7.7%</b>	<b>8.8%</b>			<b>45</b>	<b>45</b>	<b>98</b>	<b>5</b>	<b>13</b>

### Doultong

Site Code	Site Location	Speed Limit	Sessions		Vehicles		Vehicles Above Threshold		% Above Threshold		Av Speed of speeders		Top Speed		Letters		
			Mon	Yr	Mon	Yr	Mon	Yr	Mon	Yr	Mon	Yr	Mon	Yr	Mon	NFA	In Processing
ME0601	A361	30	1	45	721	11,645	15	160	2.1%	1.4%	40.3	41.8	49	57	-	0	15
ME0602	Chenlynch Road	30	0	7	0	319	0	17	-	5.3%	-	39.5	-	43	-		0
ME0606	Chenlynch Road	20	0	3	0	355	0	33	-	9.3%	-	34.4	-	46	-		0
	<b>Total</b>		<b>1</b>	<b>55</b>	<b>721</b>	<b>12,319</b>	<b>15</b>	<b>210</b>	<b>2.1%</b>	<b>1.7%</b>			<b>49</b>	<b>57</b>	<b>-</b>	<b>0</b>	<b>15</b>

### Evercreech

Site Code	Site Location	Speed Limit	Sessions		Vehicles		Vehicles Above Threshold		% Above Threshold		Av Speed of speeders		Top Speed		Letters		
			Mon	Yr	Mon	Yr	Mon	Yr	Mon	Yr	Mon	Yr	Mon	Yr	Mon	NFA	In Processing
ME0904	Horsehill Meadows	30	2	53	299	1,917	21	291	7.0%	15.2%	42.0	46.0	50	57	2	0	19
	<b>Total</b>		<b>2</b>	<b>53</b>	<b>299</b>	<b>1,917</b>	<b>21</b>	<b>291</b>	<b>7.0%</b>	<b>15.2%</b>			<b>50</b>	<b>57</b>	<b>2</b>	<b>0</b>	<b>19</b>

## Community SpeedWatch Monthly Report Sessions up to November 2020

Sessions Between 01/12/2019 to 30/11/2020

### Farleigh Hungerford

Site Code	Site Location	Speed Limit	Sessions		Vehicles		Vehicles Above Threshold		% Above Threshold		Av Speed of speeders		Top Speed		Letters		
			Mon	Yr	Mon	Yr	Mon	Yr	Mon	Yr	Mon	Yr	Mon	Yr	Mon	NFA	In Processing
ME1001	A366	30	0	83	0	10,871	0	905	-	8.3%	-	47.0	-	64	-		0
	<b>Total</b>		<b>0</b>	<b>83</b>		<b>10,871</b>	<b>0</b>	<b>905</b>	<b>-</b>	<b>8.3%</b>			<b>-</b>	<b>64</b>	<b>-</b>		<b>0</b>

### Frome

Site Code	Site Location	Speed Limit	Sessions		Vehicles		Vehicles Above Threshold		% Above Threshold		Av Speed of speeders		Top Speed		Letters		
			Mon	Yr	Mon	Yr	Mon	Yr	Mon	Yr	Mon	Yr	Mon	Yr	Mon	NFA	In Processing
ME1101	Berkely School	30	3	146	218	3,012	24	277	11.0%	9.2%	42.8	47.5	54	60	9	1	14
ME1103	B3092	30	0	7	0	141	0	10	-	7.1%	-	44.3	-	61	-		0
ME1104	Marston Road	30	0	9	0	528	0	16	-	3.0%	-	39.4	-	43	-		0
ME1105	Marston Lane	30	0	3	0	114	0	2	-	1.8%	-	39.5	-	40	-		0
ME1107	The Clink	30	2	11	456	1,437	9	36	2.0%	2.5%	41.5	42.2	46	51	7	0	2
ME1109	Bath Road (B3090)	30	3	75	346	4,940	19	263	5.5%	5.3%	39.8	44.1	43	51	9	1	9
ME1110	Styles Hill	30	9	141	2,693	12,361	58	460	2.2%	3.7%	41.0	43.4	48	61	45	4	9
ME1111	Warminster Road	30	1	43	151	2,807	13	214	8.6%	7.6%	44.3	45.9	57	58	10	1	2
	<b>Total</b>		<b>18</b>	<b>435</b>	<b>3,864</b>	<b>25,340</b>	<b>123</b>	<b>1,278</b>	<b>3.2%</b>	<b>5.0%</b>			<b>57</b>	<b>61</b>	<b>80</b>	<b>7</b>	<b>36</b>

## Community SpeedWatch Monthly Report Sessions up to November 2020

Sessions Between 01/12/2019 to 30/11/2020

### Glastonbury

Site Code	Site Location	Speed Limit	Sessions		Vehicles		Vehicles Above Threshold		% Above Threshold		Av Speed of speeders		Top Speed		Letters		
			Mon	Yr	Mon	Yr	Mon	Yr	Mon	Yr	Mon	Yr	Mon	Yr	Mon	NFA	In Processing
ME1201	Wells Road	30	0	10	0	88	0	14	-	15.9%	-	38.3	-	41	-		0
	<b>Total</b>		<b>0</b>	<b>10</b>		<b>88</b>	<b>0</b>	<b>14</b>	<b>-</b>	<b>15.9%</b>			<b>-</b>	<b>41</b>	<b>-</b>		<b>0</b>

### Henton

Site Code	Site Location	Speed Limit	Sessions		Vehicles		Vehicles Above Threshold		% Above Threshold		Av Speed of speeders		Top Speed		Letters		
			Mon	Yr	Mon	Yr	Mon	Yr	Mon	Yr	Mon	Yr	Mon	Yr	Mon	NFA	In Processing
ME3001	The Village Hall	30	1	20	67	860	1	24	1.5%	2.8%	36.0	38.7	36	42	-	1	0
ME3002	Bleadney House	30	2	14	220	1,332	3	35	1.4%	2.6%	36.5	40.0	37	47	1	0	2
ME3003	Henton House	30	4	21	451	1,143	26	71	5.8%	6.2%	39.5	40.2	43	46	6	5	15
ME3004	Wells Nursing Home	30	1	7	138	138	7	7	5.1%	5.1%	40.3	40.3	44	44	4	2	1
	<b>Total</b>		<b>8</b>	<b>62</b>	<b>876</b>	<b>3,473</b>	<b>37</b>	<b>137</b>	<b>4.2%</b>	<b>3.7%</b>			<b>44</b>	<b>47</b>	<b>11</b>	<b>8</b>	<b>18</b>

## Community SpeedWatch Monthly Report Sessions up to November 2020

Sessions Between 01/12/2019 to 30/11/2020

### Horrington

Site Code	Site Location	Speed Limit	Sessions		Vehicles		Vehicles Above Threshold		% Above Threshold		Av Speed of speeders		Top Speed		Letters		
			Mon	Yr	Mon	Yr	Mon	Yr	Mon	Yr	Mon	Yr	Mon	Yr	Mon	NFA	In Processing
ME0802	Farmers Joy	30	0	28	0	842	0	99	-	11.8%	-	42.9	-	55	-		0
ME0803	Horrington School	30	0	22	0	1,029	0	82	-	8.0%	-	43.5	-	55	-		0
ME0805	Gilbert Scott Road	30	0	1	0	133	0	8	-	6.0%	-	36.5	-	39	-		0
ME0806	Frome Road Farm	30	1	28	86	1,096	15	73	17.4%	6.7%	39.1	42.0	44	59	9	0	6
ME0807	Upper Breach	30	0	32	0	1,529	0	189	-	12.4%	-	44.8	-	58	-		0
<b>Total</b>			<b>1</b>	<b>111</b>	<b>86</b>	<b>4,629</b>	<b>15</b>	<b>451</b>	<b>17.4%</b>	<b>9.6%</b>			<b>44</b>	<b>59</b>	<b>9</b>	<b>0</b>	<b>6</b>

### Lydford on the Fosse

Site Code	Site Location	Speed Limit	Sessions		Vehicles		Vehicles Above Threshold		% Above Threshold		Av Speed of speeders		Top Speed		Letters		
			Mon	Yr	Mon	Yr	Mon	Yr	Mon	Yr	Mon	Yr	Mon	Yr	Mon	NFA	In Processing
ME1401	A37 (30mph)	30	0	11	0	3,087	0	98	-	3.2%	-	43.9	-	58	-		0
ME1402	A37 (40mph)	40	0	4	0	1,197	0	2	-	0.2%	-	48.0	-	49	-		0
ME1403	B3153	30	0	148	0	12,227	0	362	-	3.0%	-	44.9	-	58	-		0
ME1404	Lydford Village 2	40	0	39	0	3,220	0	20	-	0.6%	-	52.4	-	60	-		0
<b>Total</b>			<b>0</b>	<b>202</b>		<b>19,731</b>	<b>0</b>	<b>482</b>	<b>-</b>	<b>2.4%</b>			<b>-</b>	<b>60</b>	<b>-</b>		<b>0</b>

## Community SpeedWatch Monthly Report Sessions up to November 2020

Sessions Between 01/12/2019 to 30/11/2020

### Meare and Westhay

Site Code	Site Location	Speed Limit	Sessions		Vehicles		Vehicles Above Threshold		% Above Threshold		Av Speed of speeders		Top Speed		Letters		
			Mon	Yr	Mon	Yr	Mon	Yr	Mon	Yr	Mon	Yr	Mon	Yr	Mon	NFA	In Processing
ME3801	B3151	30	0	2	0	406	0	0	-	0.0%	-	30.0	-	30	-		0
ME3802	Main Road (B3151)	30	0	2	0	341	0	10	-	2.9%	-	38.3	-	44	-		0
	<b>Total</b>		<b>0</b>	<b>4</b>		<b>747</b>	<b>0</b>	<b>10</b>	<b>-</b>	<b>1.3%</b>			<b>-</b>	<b>44</b>	<b>-</b>		<b>0</b>

### Mells

Site Code	Site Location	Speed Limit	Sessions		Vehicles		Vehicles Above Threshold		% Above Threshold		Av Speed of speeders		Top Speed		Letters		
			Mon	Yr	Mon	Yr	Mon	Yr	Mon	Yr	Mon	Yr	Mon	Yr	Mon	NFA	In Processing
ME1501	Holes Lane	30	0	11	0	136	0	23	-	16.9%	-	44.1	-	55	-		0
	<b>Total</b>		<b>0</b>	<b>11</b>		<b>136</b>	<b>0</b>	<b>23</b>	<b>-</b>	<b>16.9%</b>			<b>-</b>	<b>55</b>	<b>-</b>		<b>0</b>

### Norton St Philip

Site Code	Site Location	Speed Limit	Sessions		Vehicles		Vehicles Above Threshold		% Above Threshold		Av Speed of speeders		Top Speed		Letters		
			Mon	Yr	Mon	Yr	Mon	Yr	Mon	Yr	Mon	Yr	Mon	Yr	Mon	NFA	In Processing
ME0106	Bath Road (Monmouth Paddock)	20	0	6	0	401	0	29	-	7.2%	-	28.0	-	30	-		0
ME0108	Church Street	20	3	28	460	4,569	97	527	21.1%	11.5%	31.5	34.8	38	47	48	3	46
	<b>Total</b>		<b>3</b>	<b>34</b>	<b>460</b>	<b>4,970</b>	<b>97</b>	<b>556</b>	<b>21.1%</b>	<b>11.2%</b>			<b>38</b>	<b>47</b>	<b>48</b>	<b>3</b>	<b>46</b>

## Community SpeedWatch Monthly Report Sessions up to November 2020

Sessions Between 01/12/2019 to 30/11/2020

### Pilton

Site Code	Site Location	Speed Limit	Sessions		Vehicles		Vehicles Above Threshold		% Above Threshold		Av Speed of speeders		Top Speed		Letters		
			Mon	Yr	Mon	Yr	Mon	Yr	Mon	Yr	Mon	Yr	Mon	Yr	Mon	NFA	In Processing
ME2501	A361 (Whitestone Road)	30	0	12	0	2,011	0	24	-	1.2%	-	40.0	-	46	-		0
ME2502	A361 (B3136)	30	0	58	0	9,017	0	505	-	5.6%	-	47.0	-	58	-		0
ME2505	A361 (Park Hill)	30	0	3	0	1,524	0	52	-	3.4%	-	42.0	-	50	-		0
<b>Total</b>			<b>0</b>	<b>73</b>		<b>12,552</b>	<b>0</b>	<b>581</b>	<b>-</b>	<b>4.6%</b>			<b>-</b>	<b>58</b>	<b>-</b>		<b>0</b>

### Rode

Site Code	Site Location	Speed Limit	Sessions		Vehicles		Vehicles Above Threshold		% Above Threshold		Av Speed of speeders		Top Speed		Letters		
			Mon	Yr	Mon	Yr	Mon	Yr	Mon	Yr	Mon	Yr	Mon	Yr	Mon	NFA	In Processing
ME1801	Rode Hill - Lower	30	5	40	809	5,453	17	227	2.1%	4.2%	40.2	44.3	45	54	12	1	4
ME1803	Bradford Road	30	2	29	984	3,574	17	313	1.7%	8.8%	39.8	42.3	44	50	15	0	2
<b>Total</b>			<b>7</b>	<b>69</b>	<b>1,793</b>	<b>9,027</b>	<b>34</b>	<b>540</b>	<b>1.9%</b>	<b>6.0%</b>			<b>45</b>	<b>54</b>	<b>27</b>	<b>1</b>	<b>6</b>



## Community SpeedWatch Monthly Report Sessions up to November 2020

Sessions Between 01/12/2019 to 30/11/2020

### Rodney Stoke

Site Code	Site Location	Speed Limit	Sessions		Vehicles		Vehicles Above Threshold		% Above Threshold		Av Speed of speeders		Top Speed		Letters		
			Mon	Yr	Mon	Yr	Mon	Yr	Mon	Yr	Mon	Yr	Mon	Yr	Mon	NFA	In Processing
ME3101	A371 (Rodney Stoke Garage)	30	0	8	0	443	0	8	-	1.8%	-	39.6	-	42	-		0
ME3104	Millway (Millway Cottage)	20	1	21	10	138	1	39	10.0%	28.3%	30.0	32.7	30	42	-	0	1
ME3105	Millway (South Hele)	20	1	3	8	18	1	2	12.5%	11.1%	34.0	35.5	34	37	-	1	0
<b>Total</b>			<b>2</b>	<b>32</b>	<b>18</b>	<b>599</b>	<b>2</b>	<b>49</b>	<b>11.1%</b>	<b>7.8%</b>			<b>34</b>	<b>42</b>	<b>-</b>	<b>1</b>	<b>1</b>

### Shepton Mallet

Site Code	Site Location	Speed Limit	Sessions		Vehicles		Vehicles Above Threshold		% Above Threshold		Av Speed of speeders		Top Speed		Letters		
			Mon	Yr	Mon	Yr	Mon	Yr	Mon	Yr	Mon	Yr	Mon	Yr	Mon	NFA	In Processing
ME1904	Fosse Lane	30	0	4	0	419	0	6	-	1.4%	-	37.5	-	39	-		0
ME1905	Old Wells Road	30	0	2	0	162	0	3	-	1.9%	-	38.0	-	39	-		0
ME1906	West Shepton	30	0	2	0	128	0	5	-	3.9%	-	36.5	-	37	-		0
ME1910	Whitestone Road (Whitstone Rise)	30	0	1	0	334	0	7	-	2.1%	-	38.3	-	40	-		0
<b>Total</b>			<b>0</b>	<b>9</b>		<b>1,043</b>	<b>0</b>	<b>21</b>	<b>-</b>	<b>2.0%</b>			<b>-</b>	<b>40</b>	<b>-</b>		<b>0</b>

## Community SpeedWatch Monthly Report Sessions up to November 2020

Sessions Between 01/12/2019 to 30/11/2020

### Trudoxhill

Site Code	Site Location	Speed Limit	Sessions		Vehicles		Vehicles Above Threshold		% Above Threshold		Av Speed of speeders		Top Speed		Letters		
			Mon	Yr	Mon	Yr	Mon	Yr	Mon	Yr	Mon	Yr	Mon	Yr	Mon	NFA	In Processing
ME2901	Westend Lane	30	2	22	196	933	4	26	2.0%	2.8%	33.0	36.0	36	40	-	0	4
ME2903	Wyland	30	1	23	78	1,093	2	18	2.6%	1.6%	37.0	39.3	37	51	-	1	1
ME2904	West End Lane	30	0	1	0	67	0	12	-	17.9%	-	39.3	-	45	-	-	0
<b>Total</b>			<b>3</b>	<b>46</b>	<b>274</b>	<b>2,093</b>	<b>6</b>	<b>56</b>	<b>2.2%</b>	<b>2.7%</b>			<b>37</b>	<b>51</b>	<b>-</b>	<b>1</b>	<b>5</b>

### Walton

Site Code	Site Location	Speed Limit	Sessions		Vehicles		Vehicles Above Threshold		% Above Threshold		Av Speed of speeders		Top Speed		Letters		
			Mon	Yr	Mon	Yr	Mon	Yr	Mon	Yr	Mon	Yr	Mon	Yr	Mon	NFA	In Processing
ME3701	Mildred Road	30	2	15	1,931	13,090	34	159	1.8%	1.2%	40.6	40.6	47	47	29	4	1
ME3702	Main Street	30	0	8	0	5,626	0	22	-	0.4%	-	38.5	-	47	-	-	0
<b>Total</b>			<b>2</b>	<b>23</b>	<b>1,931</b>	<b>18,716</b>	<b>34</b>	<b>181</b>	<b>1.8%</b>	<b>1.0%</b>			<b>47</b>	<b>47</b>	<b>29</b>	<b>4</b>	<b>1</b>

### Wanstrow

Site Code	Site Location	Speed Limit	Sessions		Vehicles		Vehicles Above Threshold		% Above Threshold		Av Speed of speeders		Top Speed		Letters		
			Mon	Yr	Mon	Yr	Mon	Yr	Mon	Yr	Mon	Yr	Mon	Yr	Mon	NFA	In Processing
ME2201	A359	30	1	20	227	5,216	11	264	4.8%	5.1%	42.3	45.0	52	54	7	0	4
<b>Total</b>			<b>1</b>	<b>20</b>	<b>227</b>	<b>5,216</b>	<b>11</b>	<b>264</b>	<b>4.8%</b>	<b>5.1%</b>			<b>52</b>	<b>54</b>	<b>7</b>	<b>0</b>	<b>4</b>

## Community SpeedWatch Monthly Report Sessions up to November 2020

### North Somerset

Sessions Between 01/12/2019 to 30/11/2020

#### Blagdon

Site Code	Site Location	Speed Limit	Sessions		Vehicles		Vehicles Above Threshold		% Above Threshold		Av Speed of speeders		Top Speed		Letters		
			Mon	Yr	Mon	Yr	Mon	Yr	Mon	Yr	Mon	Yr	Mon	Yr	Mon	NFA	In Processing
NS0601	Bath Road (30 pmh)	30	5	8	455	598	11	12	2.4%	2.0%	38.8	38.8	43	43	9	2	0
NS0602	Bath Road (20mph)	20	11	14	892	1,035	109	120	12.2%	11.6%	31.8	31.8	40	40	100	8	1
	<b>Total</b>		<b>16</b>	<b>22</b>	<b>1,347</b>	<b>1,633</b>	<b>118</b>	<b>132</b>	<b>8.8%</b>	<b>8.0%</b>			<b>43</b>	<b>43</b>	<b>109</b>	<b>10</b>	<b>1</b>

#### Cleeve

Site Code	Site Location	Speed Limit	Sessions		Vehicles		Vehicles Above Threshold		% Above Threshold		Av Speed of speeders		Top Speed		Letters		
			Mon	Yr	Mon	Yr	Mon	Yr	Mon	Yr	Mon	Yr	Mon	Yr	Mon	NFA	In Processing
NS1903	Bishops Road	30	0	10	0	303	0	3	-	1.0%	-	35.5	-	41	-		0
NS1904	Main Road	30	0	10	0	778	0	2	-	0.3%	-	47.5	-	48	-		0
	<b>Total</b>		<b>0</b>	<b>20</b>		<b>1,081</b>	<b>0</b>	<b>5</b>	<b>-</b>	<b>0.5%</b>			<b>-</b>	<b>48</b>	<b>-</b>		<b>0</b>

#### Clevedon

Site Code	Site Location	Speed Limit	Sessions		Vehicles		Vehicles Above Threshold		% Above Threshold		Av Speed of speeders		Top Speed		Letters		
			Mon	Yr	Mon	Yr	Mon	Yr	Mon	Yr	Mon	Yr	Mon	Yr	Mon	NFA	In Processing
NS0915	B3133 (Barnes Ground)	30	2	4	1,337	2,702	11	30	0.8%	1.1%	39.3	40.0	43	44	6	5	0
	<b>Total</b>		<b>2</b>	<b>4</b>	<b>1,337</b>	<b>2,702</b>	<b>11</b>	<b>30</b>	<b>0.8%</b>	<b>1.1%</b>			<b>43</b>	<b>44</b>	<b>6</b>	<b>5</b>	<b>0</b>

## Community SpeedWatch Monthly Report Sessions up to November 2020

### Elborough

Site Code	Site Location	Speed Limit	Sessions		Vehicles		Vehicles Above Threshold		% Above Threshold		Av Speed of speeders		Top Speed		Letters		
			Mon	Yr	Mon	Yr	Mon	Yr	Mon	Yr	Mon	Yr	Mon	Yr	Mon	NFA	In Processing
NS2202	Banwell Road (Hillend)	30	2	9	409	1,972	21	104	5.1%	5.3%	40.5	42.0	46	48	17	2	2
	<b>Total</b>		<b>2</b>	<b>9</b>	<b>409</b>	<b>1,972</b>	<b>21</b>	<b>104</b>	<b>5.1%</b>	<b>5.3%</b>			<b>46</b>	<b>48</b>	<b>17</b>	<b>2</b>	<b>2</b>

### Hutton

Site Code	Site Location	Speed Limit	Sessions		Vehicles		Vehicles Above Threshold		% Above Threshold		Av Speed of speeders		Top Speed		Letters		
			Mon	Yr	Mon	Yr	Mon	Yr	Mon	Yr	Mon	Yr	Mon	Yr	Mon	NFA	In Processing
NS1207	Oldmixon Road (Narrows)	30	2	31	511	3,049	30	99	5.9%	3.2%	40.0	40.6	47	47	24	4	2
	<b>Total</b>		<b>2</b>	<b>31</b>	<b>511</b>	<b>3,049</b>	<b>30</b>	<b>99</b>	<b>5.9%</b>	<b>3.2%</b>			<b>47</b>	<b>47</b>	<b>24</b>	<b>4</b>	<b>2</b>

### Locking Castle

Site Code	Site Location	Speed Limit	Sessions		Vehicles		Vehicles Above Threshold		% Above Threshold		Av Speed of speeders		Top Speed		Letters		
			Mon	Yr	Mon	Yr	Mon	Yr	Mon	Yr	Mon	Yr	Mon	Yr	Mon	NFA	In Processing
NS1801	Maltings	20	1	39	149	910	19	82	12.8%	9.0%	30.8	32.7	37	43	15	1	3
	<b>Total</b>		<b>1</b>	<b>39</b>	<b>149</b>	<b>910</b>	<b>19</b>	<b>82</b>	<b>12.8%</b>	<b>9.0%</b>			<b>37</b>	<b>43</b>	<b>15</b>	<b>1</b>	<b>3</b>

## Community SpeedWatch Monthly Report Sessions up to November 2020

### Nailsea

Site Code	Site Location	Speed Limit	Sessions		Vehicles		Vehicles Above Threshold		% Above Threshold		Av Speed of speeders		Top Speed		Letters		
			Mon	Yr	Mon	Yr	Mon	Yr	Mon	Yr	Mon	Yr	Mon	Yr	Mon	NFA	In Processing
NS0302	Nailsea Park Road (Grassed area)	30	2	51	481	4,335	21	212	4.4%	4.9%	39.1	42.1	43	65	18	3	0
NS0305	Clevedon Road	30	1	10	444	651	12	15	2.7%	2.3%	38.8	37.7	42	42	10	2	0
NS0307	Queens Road	40	1	11	206	820	1	6	0.5%	0.7%	52.0	45.8	52	52	1	0	0
NS0309	Stockway South	30	1	4	65	216	1	4	1.5%	1.9%	36.0	36.5	36	37	1	0	0
NS0310	Stockway North (F/Ship)	30	1	4	261	447	4	13	1.5%	2.9%	36.5	39.5	37	45	4	0	0
NS0311	Stockway North - North Side	30	1	2	73	206	7	11	9.6%	5.3%	37.5	38.6	39	43	6	1	0
NS0314	High Street (Lamp post 17)	30	0	14	0	559	0	2	-	0.4%	-	36.0	-	36	-	-	0
<b>Total</b>			<b>7</b>	<b>96</b>	<b>1,530</b>	<b>7,234</b>	<b>46</b>	<b>263</b>	<b>3.0%</b>	<b>3.6%</b>			<b>52</b>	<b>65</b>	<b>40</b>	<b>6</b>	<b>0</b>

### Portishead

Site Code	Site Location	Speed Limit	Sessions		Vehicles		Vehicles Above Threshold		% Above Threshold		Av Speed of speeders		Top Speed		Letters		
			Mon	Yr	Mon	Yr	Mon	Yr	Mon	Yr	Mon	Yr	Mon	Yr	Mon	NFA	In Processing
NS0401	Down Road (Charlcombe Rise)	30	0	1	0	999	0	1	-	0.1%	-	99.0	-	99	-	-	0
<b>Total</b>			<b>0</b>	<b>1</b>		<b>999</b>	<b>0</b>	<b>1</b>	<b>-</b>	<b>0.1%</b>			<b>-</b>	<b>99</b>	<b>-</b>		<b>0</b>

### Walton-in-Gordano

Site Code	Site Location	Speed Limit	Sessions		Vehicles		Vehicles Above Threshold		% Above Threshold		Av Speed of speeders		Top Speed		Letters		
			Mon	Yr	Mon	Yr	Mon	Yr	Mon	Yr	Mon	Yr	Mon	Yr	Mon	NFA	In Processing
NS1701	B3124	30	1	8	495	4,308	28	176	5.7%	4.1%	41.6	44.6	49	54	21	5	2
NS1702	B3124 (Adjacent to Plum Tree Cottage)	30	2	36	912	6,288	55	278	6.0%	4.4%	41.9	44.4	54	55	49	3	3
<b>Total</b>			<b>3</b>	<b>44</b>	<b>1,407</b>	<b>10,596</b>	<b>83</b>	<b>454</b>	<b>5.9%</b>	<b>4.3%</b>			<b>54</b>	<b>55</b>	<b>70</b>	<b>8</b>	<b>5</b>

## Community SpeedWatch Monthly Report Sessions up to November 2020

### Wrington

Site Code	Site Location	Speed Limit	Sessions		Vehicles		Vehicles Above Threshold		% Above Threshold		Av Speed of speeders		Top Speed		Letters		
			Mon	Yr	Mon	Yr	Mon	Yr	Mon	Yr	Mon	Yr	Mon	Yr	Mon	NFA	In Processing
NS1602	West Hay Road	30	2	38	254	2,193	8	96	3.1%	4.4%	48.0	46.0	65	66	7	0	1
NS1603	Butts Batch	30	0	11	0	414	0	13	-	3.1%	-	38.0	-	41	-		0
NS1606	Long Lane	30	1	17	102	1,023	6	71	5.9%	6.9%	37.5	42.1	39	50	3	2	1
<b>Total</b>			<b>3</b>	<b>66</b>	<b>356</b>	<b>3,630</b>	<b>14</b>	<b>180</b>	<b>3.9%</b>	<b>4.9%</b>			<b>65</b>	<b>66</b>	<b>10</b>	<b>2</b>	<b>2</b>

### Yatton

Site Code	Site Location	Speed Limit	Sessions		Vehicles		Vehicles Above Threshold		% Above Threshold		Av Speed of speeders		Top Speed		Letters		
			Mon	Yr	Mon	Yr	Mon	Yr	Mon	Yr	Mon	Yr	Mon	Yr	Mon	NFA	In Processing
NS0203	Frost Hill	30	2	32	1,558	11,417	10	37	0.6%	0.3%	39.3	39.3	43	47	3	4	3
NS0204	Dairy Close	30	1	26	538	7,764	2	37	0.4%	0.5%	38.5	38.5	39	45	1	1	0
NS0206	Claverham Road	30	1	20	188	1,472	0	14	0.0%	1.0%	30.0	39.5	30	54	-	1	-1
NS0207	Henley Lane	30	0	1	0	430	0	0	-	0.0%	-	40.0	-	40	-		0
NS0210	North End - Red brick house	40	2	22	977	4,819	2	9	0.2%	0.2%	48.0	47.5	49	55	-	2	0
<b>Total</b>			<b>6</b>	<b>101</b>	<b>3,261</b>	<b>25,902</b>	<b>14</b>	<b>97</b>	<b>0.4%</b>	<b>0.4%</b>			<b>49</b>	<b>55</b>	<b>4</b>	<b>8</b>	<b>2</b>

### Somerset West

*Sessions Between 02/12/2019 to 30/11/2020*

## Community SpeedWatch Monthly Report Sessions up to November 2020

Sessions Between 02/12/2019 to 30/11/2020

### Axbridge

Site Code	Site Location	Speed Limit	Sessions		Vehicles		Vehicles Above Threshold		% Above Threshold		Av Speed of speeders		Top Speed		Letters		
			Mon	Yr	Mon	Yr	Mon	Yr	Mon	Yr	Mon	Yr	Mon	Yr	Mon	NFA	In Processing
WS4103	St Mary's Street (Lower Frys)	20	0	2	0	232	0	11	-	4.7%	-	27.8	-	32	-		0
	<b>Total</b>		<b>0</b>	<b>2</b>		<b>232</b>	<b>0</b>	<b>11</b>	<b>-</b>	<b>4.7%</b>			<b>-</b>	<b>32</b>	<b>-</b>		<b>0</b>

### Berrow

Site Code	Site Location	Speed Limit	Sessions		Vehicles		Vehicles Above Threshold		% Above Threshold		Av Speed of speeders		Top Speed		Letters		
			Mon	Yr	Mon	Yr	Mon	Yr	Mon	Yr	Mon	Yr	Mon	Yr	Mon	NFA	In Processing
WS0201	Coast Road / Hurn Lane Jnct	30	4	53	821	9,960	46	242	5.6%	2.4%	40.0	42.7	45	52	26	21	-1
WS0202	Coast Road	30	0	4	0	407	0	11	-	2.7%	-	38.2	-	41	-		0
	<b>Total</b>		<b>4</b>	<b>57</b>	<b>821</b>	<b>10,367</b>	<b>46</b>	<b>253</b>	<b>5.6%</b>	<b>2.4%</b>			<b>45</b>	<b>52</b>	<b>26</b>	<b>21</b>	<b>-1</b>

### Bishops Hull

Site Code	Site Location	Speed Limit	Sessions		Vehicles		Vehicles Above Threshold		% Above Threshold		Av Speed of speeders		Top Speed		Letters		
			Mon	Yr	Mon	Yr	Mon	Yr	Mon	Yr	Mon	Yr	Mon	Yr	Mon	NFA	In Processing
WS2901	Bishops Hull Road	20	1	10	129	483	12	43	9.3%	8.9%	28.0	29.6	31	34	9	1	2
WS2904	Silk Mill Road	30	2	30	1,138	8,922	66	417	5.8%	4.7%	41.1	41.8	48	57	42	18	6
	<b>Total</b>		<b>3</b>	<b>40</b>	<b>1,267</b>	<b>9,405</b>	<b>78</b>	<b>460</b>	<b>6.2%</b>	<b>4.9%</b>			<b>48</b>	<b>57</b>	<b>51</b>	<b>19</b>	<b>8</b>

## Community SpeedWatch Monthly Report Sessions up to November 2020

Sessions Between 02/12/2019 to 30/11/2020

### Blue Anchor

Site Code	Site Location	Speed Limit	Sessions		Vehicles		Vehicles Above Threshold		% Above Threshold		Av Speed of speeders		Top Speed		Letters		
			Mon	Yr	Mon	Yr	Mon	Yr	Mon	Yr	Mon	Yr	Mon	Yr	Mon	NFA	In Processing
WS6201	B3191 (Grove Lane)	30	0	6	0	292	0	8	-	2.7%	-	34.8	-	38	-		0
WS6202	B3191 (Grove House)	30	6	28	240	1,422	19	84	7.9%	5.9%	38.0	37.5	40	41	13	1	5
	<b>Total</b>		<b>6</b>	<b>34</b>	<b>240</b>	<b>1,714</b>	<b>19</b>	<b>92</b>	<b>7.9%</b>	<b>5.3%</b>			<b>40</b>	<b>41</b>	<b>13</b>	<b>1</b>	<b>5</b>

### Brent Knoll

Site Code	Site Location	Speed Limit	Sessions		Vehicles		Vehicles Above Threshold		% Above Threshold		Av Speed of speeders		Top Speed		Letters		
			Mon	Yr	Mon	Yr	Mon	Yr	Mon	Yr	Mon	Yr	Mon	Yr	Mon	NFA	In Processing
WS0408	Ham Road (Ham Farm)	30	3	25	148	1,518	6	53	4.1%	3.5%	37.6	38.8	42	49	3	3	0
WS0409	Burton Road (Pink Thyme)	30	7	52	842	7,272	62	505	7.4%	6.9%	41.0	43.9	50	62	57	4	1
	<b>Total</b>		<b>10</b>	<b>77</b>	<b>990</b>	<b>8,790</b>	<b>68</b>	<b>558</b>	<b>6.9%</b>	<b>6.3%</b>			<b>50</b>	<b>62</b>	<b>60</b>	<b>7</b>	<b>1</b>



## Community SpeedWatch Monthly Report Sessions up to November 2020

Sessions Between 02/12/2019 to 30/11/2020

### Carhampton

Site Code	Site Location	Speed Limit	Sessions		Vehicles		Vehicles Above Threshold		% Above Threshold		Av Speed of speeders		Top Speed		Letters		
			Mon	Yr	Mon	Yr	Mon	Yr	Mon	Yr	Mon	Yr	Mon	Yr	Mon	NFA	In Processing
WS5801	A39 (Butchers Arms)	30	0	4	0	1,833	0	13	-	0.7%	-	35.5	-	37	-		0
WS5802	A39 (Chris Crackers Yard)	30	8	25	6,298	17,490	267	768	4.2%	4.4%	41.0	41.6	48	54	214	35	18
WS5803	A39 (Windsors Lane)	30	1	34	855	13,597	18	511	2.1%	3.8%	37.7	37.2	43	49	16	2	0
WS5804	A39 (Park Lane)	30	0	9	0	4,689	0	63	-	1.3%	-	39.1	-	50	-		0
	<b>Total</b>		<b>9</b>	<b>72</b>	<b>7,153</b>	<b>37,609</b>	<b>285</b>	<b>1,355</b>	<b>4.0%</b>	<b>3.5%</b>			<b>48</b>	<b>54</b>	<b>230</b>	<b>37</b>	<b>18</b>

### Cheddar

Site Code	Site Location	Speed Limit	Sessions		Vehicles		Vehicles Above Threshold		% Above Threshold		Av Speed of speeders		Top Speed		Letters		
			Mon	Yr	Mon	Yr	Mon	Yr	Mon	Yr	Mon	Yr	Mon	Yr	Mon	NFA	In Processing
WS0104	Cheddar Cliffs	30	0	4	0	1,336	0	2	-	0.1%	-	36.5	-	45	-		0
WS0105	Tweentown	30	0	4	0	827	0	3	-	0.4%	-	41.7	-	46	-		0
WS0106	Upper New Road	30	0	11	0	2,519	0	67	-	2.7%	-	42.2	-	49	-		0
WS0107	Wideatts Road	30	0	8	0	2,242	0	24	-	1.1%	-	39.5	-	42	-		0
WS0108	The Hayes	20	1	9	75	663	10	74	13.3%	11.2%	28.4	31.3	32	42	7	1	2
WS0109	A371 - Upper New Road	30	0	1	0	885	0	9	-	1.0%	-	41.2	-	49	-		0
WS0110	Wedmore Road	30	1	1	350	350	2	2	0.6%	0.6%	36.0	36.0	36	36	2	0	0
	<b>Total</b>		<b>2</b>	<b>38</b>	<b>425</b>	<b>8,822</b>	<b>12</b>	<b>181</b>	<b>2.8%</b>	<b>2.1%</b>			<b>36</b>	<b>49</b>	<b>9</b>	<b>1</b>	<b>2</b>

## Community SpeedWatch Monthly Report Sessions up to November 2020

Sessions Between 02/12/2019 to 30/11/2020

### Chipley

Site Code	Site Location	Speed Limit	Sessions		Vehicles		Vehicles Above Threshold		% Above Threshold		Av Speed of speeders		Top Speed		Letters		
			Mon	Yr	Mon	Yr	Mon	Yr	Mon	Yr	Mon	Yr	Mon	Yr	Mon	NFA	In Processing
WS0701	Chipley Rosemary Cottage	30	0	7	0	263	0	10	-	3.8%	-	36.8	-	42	-		0
	<b>Total</b>		<b>0</b>	<b>7</b>		<b>263</b>	<b>0</b>	<b>10</b>	<b>-</b>	<b>3.8%</b>			<b>-</b>	<b>42</b>	<b>-</b>		<b>0</b>

### Corfe

Site Code	Site Location	Speed Limit	Sessions		Vehicles		Vehicles Above Threshold		% Above Threshold		Av Speed of speeders		Top Speed		Letters		
			Mon	Yr	Mon	Yr	Mon	Yr	Mon	Yr	Mon	Yr	Mon	Yr	Mon	NFA	In Processing
WS0801	B3170 (Wembury House)	30	3	23	552	4,300	11	163	2.0%	3.8%	39.0	43.4	41	53	8	3	0
WS0802	B3170 (Pickeridge Cottage)	30	7	13	1,201	2,470	87	126	7.2%	5.1%	42.5	42.5	48	48	52	28	7
	<b>Total</b>		<b>10</b>	<b>36</b>	<b>1,753</b>	<b>6,770</b>	<b>98</b>	<b>289</b>	<b>5.6%</b>	<b>4.2%</b>			<b>48</b>	<b>53</b>	<b>60</b>	<b>31</b>	<b>7</b>

### East Lyng

Site Code	Site Location	Speed Limit	Sessions		Vehicles		Vehicles Above Threshold		% Above Threshold		Av Speed of speeders		Top Speed		Letters		
			Mon	Yr	Mon	Yr	Mon	Yr	Mon	Yr	Mon	Yr	Mon	Yr	Mon	NFA	In Processing
WS0902	Orchard View	30	1	33	251	3,327	13	133	5.2%	4.0%	42.6	45.8	50	62	8	3	2
WS0904	Herons Ghyll	30	2	14	703	2,249	23	46	3.3%	2.0%	40.1	40.1	45	45	15	7	1
	<b>Total</b>		<b>3</b>	<b>47</b>	<b>954</b>	<b>5,576</b>	<b>36</b>	<b>179</b>	<b>3.8%</b>	<b>3.2%</b>			<b>50</b>	<b>62</b>	<b>23</b>	<b>10</b>	<b>3</b>

## Community SpeedWatch Monthly Report Sessions up to November 2020

Sessions Between 02/12/2019 to 30/11/2020

### Enmore

Site Code	Site Location	Speed Limit	Sessions		Vehicles		Vehicles Above Threshold		% Above Threshold		Av Speed of speeders		Top Speed		Letters		
			Mon	Yr	Mon	Yr	Mon	Yr	Mon	Yr	Mon	Yr	Mon	Yr	Mon	NFA	In Processing
WS1001	Lexworthy Farm	30	2	21	263	1,001	23	97	8.7%	9.7%	40.8	43.7	45	60	14	8	1
	<b>Total</b>		<b>2</b>	<b>21</b>	<b>263</b>	<b>1,001</b>	<b>23</b>	<b>97</b>	<b>8.7%</b>	<b>9.7%</b>			<b>45</b>	<b>60</b>	<b>14</b>	<b>8</b>	<b>1</b>

### Exton and Bridgetown

Site Code	Site Location	Speed Limit	Sessions		Vehicles		Vehicles Above Threshold		% Above Threshold		Av Speed of speeders		Top Speed		Letters		
			Mon	Yr	Mon	Yr	Mon	Yr	Mon	Yr	Mon	Yr	Mon	Yr	Mon	NFA	In Processing
WS4502	A396 (Badgers Holt)	30	0	4	0	173	0	9	-	5.2%	-	38.8	-	41	-		0
	<b>Total</b>		<b>0</b>	<b>4</b>		<b>173</b>	<b>0</b>	<b>9</b>	<b>-</b>	<b>5.2%</b>			<b>-</b>	<b>41</b>	<b>-</b>		<b>0</b>

### Hamp (Bridgwater)

Site Code	Site Location	Speed Limit	Sessions		Vehicles		Vehicles Above Threshold		% Above Threshold		Av Speed of speeders		Top Speed		Letters		
			Mon	Yr	Mon	Yr	Mon	Yr	Mon	Yr	Mon	Yr	Mon	Yr	Mon	NFA	In Processing
WS5701	Wills Road	30	0	5	0	303	0	23	-	7.6%	-	39.4	-	45	-		0
	<b>Total</b>		<b>0</b>	<b>5</b>		<b>303</b>	<b>0</b>	<b>23</b>	<b>-</b>	<b>7.6%</b>			<b>-</b>	<b>45</b>	<b>-</b>		<b>0</b>

## Community SpeedWatch Monthly Report Sessions up to November 2020

Sessions Between 02/12/2019 to 30/11/2020

### Hillcommon & Oake

Site Code	Site Location	Speed Limit	Sessions		Vehicles		Vehicles Above Threshold		% Above Threshold		Av Speed of speeders		Top Speed		Letters		
			Mon	Yr	Mon	Yr	Mon	Yr	Mon	Yr	Mon	Yr	Mon	Yr	Mon	NFA	In Processing
WS1101	Dayyem	30	0	6	0	598	0	13	-	2.2%	-	41.5	-	48	-		0
	<b>Total</b>		<b>0</b>	<b>6</b>		<b>598</b>	<b>0</b>	<b>13</b>	<b>-</b>	<b>2.2%</b>			<b>-</b>	<b>48</b>	<b>-</b>		<b>0</b>

### Holford

Site Code	Site Location	Speed Limit	Sessions		Vehicles		Vehicles Above Threshold		% Above Threshold		Av Speed of speeders		Top Speed		Letters		
			Mon	Yr	Mon	Yr	Mon	Yr	Mon	Yr	Mon	Yr	Mon	Yr	Mon	NFA	In Processing
WS6402	A39 (Plough Inn)	30	5	10	815	2,099	26	56	3.2%	2.7%	41.4	43.2	50	51	17	8	1
	<b>Total</b>		<b>5</b>	<b>10</b>	<b>815</b>	<b>2,099</b>	<b>26</b>	<b>56</b>	<b>3.2%</b>	<b>2.7%</b>			<b>50</b>	<b>51</b>	<b>17</b>	<b>8</b>	<b>1</b>

### Holway

Site Code	Site Location	Speed Limit	Sessions		Vehicles		Vehicles Above Threshold		% Above Threshold		Av Speed of speeders		Top Speed		Letters		
			Mon	Yr	Mon	Yr	Mon	Yr	Mon	Yr	Mon	Yr	Mon	Yr	Mon	NFA	In Processing
WS1201	Chestnut Drive	30	1	12	478	3,453	3	37	0.6%	1.1%	39.7	42.0	43	53	3	0	0
WS1205	Holway Road	30	0	9	0	1,116	0	21	-	1.9%	-	39.3	-	44	-		0
	<b>Total</b>		<b>1</b>	<b>21</b>	<b>478</b>	<b>4,569</b>	<b>3</b>	<b>58</b>	<b>0.6%</b>	<b>1.3%</b>			<b>43</b>	<b>53</b>	<b>3</b>	<b>0</b>	<b>0</b>

## Community SpeedWatch Monthly Report Sessions up to November 2020

Sessions Between 02/12/2019 to 30/11/2020

### Holywell Lake

Site Code	Site Location	Speed Limit	Sessions		Vehicles		Vehicles Above Threshold		% Above Threshold		Av Speed of speeders		Top Speed		Letters		
			Mon	Yr	Mon	Yr	Mon	Yr	Mon	Yr	Mon	Yr	Mon	Yr	Mon	NFA	In Processing
WS3101	The Holloway (Gorsty Hayes)	30	0	5	0	113	0	1	-	0.9%	-	35.0	-	35	-		0
	<b>Total</b>		<b>0</b>	<b>5</b>		<b>113</b>	<b>0</b>	<b>1</b>	<b>-</b>	<b>0.9%</b>			<b>-</b>	<b>35</b>	<b>-</b>		<b>0</b>

### Kingston St Mary

Site Code	Site Location	Speed Limit	Sessions		Vehicles		Vehicles Above Threshold		% Above Threshold		Av Speed of speeders		Top Speed		Letters		
			Mon	Yr	Mon	Yr	Mon	Yr	Mon	Yr	Mon	Yr	Mon	Yr	Mon	NFA	In Processing
WS4402	Hob Lane	30	0	25	0	243	0	8	-	3.3%	-	37.8	-	40	-		0
	<b>Total</b>		<b>0</b>	<b>25</b>		<b>243</b>	<b>0</b>	<b>8</b>	<b>-</b>	<b>3.3%</b>			<b>-</b>	<b>40</b>	<b>-</b>		<b>0</b>

### Langford Budville

Site Code	Site Location	Speed Limit	Sessions		Vehicles		Vehicles Above Threshold		% Above Threshold		Av Speed of speeders		Top Speed		Letters		
			Mon	Yr	Mon	Yr	Mon	Yr	Mon	Yr	Mon	Yr	Mon	Yr	Mon	NFA	In Processing
WS5101	Courtlands	30	0	5	0	100	0	1	-	1.0%	-	37.0	-	37	-		0
WS5102	Hillside	30	1	45	36	1,526	15	262	41.7%	17.2%	43.0	45.8	54	60	10	3	2
	<b>Total</b>		<b>1</b>	<b>50</b>	<b>36</b>	<b>1,626</b>	<b>15</b>	<b>263</b>	<b>41.7%</b>	<b>16.2%</b>			<b>54</b>	<b>60</b>	<b>10</b>	<b>3</b>	<b>2</b>

## Community SpeedWatch Monthly Report Sessions up to November 2020

Sessions Between 02/12/2019 to 30/11/2020

### Mark

Site Code	Site Location	Speed Limit	Sessions		Vehicles		Vehicles Above Threshold		% Above Threshold		Av Speed of speeders		Top Speed		Letters		
			Mon	Yr	Mon	Yr	Mon	Yr	Mon	Yr	Mon	Yr	Mon	Yr	Mon	NFA	In Processing
WS1501	B3139 (Traffic Island)	30	1	12	344	1,550	12	69	3.5%	4.5%	38.4	40.2	41	45	10	1	1
WS1502	Harnel	30	0	17	0	352	0	17	-	4.8%	-	40.3	-	47	-	-	0
WS1503	Laurel Farm	30	0	11	0	855	0	15	-	1.8%	-	37.0	-	41	-	-	0
WS1504	Mark First School	30	0	9	0	1,076	0	44	-	4.1%	-	41.2	-	47	-	-	0
WS1505	Over-the-Way	30	3	43	835	6,092	32	248	3.8%	4.1%	41.0	43.9	46	57	27	1	4
WS1507	Church Street	30	1	1	234	234	2	2	0.9%	0.9%	40.0	40.0	41	41	2	0	0
WS1508	Uplands	30	2	17	573	2,119	20	64	3.5%	3.0%	40.3	41.0	45	47	12	4	4
	<b>Total</b>		<b>7</b>	<b>110</b>	<b>1,986</b>	<b>12,278</b>	<b>66</b>	<b>459</b>	<b>3.3%</b>	<b>3.6%</b>			<b>46</b>	<b>57</b>	<b>51</b>	<b>6</b>	<b>9</b>

### Milverton

Site Code	Site Location	Speed Limit	Sessions		Vehicles		Vehicles Above Threshold		% Above Threshold		Av Speeders of speeders		Top Speed		Letters		
			Mon	Yr	Mon	Yr	Mon	Yr	Mon	Yr	Mon	Yr	Mon	Yr	Mon	NFA	In Processing
WS1602	Sand Street	20	0	44	0	2,739	0	142	-	5.2%	-	32.3	-	54	-	-	0
WS1604	Butts Way - Cricket field	20	0	29	0	420	0	20	-	4.8%	-	28.7	-	34	-	-	0
WS1605	Wood Street	20	1	49	103	1,305	13	117	12.6%	9.0%	31.6	32.5	39	39	9	2	2
WS1606	Station Road	20	0	63	0	3,713	0	159	-	4.3%	-	35.1	-	50	-	-	0
WS1607	Fore Street	20	0	6	0	568	0	3	-	0.5%	-	26.5	-	31	-	-	0
	<b>Total</b>		<b>1</b>	<b>191</b>	<b>103</b>	<b>8,745</b>	<b>13</b>	<b>441</b>	<b>12.6%</b>	<b>5.0%</b>			<b>39</b>	<b>54</b>	<b>9</b>	<b>2</b>	<b>2</b>

## Community SpeedWatch Monthly Report Sessions up to November 2020

Sessions Between 02/12/2019 to 30/11/2020

### Monkton Heathfield

Site Code	Site Location	Speed Limit	Sessions		Vehicles		Vehicles Above Threshold		% Above Threshold		Av Speed of speeders		Top Speed		Letters		
			Mon	Yr	Mon	Yr	Mon	Yr	Mon	Yr	Mon	Yr	Mon	Yr	Mon	NFA	In Processing
WS3401	A3259	30	0	16	0	2,582	0	93	-	3.6%	-	43.3	-	60	-		0
	<b>Total</b>		<b>0</b>	<b>16</b>		<b>2,582</b>	<b>0</b>	<b>93</b>	<b>-</b>	<b>3.6%</b>			<b>-</b>	<b>60</b>	<b>-</b>		<b>0</b>

### North Curry

Site Code	Site Location	Speed Limit	Sessions		Vehicles		Vehicles Above Threshold		% Above Threshold		Av Speed of speeders		Top Speed		Letters		
			Mon	Yr	Mon	Yr	Mon	Yr	Mon	Yr	Mon	Yr	Mon	Yr	Mon	NFA	In Processing
WS3301	Windmill Hill	30	0	9	0	112	0	6	-	5.4%	-	38.8	-	42	-		0
WS3302	A378	40	0	8	0	500	0	56	-	11.2%	-	54.4	-	63	-		0
WS3304	Stoke Road (Pury Street Farm)	30	0	3	0	140	0	8	-	5.7%	-	38.7	-	41	-		0
WS3305	Paynes Farm	30	0	6	0	134	0	4	-	3.0%	-	39.3	-	43	-		0
WS3306	Windmill Hill (Independent Baptist Church)	30	0	8	0	683	0	90	-	13.2%	-	44.0	-	52	-		0
	<b>Total</b>		<b>0</b>	<b>34</b>		<b>1,569</b>	<b>0</b>	<b>164</b>	<b>-</b>	<b>10.5%</b>			<b>-</b>	<b>63</b>	<b>-</b>		<b>0</b>

### Porlock

Site Code	Site Location	Speed Limit	Sessions		Vehicles		Vehicles Above Threshold		% Above Threshold		Av Speed of speeders		Top Speed		Letters		
			Mon	Yr	Mon	Yr	Mon	Yr	Mon	Yr	Mon	Yr	Mon	Yr	Mon	NFA	In Processing
WS5901	High Street	20	0	5	0	855	0	6	-	0.7%	-	27.3	-	30	-		0
	<b>Total</b>		<b>0</b>	<b>5</b>		<b>855</b>	<b>0</b>	<b>6</b>	<b>-</b>	<b>0.7%</b>			<b>-</b>	<b>30</b>	<b>-</b>		<b>0</b>

## Community SpeedWatch Monthly Report Sessions up to November 2020

Sessions Between 02/12/2019 to 30/11/2020

### Shipham

Site Code	Site Location	Speed Limit	Sessions		Vehicles		Vehicles Above Threshold		% Above Threshold		Av Speed of speeders		Top Speed		Letters		
			Mon	Yr	Mon	Yr	Mon	Yr	Mon	Yr	Mon	Yr	Mon	Yr	Mon	NFA	In Processing
WS1902	The Square	30	0	34	0	1,793	0	52	-	2.9%	-	41.1	-	50	-		0
WS1905	Turnpike Road (North Down Lane)	30	0	10	0	562	0	6	-	1.1%	-	38.2	-	41	-		0
	<b>Total</b>		<b>0</b>	<b>44</b>		<b>2,355</b>	<b>0</b>	<b>58</b>	<b>-</b>	<b>2.5%</b>			<b>-</b>	<b>50</b>	<b>-</b>		<b>0</b>

### Staplegrave

Site Code	Site Location	Speed Limit	Sessions		Vehicles		Vehicles Above Threshold		% Above Threshold		Av Speed of speeders		Top Speed		Letters		
			Mon	Yr	Mon	Yr	Mon	Yr	Mon	Yr	Mon	Yr	Mon	Yr	Mon	NFA	In Processing
WS2101	Manor Road	30	3	35	746	6,249	2	10	0.3%	0.2%	34.7	37.7	38	44	1	1	0
WS2102	Staplegrave Road	30	2	43	1,686	26,807	1	39	0.1%	0.1%	38.0	37.0	40	41	1	0	0
	<b>Total</b>		<b>5</b>	<b>78</b>	<b>2,432</b>	<b>33,056</b>	<b>3</b>	<b>49</b>	<b>0.1%</b>	<b>0.1%</b>			<b>40</b>	<b>44</b>	<b>2</b>	<b>1</b>	<b>0</b>

### Stogursey

Site Code	Site Location	Speed Limit	Sessions		Vehicles		Vehicles Above Threshold		% Above Threshold		Av Speed of speeders		Top Speed		Letters		
			Mon	Yr	Mon	Yr	Mon	Yr	Mon	Yr	Mon	Yr	Mon	Yr	Mon	NFA	In Processing
WS5202	Forge Corner (Burton)	30	0	10	0	749	0	40	-	5.3%	-	40.4	-	45	-		0
	<b>Total</b>		<b>0</b>	<b>10</b>		<b>749</b>	<b>0</b>	<b>40</b>	<b>-</b>	<b>5.3%</b>			<b>-</b>	<b>45</b>	<b>-</b>		<b>0</b>



## Community SpeedWatch Monthly Report Sessions up to November 2020

Sessions Between 02/12/2019 to 30/11/2020

### Stoke St Gregory

Site Code	Site Location	Speed Limit	Sessions		Vehicles		Vehicles Above Threshold		% Above Threshold		Av Speed of speeders		Top Speed		Letters		
			Mon	Yr	Mon	Yr	Mon	Yr	Mon	Yr	Mon	Yr	Mon	Yr	Mon	NFA	In Processing
WS6101	Griggs Hill (Baptist Church)	30	0	1	0	78	0	2	-	2.6%	-	31.5	-	32	-		0
WS6102	Stoke Road (Cuppins Farm)	40	0	5	0	558	0	11	-	2.0%	-	45.1	-	52	-		0
WS6103	Stoke Road (Thistle Down)	40	0	4	0	445	0	8	-	1.8%	-	44.8	-	50	-		0
<b>Total</b>			<b>0</b>	<b>10</b>		<b>1,081</b>	<b>0</b>	<b>21</b>	<b>-</b>	<b>1.9%</b>			<b>-</b>	<b>52</b>	<b>-</b>		<b>0</b>

### Trull

Site Code	Site Location	Speed Limit	Sessions		Vehicles		Vehicles Above Threshold		% Above Threshold		Av Speed of speeders		Top Speed		Letters		
			Mon	Yr	Mon	Yr	Mon	Yr	Mon	Yr	Mon	Yr	Mon	Yr	Mon	NFA	In Processing
WS3601	Honiton Road - Opp Furlong Green	30	0	2	0	325	0	13	-	4.0%	-	41.4	-	48	-		0
WS3603	Honiton Road (Car Garage)	30	0	1	0	409	0	1	-	0.2%	-	36.0	-	36	-		0
<b>Total</b>			<b>0</b>	<b>3</b>		<b>734</b>	<b>0</b>	<b>14</b>	<b>-</b>	<b>1.9%</b>			<b>-</b>	<b>48</b>	<b>-</b>		<b>0</b>

### Wellington Rural

Site Code	Site Location	Speed Limit	Sessions		Vehicles		Vehicles Above Threshold		% Above Threshold		Av Speed of speeders		Top Speed		Letters		
			Mon	Yr	Mon	Yr	Mon	Yr	Mon	Yr	Mon	Yr	Mon	Yr	Mon	NFA	In Processing
WS2801	Ford Street	30	0	30	0	1,288	0	209	-	16.2%	-	44.0	-	52	-		0
WS2802	Ford Street (Middle Ford Farm)	30	0	10	0	698	0	80	-	11.5%	-	42.9	-	53	-		0
<b>Total</b>			<b>0</b>	<b>40</b>		<b>1,986</b>	<b>0</b>	<b>289</b>	<b>-</b>	<b>14.5%</b>			<b>-</b>	<b>53</b>	<b>-</b>		<b>0</b>

## Community SpeedWatch Monthly Report Sessions up to November 2020

Sessions Between 02/12/2019 to 30/11/2020

### Wembdon

Site Code	Site Location	Speed Limit	Sessions		Vehicles		Vehicles Above Threshold		% Above Threshold		Av Speed of speeders		Top Speed		Letters		
			Mon	Yr	Mon	Yr	Mon	Yr	Mon	Yr	Mon	Yr	Mon	Yr	Mon	NFA	In Processing
WS2305	Wembdon Rise (Inwood Road)	30	0	5	0	552	0	6	-	1.1%	-	38.5	-	43	-		0
WS2306	Wembdon Hill (No. 89)	30	0	2	0	198	0	3	-	1.5%	-	39.5	-	43	-		0
WS2307	Wembdon Hill (no. 84)	30	0	4	0	325	0	8	-	2.5%	-	37.5	-	39	-		0
<b>Total</b>			<b>0</b>	<b>11</b>		<b>1,075</b>	<b>0</b>	<b>17</b>	<b>-</b>	<b>1.6%</b>			<b>-</b>	<b>43</b>	<b>-</b>		<b>0</b>

### Williton

Site Code	Site Location	Speed Limit	Sessions		Vehicles		Vehicles Above Threshold		% Above Threshold		Av Speed of speeders		Top Speed		Letters		
			Mon	Yr	Mon	Yr	Mon	Yr	Mon	Yr	Mon	Yr	Mon	Yr	Mon	NFA	In Processing
WS2502	Tower Hill	30	0	1	0	140	0	1	-	0.7%	-	38.0	-	38	-		0
WS2508	Tower Hill	30	0	1	0	215	0	1	-	0.5%	-	38.0	-	38	-		0
<b>Total</b>			<b>0</b>	<b>2</b>		<b>355</b>	<b>0</b>	<b>2</b>	<b>-</b>	<b>0.6%</b>			<b>-</b>	<b>38</b>	<b>-</b>		<b>0</b>

### Woolavington

Site Code	Site Location	Speed Limit	Sessions		Vehicles		Vehicles Above Threshold		% Above Threshold		Av Speed of speeders		Top Speed		Letters		
			Mon	Yr	Mon	Yr	Mon	Yr	Mon	Yr	Mon	Yr	Mon	Yr	Mon	NFA	In Processing
WS2701	Prince of Wales	30	0	14	0	575	0	7	-	1.2%	-	38.3	-	42	-		0
<b>Total</b>			<b>0</b>	<b>14</b>		<b>575</b>	<b>0</b>	<b>7</b>	<b>-</b>	<b>1.2%</b>			<b>-</b>	<b>42</b>	<b>-</b>		<b>0</b>

## Community SpeedWatch Monthly Report Sessions up to November 2020

### South Gloucestershire

Sessions Between 03/12/2019 to 30/11/2020

#### Chipping Sodbury East

Site Code	Site Location	Speed Limit	Sessions		Vehicles		Vehicles Above Threshold		% Above Threshold		Av Speed of speeders		Top Speed		Letters		
			Mon	Yr	Mon	Yr	Mon	Yr	Mon	Yr	Mon	Yr	Mon	Yr	Mon	NFA	In Processing
SG0202	St Johns Way - Lamp post 16	30	4	24	1,225	4,340	63	195	5.1%	4.5%	44.8	45.2	57	57	36	18	9
	<b>Total</b>		<b>4</b>	<b>24</b>	<b>1,225</b>	<b>4,340</b>	<b>63</b>	<b>195</b>	<b>5.1%</b>	<b>4.5%</b>			<b>57</b>	<b>57</b>	<b>36</b>	<b>18</b>	<b>9</b>

#### Codrington

Site Code	Site Location	Speed Limit	Sessions		Vehicles		Vehicles Above Threshold		% Above Threshold		Av Speed of speeders		Top Speed		Letters		
			Mon	Yr	Mon	Yr	Mon	Yr	Mon	Yr	Mon	Yr	Mon	Yr	Mon	NFA	In Processing
SG0501	B4465	40	0	24	0	3,080	0	268	-	8.7%	-	57.6	-	71	-		0
	<b>Total</b>		<b>0</b>	<b>24</b>		<b>3,080</b>	<b>0</b>	<b>268</b>	<b>-</b>	<b>8.7%</b>			<b>-</b>	<b>71</b>	<b>-</b>		<b>0</b>

#### Easter Compton

Site Code	Site Location	Speed Limit	Sessions		Vehicles		Vehicles Above Threshold		% Above Threshold		Av Speed of speeders		Top Speed		Letters		
			Mon	Yr	Mon	Yr	Mon	Yr	Mon	Yr	Mon	Yr	Mon	Yr	Mon	NFA	In Processing
SG0804	Main Road - Prospect Close	20	1	10	317	2,588	9	40	2.8%	1.5%	31.2	32.5	36	40	5	4	0
	<b>Total</b>		<b>1</b>	<b>10</b>	<b>317</b>	<b>2,588</b>	<b>9</b>	<b>40</b>	<b>2.8%</b>	<b>1.5%</b>			<b>36</b>	<b>40</b>	<b>5</b>	<b>4</b>	<b>0</b>

## Community SpeedWatch Monthly Report Sessions up to November 2020

### Staple Hill

Site Code	Site Location	Speed Limit	Sessions		Vehicles		Vehicles Above Threshold		% Above Threshold		Av Speed of speeders		Top Speed		Letters		
			Mon	Yr	Mon	Yr	Mon	Yr	Mon	Yr	Mon	Yr	Mon	Yr	Mon	NFA	In Processing
SG3101	Park Road	20	37	80	10,873	28,166	1,524	3,794	14.0%	13.5%	35.6	36.7	57	57	880	170	474
	<b>Total</b>		<b>37</b>	<b>80</b>	<b>10,873</b>	<b>28,166</b>	<b>1,524</b>	<b>3,794</b>	<b>14.0%</b>	<b>13.5%</b>			<b>57</b>	<b>57</b>	<b>880</b>	<b>170</b>	<b>474</b>

### Thornbury

Site Code	Site Location	Speed Limit	Sessions		Vehicles		Vehicles Above Threshold		% Above Threshold		Av Speed of speeders		Top Speed		Letters		
			Mon	Yr	Mon	Yr	Mon	Yr	Mon	Yr	Mon	Yr	Mon	Yr	Mon	NFA	In Processing
SG1604	Castle Street	20	0	46	0	5,357	0	434	-	8.1%	-	31.1	-	40	-		0
SG1605	Gloucester Road - Nos.28/30 The Elms	30	0	1	0	441	0	7	-	1.6%	-	38.3	-	41	-		0
SG1607	Gloucester Road - The Anchor	30	0	62	0	8,588	0	206	-	2.4%	-	42.6	-	51	-		0
SG1610	Pearce Close	30	0	30	0	5,227	0	144	-	2.8%	-	43.1	-	59	-		0
SG1611	Morton Way - Cheviot Dr & Cumbria Cl	40	0	13	0	1,475	0	53	-	3.6%	-	50.5	-	55	-		0
SG1612	Morton Way - Primrose Dr & Osprey Pk	40	0	7	0	772	0	23	-	3.0%	-	51.1	-	61	-		0
	<b>Total</b>		<b>0</b>	<b>159</b>		<b>21,860</b>	<b>0</b>	<b>867</b>	<b>-</b>	<b>3.9%</b>			<b>-</b>	<b>61</b>	<b>-</b>		<b>0</b>

### Tytherington

Site Code	Site Location	Speed Limit	Sessions		Vehicles		Vehicles Above Threshold		% Above Threshold		Av Speed of speeders		Top Speed		Letters		
			Mon	Yr	Mon	Yr	Mon	Yr	Mon	Yr	Mon	Yr	Mon	Yr	Mon	NFA	In Processing
SG2304	Stowell Hill Road	30	0	69	0	2,033	0	95	-	4.7%	-	42.2	-	50	-		0
	<b>Total</b>		<b>0</b>	<b>69</b>		<b>2,033</b>	<b>0</b>	<b>95</b>	<b>-</b>	<b>4.7%</b>			<b>-</b>	<b>50</b>	<b>-</b>		<b>0</b>

## Community SpeedWatch Monthly Report Sessions up to November 2020

### Wickwar

Site Code	Site Location	Speed Limit	Sessions		Vehicles		Vehicles Above Threshold		% Above Threshold		Av Speed of speeders		Top Speed		Letters		
			Mon	Yr	Mon	Yr	Mon	Yr	Mon	Yr	Mon	Yr	Mon	Yr	Mon	NFA	In Processing
SG1801	Station Road	30	0	3	0	253	0	11	-	4.3%	-	41.5	-	50	-		0
SG1803	Downs Road	30	3	49	851	8,301	81	455	9.5%	5.5%	41.6	43.3	47	51	60	8	13
SG1804	Sodbury Road - South Farm	30	2	33	645	7,036	26	179	4.0%	2.5%	43.0	40.9	50	50	21	4	1
SG1805	Sodbury Road - Youth Club	30	0	15	0	260	0	6	-	2.3%	-	38.0	-	39	-		0
	<b>Total</b>		<b>5</b>	<b>100</b>	<b>1,496</b>	<b>15,850</b>	<b>107</b>	<b>651</b>	<b>7.2%</b>	<b>4.1%</b>			<b>50</b>	<b>51</b>	<b>81</b>	<b>12</b>	<b>14</b>

### Winterbourne Down

Site Code	Site Location	Speed Limit	Sessions		Vehicles		Vehicles Above Threshold		% Above Threshold		Av Speed of speeders		Top Speed		Letters		
			Mon	Yr	Mon	Yr	Mon	Yr	Mon	Yr	Mon	Yr	Mon	Yr	Mon	NFA	In Processing
SG2803	Dragon Road - outside 139	30	8	52	1,726	4,388	45	161	2.6%	3.7%	40.2	44.8	45	65	38	5	2
	<b>Total</b>		<b>8</b>	<b>52</b>	<b>1,726</b>	<b>4,388</b>	<b>45</b>	<b>161</b>	<b>2.6%</b>	<b>3.7%</b>			<b>45</b>	<b>65</b>	<b>38</b>	<b>5</b>	<b>2</b>

### South Somerset

*Sessions Between 01/12/2019 to 30/11/2020*

### Aller

Site Code	Site Location	Speed Limit	Sessions		Vehicles		Vehicles Above Threshold		% Above Threshold		Av Speed of speeders		Top Speed		Letters		
			Mon	Yr	Mon	Yr	Mon	Yr	Mon	Yr	Mon	Yr	Mon	Yr	Mon	NFA	In Processing
SS0101	Sorn House	30	0	38	0	2,816	0	95	-	3.4%	-	44.7	-	64	-		0
	<b>Total</b>		<b>0</b>	<b>38</b>		<b>2,816</b>	<b>0</b>	<b>95</b>	<b>-</b>	<b>3.4%</b>			<b>-</b>	<b>64</b>	<b>-</b>		<b>0</b>

## Community SpeedWatch Monthly Report Sessions up to November 2020

Sessions Between 01/12/2019 to 30/11/2020

### Barton St David

Site Code	Site Location	Speed Limit	Sessions		Vehicles		Vehicles Above Threshold		% Above Threshold		Av Speed of speeders		Top Speed		Letters		
			Mon	Yr	Mon	Yr	Mon	Yr	Mon	Yr	Mon	Yr	Mon	Yr	Mon	NFA	In Processing
SS4101	Barton Road	30	0	8	0	959	0	88	-	9.2%	-	41.0	-	47	-		0
SS4102	High Lane	30	0	6	0	569	0	4	-	0.7%	-	32.3	-	39	-		0
	<b>Total</b>		<b>0</b>	<b>14</b>		<b>1,528</b>	<b>0</b>	<b>92</b>	<b>-</b>	<b>6.0%</b>			<b>-</b>	<b>47</b>	<b>-</b>		<b>0</b>

### Brympton

Site Code	Site Location	Speed Limit	Sessions		Vehicles		Vehicles Above Threshold		% Above Threshold		Av Speed of speeders		Top Speed		Letters		
			Mon	Yr	Mon	Yr	Mon	Yr	Mon	Yr	Mon	Yr	Mon	Yr	Mon	NFA	In Processing
SS0302	Bluebell Rd	30	0	6	0	392	0	9	-	2.3%	-	41.0	-	49	-		0
SS0303	Junc. Stourton Way/Long Mead	30	0	3	0	240	0	4	-	1.7%	-	37.5	-	39	-		0
SS0304	Larkhill Rd	30	0	8	0	251	0	2	-	0.8%	-	39.5	-	42	-		0
	<b>Total</b>		<b>0</b>	<b>17</b>		<b>883</b>	<b>0</b>	<b>15</b>	<b>-</b>	<b>1.7%</b>			<b>-</b>	<b>49</b>	<b>-</b>		<b>0</b>

## Community SpeedWatch Monthly Report Sessions up to November 2020

Sessions Between 01/12/2019 to 30/11/2020

### Charlton Horethorne

Site Code	Site Location	Speed Limit	Sessions		Vehicles		Vehicles Above Threshold		% Above Threshold		Av Speed of speeders		Top Speed		Letters		
			Mon	Yr	Mon	Yr	Mon	Yr	Mon	Yr	Mon	Yr	Mon	Yr	Mon	NFA	In Processing
SS0501	Cathill Lane	30	1	53	225	4,664	15	209	6.7%	4.5%	40.4	41.2	49	49	12	1	2
SS0507	Milbourne Port Road (40mph)	40	0	11	0	153	0	3	-	2.0%	-	49.3	-	53	-		0
SS0508	Milbourne Port Road (30 mph)	30	0	12	0	287	0	4	-	1.4%	-	36.8	-	42	-		0
<b>Total</b>			<b>1</b>	<b>76</b>	<b>225</b>	<b>5,104</b>	<b>15</b>	<b>216</b>	<b>6.7%</b>	<b>4.2%</b>			<b>49</b>	<b>53</b>	<b>12</b>	<b>1</b>	<b>2</b>

### Charlton Mackrell

Site Code	Site Location	Speed Limit	Sessions		Vehicles		Vehicles Above Threshold		% Above Threshold		Av Speed of speeders		Top Speed		Letters		
			Mon	Yr	Mon	Yr	Mon	Yr	Mon	Yr	Mon	Yr	Mon	Yr	Mon	NFA	In Processing
SS0401	Kingweston Rd - "Wymbra"	30	0	10	0	859	0	40	-	4.7%	-	42.0	-	49	-		0
<b>Total</b>			<b>0</b>	<b>10</b>		<b>859</b>	<b>0</b>	<b>40</b>	<b>-</b>	<b>4.7%</b>			<b>-</b>	<b>49</b>	<b>-</b>		<b>0</b>

## Community SpeedWatch Monthly Report Sessions up to November 2020

Sessions Between 01/12/2019 to 30/11/2020

### Curry Rivel

Site Code	Site Location	Speed Limit	Sessions		Vehicles		Vehicles Above Threshold		% Above Threshold		Av Speed of speeders		Top Speed		Letters		
			Mon	Yr	Mon	Yr	Mon	Yr	Mon	Yr	Mon	Yr	Mon	Yr	Mon	NFA	In Processing
SS0801	Churchway	30	0	12	0	844	0	2	-	0.2%	-	35.3	-	39	-		0
SS0803	Lower Wiltown	30	0	1	0	197	0	9	-	4.6%	-	39.0	-	43	-		0
SS0805	Honeylands - Junction with Abbey Close	30	0	4	0	155	0	2	-	1.3%	-	34.3	-	37	-		0
SS0806	A378	30	0	22	0	2,129	0	8	-	0.4%	-	36.8	-	39	-		0
SS0809	A378 (Stanchester House)	40	0	2	0	530	0	8	-	1.5%	-	48.5	-	50	-		0
SS0811	A378 Entr. to Westfield Ln	30	0	6	0	406	0	26	-	6.4%	-	41.7	-	49	-		0
SS0812	A378 Ent to Westfield Ln Eastbound	40	0	6	0	339	0	17	-	5.0%	-	51.3	-	61	-		0
SS0813	B3168 'Tuggs Cottage' Lower Wiltown	40	0	6	0	435	0	15	-	3.4%	-	51.0	-	58	-		0
SS0814	Parsonage Place	30	1	17	218	3,138	3	23	1.4%	0.7%	35.3	37.3	39	41	2	1	0
SS0815	Townsend	30	1	16	277	2,533	5	39	1.8%	1.5%	38.8	38.8	41	42	4	1	0
SS0817	A378 (Southways)	40	0	9	0	1,106	0	19	-	1.7%	-	49.4	-	53	-		0
	<b>Total</b>		<b>2</b>	<b>101</b>	<b>495</b>	<b>11,812</b>	<b>8</b>	<b>168</b>	<b>1.6%</b>	<b>1.4%</b>			<b>41</b>	<b>61</b>	<b>6</b>	<b>2</b>	<b>0</b>

### East Chinnock

Site Code	Site Location	Speed Limit	Sessions		Vehicles		Vehicles Above Threshold		% Above Threshold		Av Speed of speeders		Top Speed		Letters		
			Mon	Yr	Mon	Yr	Mon	Yr	Mon	Yr	Mon	Yr	Mon	Yr	Mon	NFA	In Processing
SS3301	A30 - Village Hall	30	0	108	0	24,821	0	78	-	0.3%	-	41.7	-	55	-		0
	<b>Total</b>		<b>0</b>	<b>108</b>		<b>24,821</b>	<b>0</b>	<b>78</b>	<b>-</b>	<b>0.3%</b>			<b>-</b>	<b>55</b>	<b>-</b>		<b>0</b>



## Community SpeedWatch Monthly Report Sessions up to November 2020

Sessions Between 01/12/2019 to 30/11/2020

### Haselbury Plucknett

Site Code	Site Location	Speed Limit	Sessions		Vehicles		Vehicles Above Threshold		% Above Threshold		Av Speed of speeders		Top Speed		Letters		
			Mon	Yr	Mon	Yr	Mon	Yr	Mon	Yr	Mon	Yr	Mon	Yr	Mon	NFA	In Processing
SS0904	A3066 North St - Ent. to Leaze Farm	20	0	11	0	148	0	3	-	2.0%	-	29.0	-	31	-		0
SS0906	North Street	20	0	100	0	3,805	0	282	-	7.4%	-	35.7	-	48	-		0
SS0911	Swan Hill	20	0	2	0	224	0	6	-	2.7%	-	28.0	-	29	-		0
	<b>Total</b>		<b>0</b>	<b>113</b>		<b>4,177</b>	<b>0</b>	<b>291</b>	<b>-</b>	<b>6.9%</b>			<b>-</b>	<b>48</b>	<b>-</b>		<b>0</b>

### Huish Episcopi

Site Code	Site Location	Speed Limit	Sessions		Vehicles		Vehicles Above Threshold		% Above Threshold		Av Speed of speeders		Top Speed		Letters		
			Mon	Yr	Mon	Yr	Mon	Yr	Mon	Yr	Mon	Yr	Mon	Yr	Mon	NFA	In Processing
SS3701	A372 (Field Road)	30	0	13	0	2,386	0	66	-	2.8%	-	41.5	-	54	-		0
SS3702	A372 (opposite Rose & Crown)	30	0	19	0	1,749	0	30	-	1.7%	-	39.1	-	46	-		0
SS3703	A372 - Ducks Hill	40	0	3	0	110	0	0	-	0.0%	-	40.0	-	40	-		0
SS3705	A372 - Swallow Hill	30	0	26	0	4,639	0	121	-	2.6%	-	42.5	-	55	-		0
SS3706	The Hill	30	0	5	0	311	0	2	-	0.6%	-	34.7	-	38	-		0
SS3707	A378 (Somerton Road)	30	0	15	0	4,319	0	51	-	1.2%	-	40.7	-	49	-		0
SS3708	B3153 (Picts Hill)	30	0	9	0	2,426	0	98	-	4.0%	-	42.0	-	49	-		0
SS3709	A378 (Bow Wharfe)	20	0	3	0	1,692	0	49	-	2.9%	-	29.0	-	35	-		0
SS3710	A378 (North Street)	20	0	2	0	963	0	23	-	2.4%	-	28.7	-	32	-		0
	<b>Total</b>		<b>0</b>	<b>95</b>		<b>18,595</b>	<b>0</b>	<b>440</b>	<b>-</b>	<b>2.4%</b>			<b>-</b>	<b>55</b>	<b>-</b>		<b>0</b>

## Community SpeedWatch Monthly Report Sessions up to November 2020

Sessions Between 01/12/2019 to 30/11/2020

### Long Load

Site Code	Site Location	Speed Limit	Sessions		Vehicles		Vehicles Above Threshold		% Above Threshold		Av Speed of speeders		Top Speed		Letters		
			Mon	Yr	Mon	Yr	Mon	Yr	Mon	Yr	Mon	Yr	Mon	Yr	Mon	NFA	In Processing
SS1302	B3165 - Crabtree Mead	30	0	16	0	562	0	9	-	1.6%	-	37.0	-	38	-		0
SS1303	B3165	30	0	24	0	825	0	6	-	0.7%	-	37.0	-	38	-		0
	<b>Total</b>		<b>0</b>	<b>40</b>		<b>1,387</b>	<b>0</b>	<b>15</b>	<b>-</b>	<b>1.1%</b>			<b>-</b>	<b>38</b>	<b>-</b>		<b>0</b>

### Misterton

Site Code	Site Location	Speed Limit	Sessions		Vehicles		Vehicles Above Threshold		% Above Threshold		Av Speed of speeders		Top Speed		Letters		
			Mon	Yr	Mon	Yr	Mon	Yr	Mon	Yr	Mon	Yr	Mon	Yr	Mon	NFA	In Processing
SS1703	A356 Middle St - Opp Misterton School	20	0	1	0	408	0	15	-	3.7%	-	30.1	-	40	-		0
	<b>Total</b>		<b>0</b>	<b>1</b>		<b>408</b>	<b>0</b>	<b>15</b>	<b>-</b>	<b>3.7%</b>			<b>-</b>	<b>40</b>	<b>-</b>		<b>0</b>

### North Cadbury & Galhampt

Site Code	Site Location	Speed Limit	Sessions		Vehicles		Vehicles Above Threshold		% Above Threshold		Av Speed of speeders		Top Speed		Letters		
			Mon	Yr	Mon	Yr	Mon	Yr	Mon	Yr	Mon	Yr	Mon	Yr	Mon	NFA	In Processing
SS3802	A359 (Galhampton)	40	5	14	1,373	2,726	20	51	1.5%	1.9%	51.6	52.8	57	60	6	10	4
SS3803	A359 (Galhampton)	40	1	3	305	742	9	13	3.0%	1.8%	49.4	51.4	52	60	7	2	0
	<b>Total</b>		<b>6</b>	<b>17</b>	<b>1,678</b>	<b>3,468</b>	<b>29</b>	<b>64</b>	<b>1.7%</b>	<b>1.8%</b>			<b>57</b>	<b>60</b>	<b>13</b>	<b>12</b>	<b>4</b>

## Community SpeedWatch Monthly Report Sessions up to November 2020

Sessions Between 01/12/2019 to 30/11/2020

### North Cheriton

Site Code	Site Location	Speed Limit	Sessions		Vehicles		Vehicles Above Threshold		% Above Threshold		Av Speed of speeders		Top Speed		Letters		
			Mon	Yr	Mon	Yr	Mon	Yr	Mon	Yr	Mon	Yr	Mon	Yr	Mon	NFA	In Processing
SS2001	Outside Cheriton Hill House	30	0	5	0	99	0	23	-	23.2%	-	41.2	-	47	-		0
	<b>Total</b>		<b>0</b>	<b>5</b>		<b>99</b>	<b>0</b>	<b>23</b>	<b>-</b>	<b>23.2%</b>			<b>-</b>	<b>47</b>	<b>-</b>		<b>0</b>

### North Perrott

Site Code	Site Location	Speed Limit	Sessions		Vehicles		Vehicles Above Threshold		% Above Threshold		Av Speed of speeders		Top Speed		Letters		
			Mon	Yr	Mon	Yr	Mon	Yr	Mon	Yr	Mon	Yr	Mon	Yr	Mon	NFA	In Processing
SS2101	New St Opp Manor Arms pub	30	1	7	185	636	1	4	0.5%	0.6%	36.0	36.4	36	41	-	0	1
SS2102	A3066 Junc New St/Back Lane	30	1	11	130	976	2	22	1.5%	2.3%	37.5	39.1	39	46	2	0	0
SS2103	New St Opp Manor Farm House	30	0	12	0	360	0	9	-	2.5%	-	39.8	-	44	-		0
	<b>Total</b>		<b>2</b>	<b>30</b>	<b>315</b>	<b>1,972</b>	<b>3</b>	<b>35</b>	<b>1.0%</b>	<b>1.8%</b>			<b>39</b>	<b>46</b>	<b>2</b>	<b>0</b>	<b>1</b>

### Puckington

Site Code	Site Location	Speed Limit	Sessions		Vehicles		Vehicles Above Threshold		% Above Threshold		Av Speed of speeders		Top Speed		Letters		
			Mon	Yr	Mon	Yr	Mon	Yr	Mon	Yr	Mon	Yr	Mon	Yr	Mon	NFA	In Processing
SS3201	B3168 - Junction with entrance to Church	30	3	38	414	2,882	18	104	4.3%	3.6%	39.8	39.9	45	51	15	2	1
SS3202	B3168 - Junction with Bradon Lane	30	0	33	0	1,635	0	26	-	1.6%	-	37.3	-	41	-		0
	<b>Total</b>		<b>3</b>	<b>71</b>	<b>414</b>	<b>4,517</b>	<b>18</b>	<b>130</b>	<b>4.3%</b>	<b>2.9%</b>			<b>45</b>	<b>51</b>	<b>15</b>	<b>2</b>	<b>1</b>

## Community SpeedWatch Monthly Report Sessions up to November 2020

Sessions Between 01/12/2019 to 30/11/2020

### Somerton

Site Code	Site Location	Speed Limit	Sessions		Vehicles		Vehicles Above Threshold		% Above Threshold		Av Speed of speeders		Top Speed		Letters		
			Mon	Yr	Mon	Yr	Mon	Yr	Mon	Yr	Mon	Yr	Mon	Yr	Mon	NFA	In Processing
SS3901	Sutton Road (The Old Shoemaker)	20	0	20	0	749	0	69	-	9.2%	-	30.1	-	36	-		0
SS3902	Sutton Road (Tom Tits Lane)	20	11	97	1,324	7,720	101	545	7.6%	7.1%	30.5	31.8	44	44	53	6	42
SS3903	Sutton Road (Coval)	20	4	35	598	2,959	52	353	8.7%	11.9%	31.0	31.6	36	40	26	1	25
SS3904	Langport Road (No. 1 Pavement)	20	7	58	1,777	11,840	69	644	3.9%	5.4%	28.8	31.9	33	42	41	3	25
SS3905	B3153 (Berry Hehind)	30	0	3	0	527	0	0	-	0.0%	-	30.0	-	30	-		0
SS3906	Etsome Terrace	30	0	1	0	71	0	1	-	1.4%	-	25.0	-	25	-		0
SS3907	Langport Road (Westholm Road)	30	2	17	637	6,070	1	113	0.2%	1.9%	34.0	41.7	38	62	1	0	0
SS3908	Gassons Lane	20	1	24	89	2,256	3	120	3.4%	5.3%	29.0	30.2	33	37	1	1	1
SS3909	Langport Road (B3153)	30	0	8	0	2,099	0	27	-	1.3%	-	40.3	-	49	-		0
SS3910	Cartway Lane	30	0	1	0	386	0	20	-	5.2%	-	39.6	-	50	-		0
SS3911	B3153 (Behind Berry/Little Lynch)	30	0	3	0	1,409	0	5	-	0.4%	-	37.5	-	42	-		0
	<b>Total</b>		<b>25</b>	<b>267</b>	<b>4,425</b>	<b>36,086</b>	<b>215</b>	<b>1,897</b>	<b>4.9%</b>	<b>4.8%</b>			<b>44</b>	<b>62</b>	<b>122</b>	<b>11</b>	<b>93</b>

### Wearne

Site Code	Site Location	Speed Limit	Sessions		Vehicles		Vehicles Above Threshold		% Above Threshold		Av Speed of speeders		Top Speed		Letters		
			Mon	Yr	Mon	Yr	Mon	Yr	Mon	Yr	Mon	Yr	Mon	Yr	Mon	NFA	In Processing
SS3601	The Croft	30	0	50	0	1,790	0	53	-	3.0%	-	41.7	-	57	-		0
SS3603	White Hill (Wearne Farm)	30	0	10	0	163	0	0	-	0.0%	-	30.0	-	30	-		0
SS3604	White Hill (Woodpeckers)	30	0	15	0	35	0	2	-	5.7%	-	39.0	-	42	-		0
	<b>Total</b>		<b>0</b>	<b>75</b>		<b>1,988</b>	<b>0</b>	<b>55</b>	<b>-</b>	<b>2.8%</b>			<b>-</b>	<b>57</b>	<b>-</b>		<b>0</b>

## Community SpeedWatch Monthly Report Sessions up to November 2020

Sessions Between 01/12/2019 to 30/11/2020

### West Coker

Site Code	Site Location	Speed Limit	Sessions		Vehicles		Vehicles Above Threshold		% Above Threshold		Av Speed of speeders		Top Speed		Letters		
			Mon	Yr	Mon	Yr	Mon	Yr	Mon	Yr	Mon	Yr	Mon	Yr	Mon	NFA	In Processing
SS3501	High Street (A30 - no.42)	20	1	31	897	4,081	14	152	1.6%	3.7%	27.0	30.5	29	37	-	0	14
SS3502	High Stret (A30 - Long Orchard)	20	0	43	0	6,136	0	207	-	3.4%	-	29.8	-	36	-		0
SS3504	East Street	20	0	6	0	110	0	6	-	5.5%	-	27.7	-	30	-		0
SS3505	A30 High Street (Manor Farm)	20	3	51	645	5,996	40	363	6.2%	6.1%	31.0	32.1	37	40	19	4	17
SS3506	A30 High Street (Churlands Close)	20	0	7	0	715	0	15	-	2.1%	-	31.5	-	37	-		0
	<b>Total</b>		<b>4</b>	<b>138</b>	<b>1,542</b>	<b>17,038</b>	<b>54</b>	<b>743</b>	<b>3.5%</b>	<b>4.3%</b>			<b>37</b>	<b>40</b>	<b>19</b>	<b>4</b>	<b>31</b>